

Results of the Annual Revision for FY2004 and the 2000 Benchmark Revision of GDP (expenditure series)*

December 2, 2005
Department of National Accounts
Economic and Social Research Institute
Cabinet Office

1. Annual Revision for FY2004

The preliminary quarterly GDP estimates for FY2004 have been revised; they now reflect the incorporation of newly available annual source data (see Note). GDP for FY2003 were also re-calculated using newly available source data.

Note: Major annual source data: “Census of Manufactures,” “Annual Report of the Financial Statements Statistics of Corporations by Industry,” financial statements of the state and independent administrative institutions, among others.

2. 2000 Benchmark Revision

Every five years, the framework of Japan’s national accounts is rebuilt when basic source data such as the “Input-Output Tables” and the “Population Census” become available. And some compilation methods are improved, and concepts and accounts are broadly updated.

In the 2000 benchmark revision, benchmark nominal estimates for 2000 were calculated on the basis of the “2000 Input-Output Tables” and other statistics. The 2000 benchmark revision also incorporated other source data that had not yet been utilized in the annual revision thus far and retroactively revised source data (such as the “2003 Housing and Land Survey”). As a result, figures for 1994 and thereafter (from 1996 for compensation of employees) were re-calculated.

Note: The reference year—the year when deflators are 100—was moved from 1995 to 2000 in December 2004, when the chain-linking method was introduced in advance of the 2000 benchmark revision.

3. Release Schedule of Other Results of the Annual and the Benchmark Revisions

Those other than expenditure series will be disseminated in succession from the end of this year to the beginning of next year. For more information on the release schedule, please see page 13.

* The annual revision for FY2004 has been conducted, based on the results of the 2000 benchmark revision.

I. 平成16年度確報(国内総支出系列等)のポイント

Outlines of the annual revision of GDP for 2004FY

1. 速報値と確報値の比較(実質GDP成長率)

Comparison of the preliminary and the revised estimates (real GDP growth rate)

(平成12暦年連鎖価格、単位:%)

(Chained (2000) yen, %)

	平成15年度(2003FY)		平成16年度(2004FY)				
	前年度比 ※1		前年度比 ※1		寄与度(対GDP) ※2		
	速報値 ※3 Preliminary	確報値 Revised	速報値 ※3 Preliminary	確報値 Revised	速報値 ※3 Preliminary	確報値 Revised	
国内総生産(GDP)	2.0	2.3	1.9	1.7	***	***	GROSS DOMESTIC PRODUCT
国内需要	1.2	1.5	1.4	1.3	1.4	1.3	DOMESTIC DEMAND
民間需要	2.1	2.1	2.3	2.1	1.8	1.6	PRIVATE DEMAND
民間最終消費支出	0.5	0.8	1.2	1.7	0.7	1.0	PRIVATE CONSUMPTION
家計最終消費支出	0.5	0.7	1.2	1.7	0.7	1.0	CONSUMPTION OF HOUSEHOLDS
除く持ち家の帰属家賃	0.2	0.4	1.2	1.6	0.5	0.8	EXCLUDING IMPUTED RENT
民間住宅	-0.3	-0.0	2.1	1.7	0.1	0.1	PRIVATE RESIDENTIAL INVESTMENT
民間企業設備	8.3	7.0	5.1	5.4	0.8	0.8	PRIVATE NON-RESL. INVESTMENT
民間在庫品増加	***	***	***	***	0.2	-0.3	PRIVATE INVENTORY
公的需要	-1.4	-0.5	-1.4	-1.4	-0.3	-0.3	PUBLIC DEMAND
政府最終消費支出	1.2	2.5	2.7	1.8	0.5	0.3	GOVERNMENT CONSUMPTION
公的固定資本形成	-9.0	-9.5	-15.1	-12.4	-0.8	-0.7	PUBLIC INVESTMENT
公的在庫品増加	***	***	***	***	0.0	0.0	PUBLIC INVENTORY
(再掲)総固定資本形成	2.7	1.5	0.1	0.5	0.0	0.1	(regrouped)GROSS DOMESTIC FIXED CAPITAL FORMATION
財貨・サービスの純輸出	***	***	***	***	0.5	0.5	NET EXPORTS OF GOODS & SERVICES
財貨・サービスの輸出	10.0	9.7	11.9	11.4	1.4	1.4	EXPORTS OF GOODS & SERVICES
財貨・サービスの輸入(控除)	3.1	3.2	9.4	8.7	-1.0	-0.9	less : IMPORTS OF GOODS & SERVICES

※1: Changes from the previous year

※2: Contributions to changes in GDP

※3: 平成17年7-9月期四半期別GDP1次速報

Quarterly estimates of GDP for July-September 2005 (1st Preliminary)

(参考)

(Reference)

GDPデフレーター	-1.2	-1.2	-1.1	-1.2	***	***	GDP DEFLATOR
-----------	------	------	------	------	-----	-----	--------------

2. 速報値と確報値の比較(名目GDP成長率)

Comparison of the preliminary and the revised estimates (nominal GDP growth rate)

(単位:%)

	平成15年度(2003FY)		平成16年度(2004FY)				
	前年度比 ※1		前年度比 ※1		寄与度(対GDP) ※2		
	速報値 ※3 Preliminary	確報値 Revised	速報値 ※3 Preliminary	確報値 Revised	速報値 ※3 Preliminary	確報値 Revised	
国内総生産(GDP)	0.8	1.0	0.8	0.5	***	***	GROSS DOMESTIC PRODUCT
国内需要	0.2	0.4	0.8	0.6	0.8	0.6	DOMESTIC DEMAND
民間需要	0.9	1.0	1.7	1.4	1.2	1.0	PRIVATE DEMAND
民間最終消費支出	-0.2	-0.1	0.7	1.0	0.4	0.6	PRIVATE CONSUMPTION
家計最終消費支出	-0.2	-0.2	0.8	1.0	0.4	0.6	CONSUMPTION OF HOUSEHOLDS
除く持ち家の帰属家賃	-0.7	-0.5	0.6	1.1	0.3	0.5	EXCLUDING IMPUTED RENT
民間住宅	-0.4	0.0	2.6	2.3	0.1	0.1	PRIVATE RESIDENTIAL INVESTMENT
民間企業設備	5.4	4.4	3.8	4.4	0.6	0.6	PRIVATE NON-RESI. INVESTMENT
民間在庫品増加	***	***	***	***	0.2	-0.3	PRIVATE INVENTORY
公的需要	-2.0	-1.6	-1.9	-1.9	-0.4	-0.4	PUBLIC DEMAND
政府最終消費支出	0.5	1.0	1.7	0.9	0.3	0.2	GOVERNMENT CONSUMPTION
公的固定資本形成	-9.3	-9.3	-14.5	-11.4	-0.8	-0.6	PUBLIC INVESTMENT
公的在庫品増加	***	***	***	***	0.0	0.0	PUBLIC INVENTORY
(再掲)総固定資本形成	0.8	0.1	-0.5	0.3	-0.1	0.1	(regrouped)GROSS DOMESTIC FIXED CAPITAL FORMATION
財貨・サービスの純輸出	***	***	***	***	-0.1	-0.1	NET EXPORTS OF GOODS & SERVICES
財貨・サービスの輸出	6.5	6.5	11.0	11.0	1.3	1.4	EXPORTS OF GOODS & SERVICES
財貨・サービスの輸入(控除)	1.4	1.4	13.5	13.5	-1.4	-1.4	less : IMPORTS OF GOODS & SERVICES

※1: Changes from the previous year

※2: Contributions to changes in GDP

※3: 平成17年7-9月期四半期別GDP1次速報

Quarterly estimates of GDP for July-September 2005 (1st Preliminary)

(参考)

(Reference)

雇業者報酬:名目	-1.0	-1.9	-0.1	-0.3	***	***	COMPENSATION OF EMPLOYEES(nominal)
----------	------	------	------	------	-----	-----	------------------------------------

Ⅱ. 平成12年基準改定(国内総支出系列)のポイント

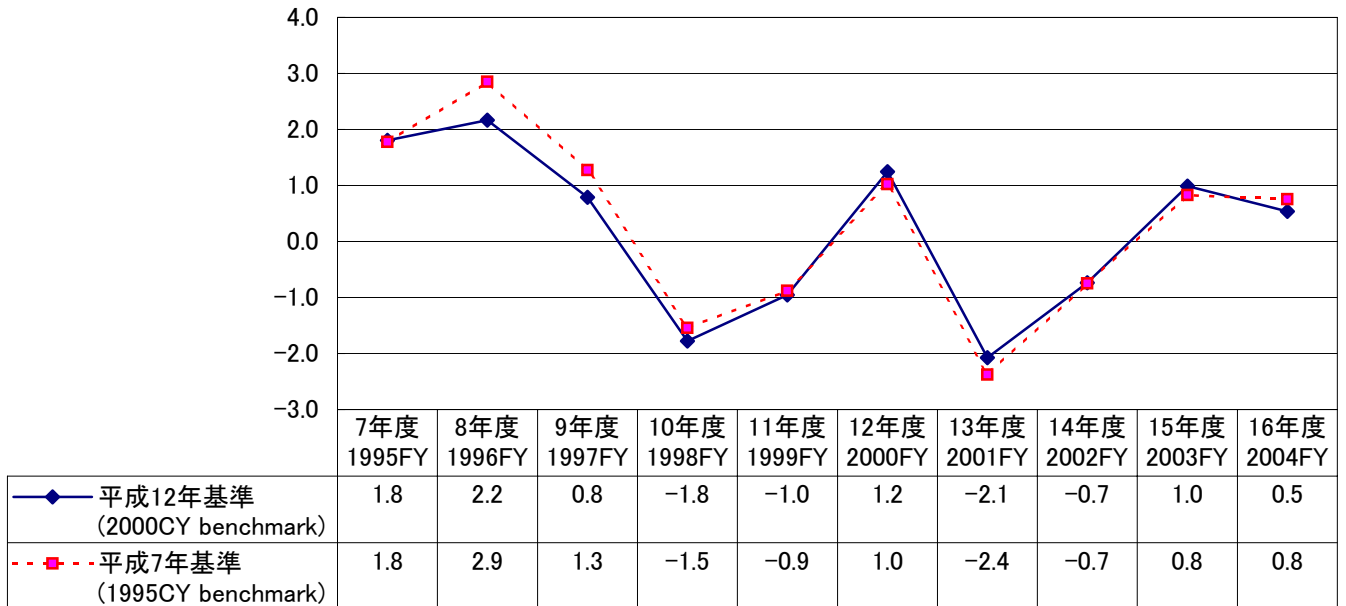
Outlines of the 2000 benchmark revision of GDP

1. 名目GDP成長率の改定状況

Revisions to nominal GDP growth rates

(前年度比、単位：%)

(Changes from the previous year, %)

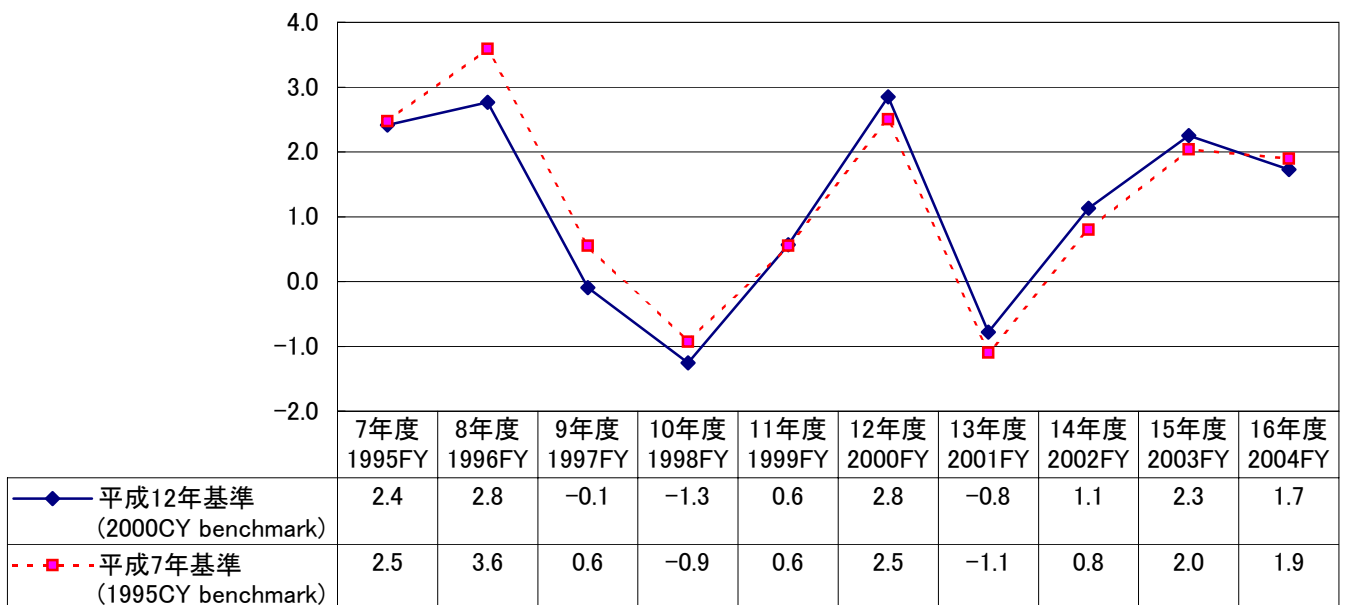


2-1. 実質GDP成長率の改定状況

Revisions to real GDP growth rates

(前年度比、単位：%)

(Changes from the previous year, %)



2-2. 実質GDP及び各需要項目の伸び率の改定状況

Revisions to growth rates of real GDP and its components

(前年度比、単位：%)

(Changes from the previous year, %)

年度(平成) Fiscal Year		7年 1995	8年 1996	9年 1997	10年 1998	11年 1999	12年 2000	13年 2001	14年 2002	15年 2003	16年 2004	
国内総生産(GDP)	新	2.4	2.8	-0.1	-1.3	0.6	2.8	-0.8	1.1	2.3	1.7	GROSS DOMESTIC PRODUCT
	旧	2.5	3.6	0.6	-0.9	0.6	2.5	-1.1	0.8	2.0	1.9	
	差	-0.1	-0.8	-0.6	-0.3	0.0	0.3	0.3	0.3	0.2	-0.2	
民間最終消費支出	新	2.4	2.5	-1.0	0.3	1.2	0.9	1.2	1.3	0.8	1.7	PRIVATE CONSUMPTION
	旧	2.4	2.6	-0.9	0.6	0.1	0.5	0.8	0.7	0.5	1.2	
	差	0.0	-0.1	-0.1	-0.3	1.1	0.4	0.3	0.6	0.3	0.5	
民間住宅	新	-5.6	13.3	-18.9	-10.5	3.5	0.0	-7.7	-2.2	-0.0	1.7	PRIVATE RESIDENTIAL
	旧	-5.5	13.4	-18.9	-10.7	3.7	-0.3	-7.9	-2.3	-0.3	2.1	
	差	-0.1	-0.1	-0.0	0.2	-0.1	0.4	0.1	0.1	0.3	-0.4	
民間企業設備	新	3.1	5.3	3.3	-7.2	-0.5	7.2	-2.3	-2.6	7.0	5.4	PRIVATE NON-RESI. INVESTMENT
	旧	3.3	9.2	7.6	-5.0	-0.8	8.8	-3.4	-3.7	8.3	5.1	
	差	-0.1	-3.9	-4.3	-2.2	0.4	-1.5	1.1	1.2	-1.3	0.3	
政府最終消費支出	新	4.1	2.2	0.9	2.6	4.1	4.2	2.9	2.1	2.5	1.8	GOVERNMENT CONSUMPTION
	旧	4.1	2.6	1.1	3.0	4.8	4.7	2.8	2.4	1.2	2.7	
	差	-0.1	-0.4	-0.2	-0.4	-0.7	-0.6	0.1	-0.3	1.3	-0.9	
公的固定資本形成	新	7.5	-2.7	-6.2	1.6	-0.5	-7.7	-5.0	-5.3	-9.5	-12.4	PUBLIC INVESTMENT
	旧	8.0	-2.9	-5.9	2.1	-0.9	-8.1	-5.1	-5.1	-9.0	-15.1	
	差	-0.5	0.3	-0.3	-0.4	0.3	0.4	0.1	-0.2	-0.5	2.7	
財貨・サービスの輸出	新	4.6	7.7	8.9	-3.7	5.5	9.2	-7.7	11.4	9.7	11.4	EXPORTS OF GOODS & SERVICES
	旧	4.6	7.7	8.9	-3.7	5.5	9.3	-7.1	11.0	10.0	11.9	
	差	-0.0	-0.0	-0.0	0.0	-0.0	-0.1	-0.6	0.4	-0.3	-0.5	
財貨・サービスの輸入 (控除)	新	15.1	10.3	-2.0	-6.5	6.3	9.4	-3.1	4.7	3.2	8.7	less : IMPORTS OF GOODS & SERVICES
	旧	15.1	10.1	-1.9	-6.5	6.6	8.2	-3.9	5.0	3.1	9.4	
	差	0.0	0.2	-0.0	0.0	-0.3	1.2	0.8	-0.3	0.0	-0.6	

※： 各項目の上段(新)は平成12年基準、中段(旧)は平成7年基準の計数を示す。

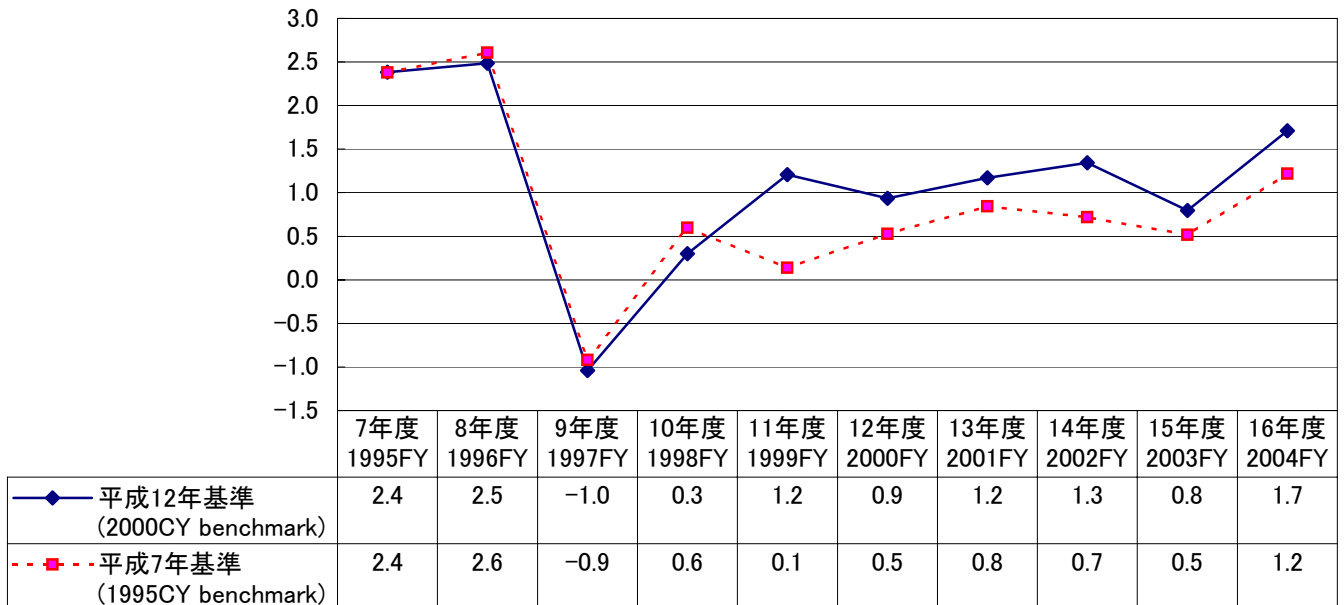
For each component, the first lines are 2000CY benchmark figures, the second lines are 1995CY benchmark figures. and the third lines are differences between them.

実質民間最終消費支出の伸び率の改定状況

Revisions to growth rates of real private consumption

(前年度比、単位：%)

(Changes from the previous year, %)

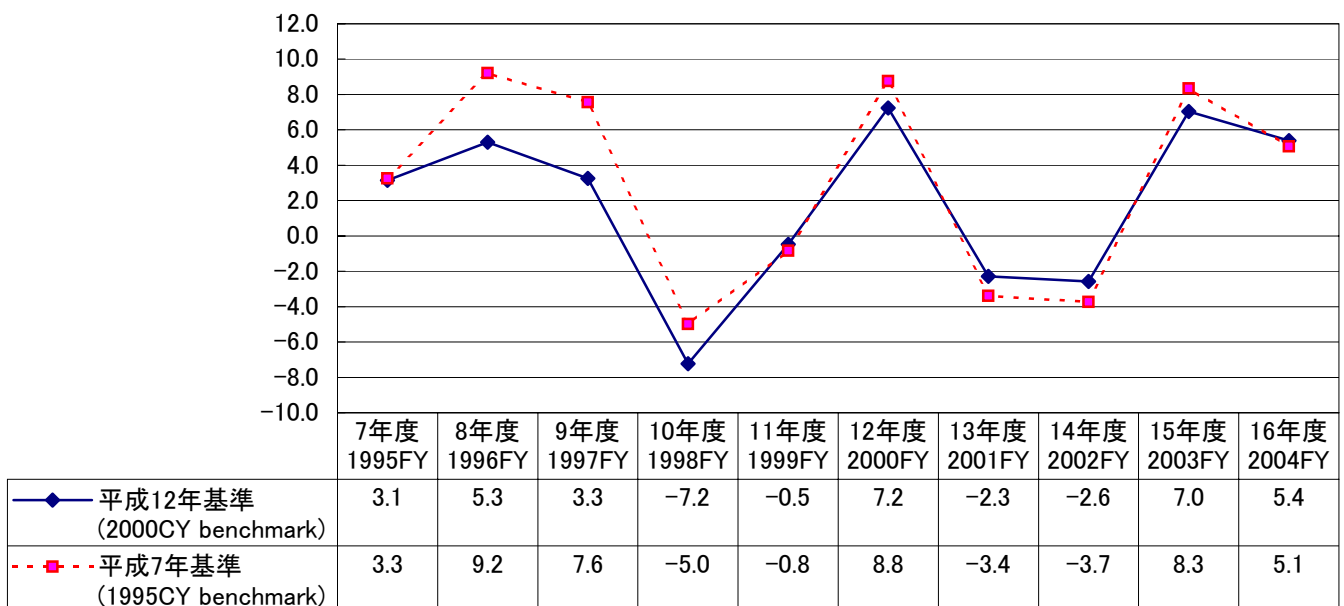


実質民間企業設備の伸び率の改定状況

Revisions to growth rates of real private non-residential investment

(前年度比、単位：%)

(Changes from the previous year, %)



2-3. 実質GDP成長率に対する需要項目別寄与度の改定状況

Revisions to contributions to real GDP growth (by component of expenditures)

(前年度比、単位：%)

(Changes from the previous year, %)

年度(平成) Fiscal Year	7年 1995	8年 1996	9年 1997	10年 1998	11年 1999	12年 2000	13年 2001	14年 2002	15年 2003	16年 2004	
民間最終消費支出 新 旧 差	1.3 1.3 -0.0	1.4 1.4 -0.1	-0.6 -0.5 -0.1	0.2 0.3 -0.2	0.7 0.1 0.6	0.5 0.3 0.2	0.7 0.5 0.2	0.8 0.4 0.4	0.5 0.3 0.2	1.0 0.7 0.3	PRIVATE CONSUMPTION
民間住宅 新 旧 差	-0.3 -0.3 -0.0	0.6 0.6 0.0	-1.0 -1.0 -0.0	-0.5 -0.5 0.0	0.1 0.1 -0.0	0.0 -0.0 0.0	-0.3 -0.3 -0.0	-0.1 -0.1 0.0	-0.0 -0.0 0.0	0.1 0.1 -0.0	PRIVATE RESIDENTIAL INVESTMENT
民間企業設備 新 旧 差	0.5 0.5 -0.0	0.8 1.3 -0.6	0.5 1.2 -0.7	-1.1 -0.8 -0.3	-0.1 -0.1 0.1	1.0 1.3 -0.3	-0.3 -0.5 0.2	-0.4 -0.6 0.2	0.9 1.2 -0.3	0.8 0.8 -0.0	PRIVATE NON-RESI. INVESTMENT
民間在庫品増加 新 旧 差	0.4 0.4 -0.0	0.0 0.1 -0.1	0.3 0.1 0.1	-0.5 -0.7 0.2	-0.8 -0.2 -0.6	1.0 0.5 0.5	-0.4 -0.4 0.0	0.0 0.3 -0.2	0.2 0.1 0.1	-0.3 0.2 -0.4	PRIVATE INVENTORY
政府最終消費支出 新 旧 差	0.6 0.6 0.0	0.3 0.4 -0.0	0.1 0.2 -0.0	0.4 0.4 -0.0	0.6 0.7 -0.1	0.7 0.8 -0.1	0.5 0.5 0.0	0.4 0.4 -0.0	0.5 0.2 0.2	0.3 0.5 -0.2	GOVERNMENT CONSUMPTION
公的固定資本形成 新 旧 差	0.6 0.6 -0.0	-0.2 -0.2 0.0	-0.5 -0.5 -0.0	0.1 0.2 -0.0	-0.0 -0.1 0.0	-0.6 -0.6 0.0	-0.3 -0.3 -0.0	-0.3 -0.3 -0.0	-0.6 -0.5 -0.0	-0.7 -0.8 0.1	PUBLIC INVESTMENT
公的在庫品増加 新 旧 差	-0.0 -0.0 0.0	-0.0 0.0 -0.0	-0.0 -0.0 -0.0	-0.1 -0.0 -0.0	0.0 0.0 0.0	0.0 0.0 0.0	-0.0 -0.0 0.0	0.0 0.0 -0.0	-0.0 -0.0 -0.0	0.0 0.0 0.0	PUBLIC INVENTORY
財貨・サービスの輸出 新 旧 差	0.4 0.4 0.0	0.7 0.7 0.0	0.9 0.9 0.0	-0.4 -0.4 -0.0	0.6 0.6 0.0	1.0 1.0 0.0	-0.8 -0.8 -0.1	1.2 1.1 0.1	1.1 1.1 -0.0	1.4 1.4 -0.0	EXPORTS OF GOODS & SERVICES
財貨・サービスの輸入 (控除) 新 旧 差	-1.1 -1.1 -0.0	-0.8 -0.8 -0.0	0.2 0.2 0.0	0.6 0.6 0.0	-0.6 -0.6 0.0	-0.8 -0.7 -0.1	0.3 0.4 -0.1	-0.5 -0.5 0.0	-0.3 -0.3 -0.0	-0.9 -1.0 0.0	less : IMPORTS OF GOODS & SERVICES

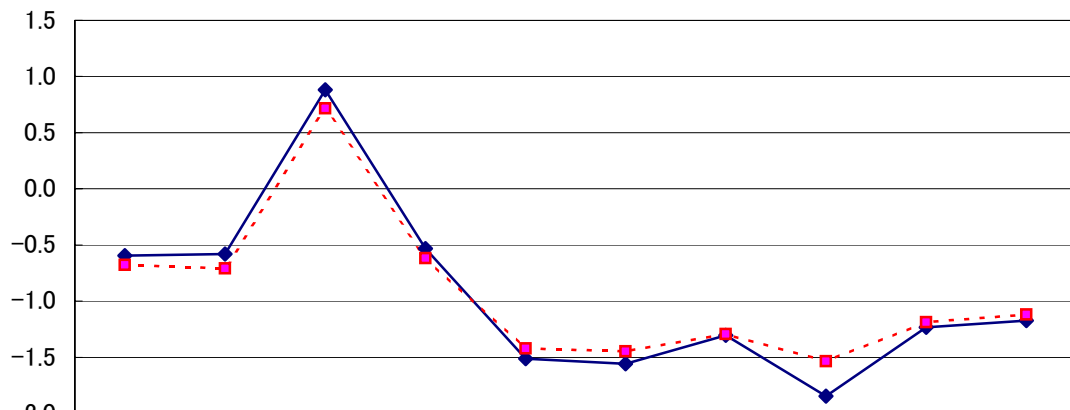
※： 各項目の上段(新)は平成12年基準、中段(旧)は平成7年基準の計数を示す。

For each component, the first lines are 2000CY benchmark figures, the second lines are 1995CY benchmark figures, and the third lines are differences between them.

3. GDPデフレーター上昇率の改定状況 Revisions to growth rates of GDP deflator

(前年度比、単位：%)

(Changes from the previous year, %)



	7年度 1995FY	8年度 1996FY	9年度 1997FY	10年度 1998FY	11年度 1999FY	12年度 2000FY	13年度 2001FY	14年度 2002FY	15年度 2003FY	16年度 2004FY
◆ 平成12年基準 (2000CY benchmark)	-0.6	-0.6	0.9	-0.5	-1.5	-1.6	-1.3	-1.8	-1.2	-1.2
■ 平成7年基準 (1995CY benchmark)	-0.7	-0.7	0.7	-0.6	-1.4	-1.4	-1.3	-1.5	-1.2	-1.1

4. 名目GDP及び各需要項目の改定状況

Revisions to nominal GDP and its components

(単位:10億円)

(Billion yen)

年度(平成) Fiscal Year	6年 1994	7年 1995	8年 1996	9年 1997	10年 1998	11年 1999		
国内総生産(GDP)	新	486,946.9	495,735.7	506,479.5	510,465.8	501,383.5	496,605.8	GROSS DOMESTIC PRODUCT
	旧	491,271.7	500,002.5	514,268.9	520,811.8	512,784.0	508,283.2	
	差	-4,324.7	-4,266.8	-7,789.4	-10,346.0	-11,400.6	-11,677.4	
民間最終消費支出	新	267,947.3	273,248.6	280,684.4	281,917.5	281,964.3	283,331.6	PRIVATE CONSUMPTION
	旧	273,687.7	278,772.5	286,366.2	287,602.7	288,263.6	287,037.1	
	差	-5,740.4	-5,523.9	-5,681.8	-5,685.2	-6,299.3	-3,705.5	
民間住宅	新	25,787.9	24,185.4	27,736.1	22,757.0	19,850.9	20,424.3	PRIVATE RESIDENTIAL
	旧	25,787.9	24,185.4	27,737.5	22,767.8	19,828.1	20,431.1	
	差	0.0	-0.0	-1.4	-10.8	22.8	-6.8	
民間企業設備	新	72,543.9	73,365.5	75,735.1	77,579.4	70,646.3	68,736.9	PRIVATE NON-RESI. INVESTMENT
	旧	72,686.5	73,568.5	78,639.8	83,815.6	78,134.5	75,691.2	
	差	-142.6	-203.0	-2,904.7	-6,236.1	-7,488.1	-6,954.3	
民間在庫品増加	新	-571.2	1,347.1	1,313.1	2,851.7	244.4	-3,986.2	PRIVATE INVENTORY
	旧	41.1	1,759.0	2,285.4	3,066.1	-723.6	-1,807.4	
	差	-612.3	-411.9	-972.3	-214.5	968.0	-2,178.8	
政府最終消費支出	新	72,232.7	75,310.4	77,806.7	79,367.1	80,866.0	82,679.7	GOVERNMENT CONSUMPTION
	旧	70,319.7	73,298.0	76,028.1	77,457.6	79,215.5	81,450.0	
	差	1,913.0	2,012.4	1,778.5	1,909.5	1,650.6	1,229.7	
公的固定資本形成	新	39,402.3	42,034.8	40,793.5	38,588.5	38,304.6	37,501.8	PUBLIC INVESTMENT
	旧	39,372.6	42,195.6	40,796.8	38,665.9	38,522.7	37,586.8	
	差	29.7	-160.8	-3.3	-77.4	-218.2	-85.0	
公的在庫品増加	新	497.5	350.1	274.2	233.8	-63.3	89.2	PUBLIC INVENTORY
	旧	269.5	329.6	278.5	265.4	-27.0	66.0	
	差	228.0	20.5	-4.3	-31.6	-36.2	23.3	
財貨・サービスの輸出	新	44,283.9	46,221.8	51,054.0	56,397.5	53,493.8	52,151.4	EXPORTS OF GOODS & SERVICES
	旧	44,283.9	46,221.8	51,054.0	56,397.5	53,493.8	52,151.4	
	差	0.0	0.0	0.0	0.0	0.0	0.0	
財貨・サービスの輸入 (控除)	新	35,177.4	40,327.9	48,917.5	49,226.7	43,923.6	44,322.9	less : IMPORTS OF GOODS & SERVICES
	旧	35,177.4	40,327.9	48,917.4	49,226.8	43,923.5	44,322.9	
	差	0.0	0.0	0.1	-0.1	0.1	0.0	

※: 各項目の上段(新)は平成12年基準、中段(旧)は平成7年基準の計数を示す。

For each component, the first lines are 2000CY benchmark figures, the second lines are 1995CY benchmark figures and the third lines are differences between them.

4. 名目GDP及び各需要項目の改定状況（続）

Revisions to nominal GDP and its components (cont.)

(単位:10億円)

(Billion yen)

年度(平成) Fiscal Year		12年 2000	13年 2001	14年 2002	15年 2003	16年 2004	
国内総生産(GDP)	新	502,783.1	492,346.7	488,724.4	493,553.2	496,197.0	GROSS DOMESTIC PRODUCT
	旧	513,478.0	501,280.7	497,530.3	501,648.8	505,427.8	
	差	-10,694.9	-8,934.0	-8,805.9	-8,095.5	-9,230.8	
民間最終消費支出	新	282,785.3	282,370.1	282,481.8	282,328.7	285,249.1	PRIVATE CONSUMPTION
	旧	286,115.6	285,234.5	284,301.6	283,748.5	285,831.1	
	差	-3,330.3	-2,864.4	-1,819.8	-1,419.9	-582.1	
民間住宅	新	20,324.2	18,495.8	17,888.3	17,897.0	18,303.9	PRIVATE RESIDENTIAL
	旧	20,310.1	18,496.3	17,887.5	17,809.2	18,270.1	
	差	14.1	-0.5	0.8	87.8	33.8	
民間企業設備	新	72,264.2	68,691.0	65,216.4	68,106.4	71,126.8	PRIVATE NON-RESI. INVESTMENT
	旧	80,783.3	76,060.6	71,537.3	75,377.7	78,272.9	
	差	-8,519.2	-7,369.6	-6,320.8	-7,271.3	-7,146.0	
民間在庫品増加	新	999.8	-755.5	-639.3	299.1	-982.6	PRIVATE INVENTORY
	旧	680.5	-1,366.3	68.0	353.7	1,158.1	
	差	319.3	610.8	-707.3	-54.7	-2,140.7	
政府最終消費支出	新	85,625.2	87,566.6	87,565.5	88,482.7	89,291.2	GOVERNMENT CONSUMPTION
	旧	84,903.2	86,985.9	87,536.3	88,002.0	89,519.1	
	差	722.0	580.7	29.2	480.8	-227.8	
公的固定資本形成	新	34,356.6	32,011.3	29,900.2	27,124.7	24,021.9	PUBLIC INVESTMENT
	旧	34,373.9	32,044.6	30,025.3	27,229.4	23,284.3	
	差	-17.3	-33.4	-125.0	-104.7	737.7	
公的在庫品増加	新	232.0	98.4	114.4	119.4	257.1	PUBLIC INVENTORY
	旧	115.6	-44.2	-22.5	-67.0	162.8	
	差	116.5	142.6	136.9	186.3	94.2	
財貨・サービスの輸出	新	55,632.4	52,272.5	56,679.0	60,375.7	67,038.7	EXPORTS OF GOODS & SERVICES
	旧	55,632.4	52,272.5	56,679.0	60,375.7	67,038.7	
	差	0.0	0.0	0.0	0.0	0.0	
財貨・サービスの輸入 (控除)	新	49,436.6	48,403.5	50,481.9	51,180.4	58,109.2	less : IMPORTS OF GOODS & SERVICES
	旧	49,436.6	48,403.3	50,482.0	51,180.5	58,109.3	
	差	0.0	0.2	-0.1	-0.1	-0.1	

※: 各項目の上段(新)は平成12年基準、中段(旧)は平成7年基準の計数を示す。

For each component, the first lines are 2000CY benchmark figures, the second lines are 1995CY benchmark figures, and the third lines are differences between them.

5. 実質GDP及び各需要項目の改定状況

Revisions to real GDP and its components

(平成12暦年連鎖価格、単位:10億円)

(Billions of chained (2000) yen)

年度(平成) Fiscal Year	6年 1994	7年 1995	8年 1996	9年 1997	10年 1998	11年 1999		
国内総生産(GDP)	新	469,620.9	480,963.3	494,261.8	493,793.5	487,603.2	490,369.4	GROSS DOMESTIC PRODUCT
	旧	472,624.8	484,310.4	501,685.8	504,450.5	499,765.1	502,520.1	
	差	-3,003.9	-3,347.1	-7,424.0	-10,657.0	-12,161.9	-12,150.7	
民間最終消費支出	新	266,377.4	272,721.2	279,497.0	276,590.6	277,422.4	280,776.3	PRIVATE CONSUMPTION
	旧	271,935.3	278,402.1	285,660.6	283,036.5	284,723.2	285,116.7	
	差	-5,557.9	-5,681.0	-6,163.6	-6,445.9	-7,300.8	-4,340.4	
民間住宅	新	25,313.6	23,905.2	27,094.4	21,977.4	19,666.7	20,358.9	PRIVATE RESIDENTIAL
	旧	25,349.6	23,962.8	27,172.9	22,049.9	19,688.6	20,408.1	
	差	-36.1	-57.6	-78.5	-72.5	-21.8	-49.2	
民間企業設備	新	65,519.8	67,581.7	71,161.1	73,476.3	68,165.0	67,845.9	PRIVATE NON-RESI. INVESTMENT
	旧	65,347.0	67,472.6	73,692.4	79,264.9	75,312.8	74,686.8	
	差	172.8	109.1	-2,531.3	-5,788.6	-7,147.8	-6,840.9	
民間在庫品増加	新	-406.3	1,287.7	1,338.4	2,664.3	38.3	-3,885.1	PRIVATE INVENTORY
	旧	-85.0	1,667.6	2,223.4	2,885.6	-815.4	-1,758.9	
	差	-321.3	-379.9	-885.0	-221.2	853.7	-2,126.2	
政府最終消費支出	新	71,740.1	74,647.8	76,294.4	76,949.2	78,964.1	82,193.7	GOVERNMENT CONSUMPTION
	旧	69,500.7	72,362.6	74,250.6	75,037.4	77,316.2	80,994.2	
	差	2,239.4	2,285.2	2,043.9	1,911.8	1,647.9	1,199.4	
公的固定資本形成	新	37,679.7	40,500.7	39,418.3	36,971.4	37,578.6	37,377.3	PUBLIC INVESTMENT
	旧	37,617.0	40,612.6	39,422.0	37,085.6	37,849.3	37,525.8	
	差	62.8	-111.9	-3.7	-114.2	-270.7	-148.4	
公的在庫品増加	新	456.8	334.4	266.7	223.5	-49.7	96.3	PUBLIC INVENTORY
	旧	412.5	260.1	268.0	233.6	-20.5	75.6	
	差	44.3	74.4	-1.2	-10.1	-29.2	20.7	
財貨・サービスの輸出	新	40,679.5	42,557.1	45,838.2	49,908.9	48,071.4	50,726.9	EXPORTS OF GOODS & SERVICES
	旧	40,686.3	42,565.0	45,851.6	49,923.7	48,085.1	50,743.0	
	差	-6.8	-7.9	-13.4	-14.8	-13.6	-16.2	
財貨・サービスの輸入 (控除)	新	36,253.4	41,735.0	46,013.9	45,115.8	42,199.1	44,866.6	less : IMPORTS OF GOODS & SERVICES
	旧	36,354.0	41,835.9	46,041.3	45,148.9	42,227.5	45,024.5	
	差	-100.6	-100.9	-27.4	-33.2	-28.4	-157.9	

※: 各項目の上段(新)は平成12年基準、中段(旧)は平成7年基準の計数を示す。

For each component, the first lines are 2000CY benchmark figures, the second lines are 1995CY benchmark figures and the third lines are differences between them.

5. 実質GDP及び各需要項目の改定状況（続）

Revisions to real GDP and its components (cont.)

(平成12暦年連鎖価格、単位:10億円)

(Billions of chained (2000) yen)

年度(平成) Fiscal Year		12年 2000	13年 2001	14年 2002	15年 2003	16年 2004	
国内総生産(GDP)	新	504,332.5	500,387.8	506,048.3	517,435.0	526,378.0	GROSS DOMESTIC PRODUCT
	旧	515,110.3	509,458.9	513,536.4	524,008.2	533,932.2	
	差	-10,777.8	-9,071.1	-7,488.1	-6,573.2	-7,554.2	
民間最終消費支出	新	283,404.5	286,721.1	290,569.7	292,880.7	297,888.6	PRIVATE CONSUMPTION
	旧	286,621.8	289,036.1	291,116.1	292,621.7	296,185.8	
	差	-3,217.3	-2,315.0	-546.5	259.1	1,702.8	
民間住宅	新	20,366.0	18,789.0	18,382.4	18,381.0	18,687.4	PRIVATE RESIDENTIAL
	旧	20,342.9	18,743.3	18,319.4	18,264.3	18,649.1	
	差	23.1	45.7	63.0	116.7	38.3	
民間企業設備	新	72,761.4	71,099.3	69,264.1	74,133.2	78,128.6	PRIVATE NON-RESI. INVESTMENT
	旧	81,224.7	78,465.8	75,533.3	81,828.3	85,977.3	
	差	-8,463.3	-7,366.5	-6,269.2	-7,695.1	-7,848.7	
民間在庫品増加	新	1,081.9	-844.4	-708.6	473.3	-909.2	PRIVATE INVENTORY
	旧	768.5	-1,455.5	-10.0	522.3	1,410.4	
	差	313.4	611.1	-698.7	-49.1	-2,319.6	
政府最終消費支出	新	85,605.0	88,067.8	89,898.2	92,174.1	93,816.9	GOVERNMENT CONSUMPTION
	旧	84,833.2	87,221.1	89,321.5	90,401.0	92,844.4	
	差	771.8	846.7	576.7	1,773.2	972.5	
公的固定資本形成	新	34,484.9	32,745.4	31,009.6	28,057.2	24,567.0	PUBLIC INVESTMENT
	旧	34,470.9	32,714.4	31,041.7	28,243.3	23,974.1	
	差	14.0	31.1	-32.2	-186.1	592.9	
公的在庫品増加	新	238.0	114.7	150.2	131.9	280.1	PUBLIC INVENTORY
	旧	112.0	-52.4	-8.3	-26.5	97.1	
	差	126.0	167.1	158.5	158.4	183.0	
財貨・サービスの輸出	新	55,376.2	51,133.8	56,987.8	62,496.6	69,618.4	EXPORTS OF GOODS & SERVICES
	旧	55,452.6	51,518.0	57,196.9	62,904.1	70,405.6	
	差	-76.5	-384.3	-209.2	-407.5	-787.2	
財貨・サービスの輸入 (控除)	新	49,076.5	47,537.9	49,782.8	51,352.6	55,836.7	less : IMPORTS OF GOODS & SERVICES
	旧	48,728.8	46,831.4	49,165.2	50,693.4	55,434.2	
	差	347.7	706.5	617.6	659.3	402.5	

※: 各項目の上段(新)は平成12年基準、中段(旧)は平成7年基準の計数を示す。

For each component, the first lines are 2000CY benchmark figures, the second lines are 1995CY benchmark figures, and the third lines are differences between them.

IV. Notice on Usage

(1) Recording Acquisitions of Pre-packaged Computer Software as GFCF

Among the following types of computer software*, acquisitions of only customized software were previously recorded as gross fixed capital formation (GFCF). Portions of acquisitions of pre-packaged software are now recorded as GFCF.

* Computer software can be classified as follows. Among them, transactions of own account software are currently not estimated due to the limitation of source data.

- Customized software—custom-made software ordered from outside producers
- Pre-packaged software—ready-made software generally purchased on the market
- Own account software—software produced in-house

(2) Modification of the Estimation Method for Imputed Rent

The estimation method for “imputed service of owner-occupied dwellings” was modified to reflect differences in qualities and environmental factors between owner-occupied dwellings and rented ones. Specifically, for the benchmark years of 1998, 2003, and others, a direct extrapolation method is adopted, in which rent for rented dwellings of equivalent quality is directly applied to owner-occupied ones. Qualities taken into account are location (by prefecture), type of structure (wooden or other materials), and time of construction (by seven periods).

(3) Modification of the Estimation Method for CFC of the General Government

For consumption of social fixed capital such as roads, dams, and other infrastructure, the estimation method for figures in flow accounts was modified, following recommendations in *SNA93*, to make them consistent with those in stock accounts. Previously, nominal fixed investment as the basis of the estimation of consumption of fixed capital (CFC) in flow accounts was valued at historic costs (on a book value basis). In the new method, time series data for nominal fixed investment at replacement costs (on a current price basis)—which are calculated in the compilation of stock accounts by multiplying nominal fixed investment at historic costs by percentage changes in prices to date—are used.

(4) Modification of the Estimation Method for Demand-side Indicators of Private Non-residential Investment by Non-financial Corporations

The “Quarterly Financial Statements Statistics of Corporations by Industries” is used to estimate the demand-side indicator for private non-residential investment. To eliminate biases caused by sampling and varying response rates, investment figures of the survey are adjusted,

using differences in stock level between the end of the previous quarter and the beginning of the current quarter (these two figures are assumed to be equal). Previously, investment figures in total were adjusted, using stock figures in total. In the new method, to obtain more precise estimates, the adjustment is conducted by enterprise capital size group.

(5) Modification of the Estimation Method for Final Consumption Expenditure of Households—
Changes in Disaggregation of Demand-side Indicators by Type of Household

Previously, demand-side indicators for final consumption expenditure of households were estimated separately by the following three types of household: non-farm households of two or more persons, non-farm one-person households, and farm households. The data on farm household expenditure in the “Statistics on Trend of Farm Management and Economy (Monthly Report)” were used to estimate the final consumption expenditure of farm households. Since this survey was merged into another survey in January 2004, and the necessary data are no longer available, the estimation method was modified. In the new method, the demand-side indicators for final consumption expenditure of households are estimated by two types of household: households of two or more persons (including farm households) and one-person households (including farm households).

V. Release Schedule of Results of the Annual Revision for FY2004 and the 2000 Benchmark Revision

December 2, 2005 (this release)	GDP (expenditure series), etc.
Mid-January, 2006	Income and outlay accounts, series on income distribution, etc.
End of January - February 2006	Capital finance accounts, etc.
End of March - April 2006	Stock accounts, etc.

Note) The above schedule may be changed, depending on the progress of estimation work and other factors.