

Provisional Estimation of Chain-linked GDP

In order to review the method at the advisory committee, interim chain-linked estimates were calculated by using the same data sources for compiling the first preliminary quarterly estimates of GDP for July - September 2004, published on November 12, 2004. The methods used are as follows.

Types of chain indexes:

Volume measures: Laspeyres type index based on previous calendar years

Deflators: Paasche type index based on previous calendar years

Reference year (The year for which the deflators are expressed as equal to 100):

Calendar year 1995

Terms of Estimation:

From Jan.-Mar.1994, to Jul.-Sep, 2004

Number of aggregated items by chain indexing:

about 2000 item

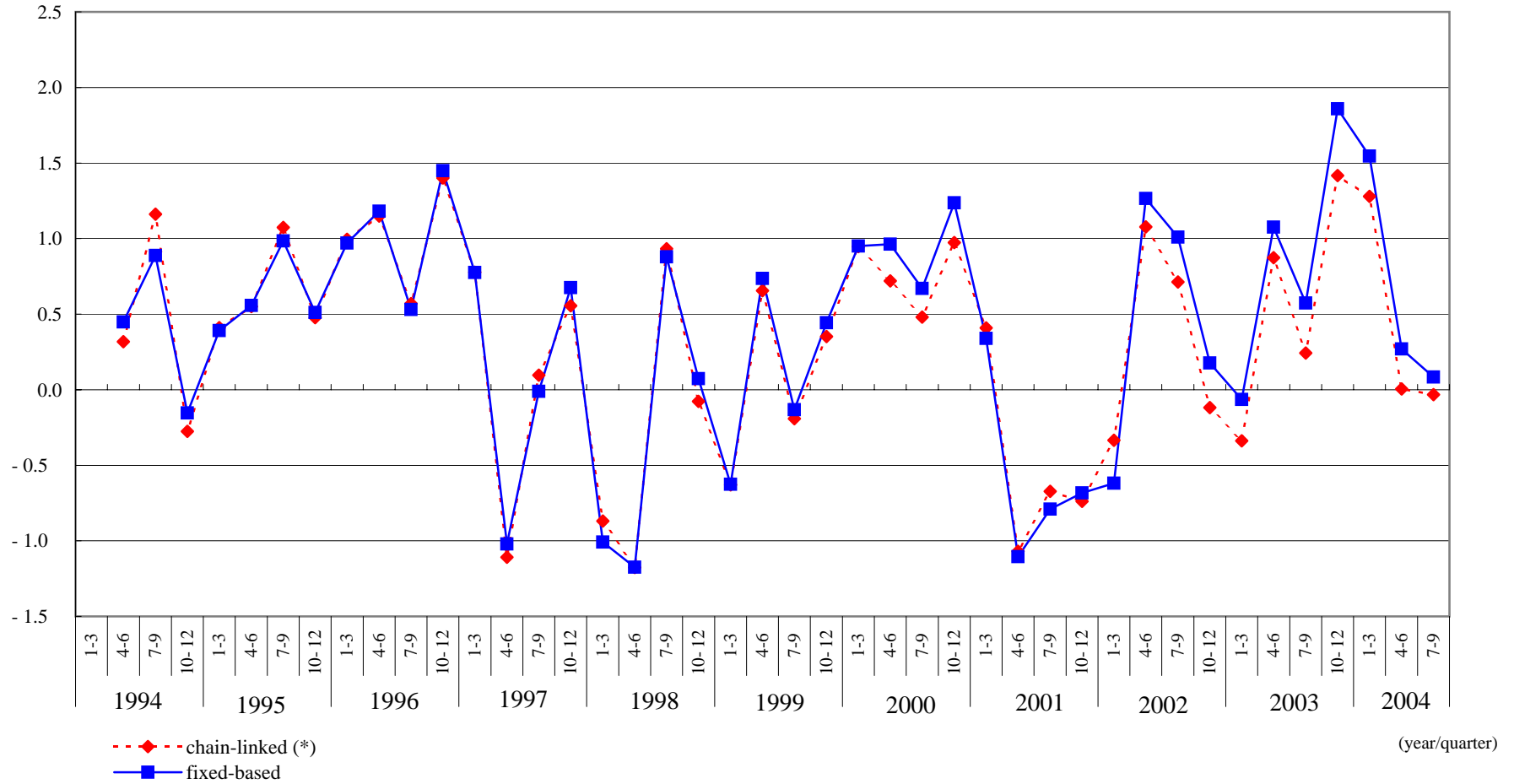
Seasonal Adjustment:

Applying to major 20 demand components

annotation: The second preliminary quarterly estimates of GDP for July - September 2004 will be published on December 8, 2004, based on the revised data of annual estimate of year 2003 and recent released data of Business Outlook Survey etc.

(Provisional Estimation)

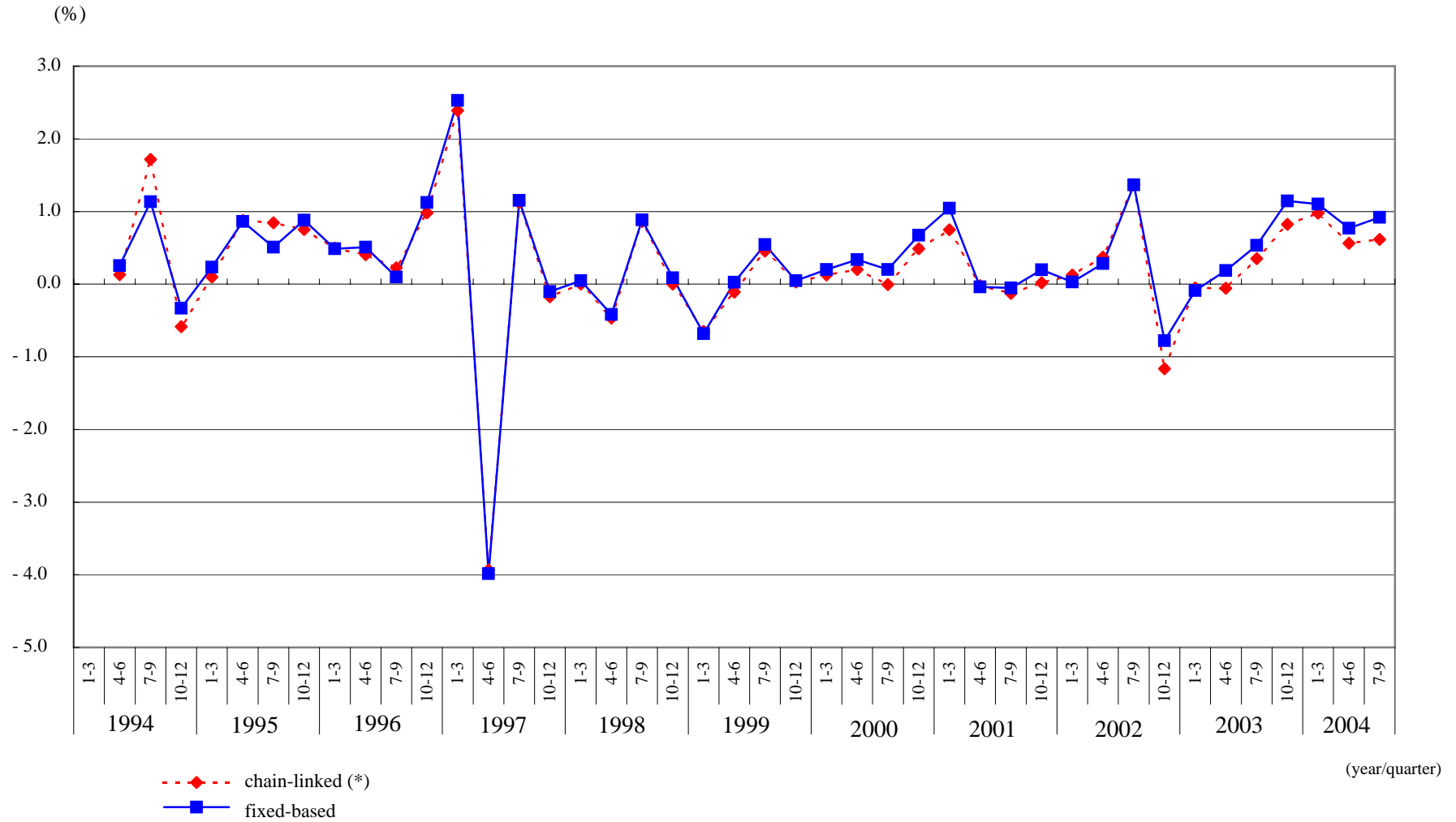
(%) Figure 1 Real GDE (changes from the previous quarter, seasonally adjusted)



(*) Volume measures: Laspeyres type index based on previous calendar years

Deflators: Paasche type index based on previous calendar years

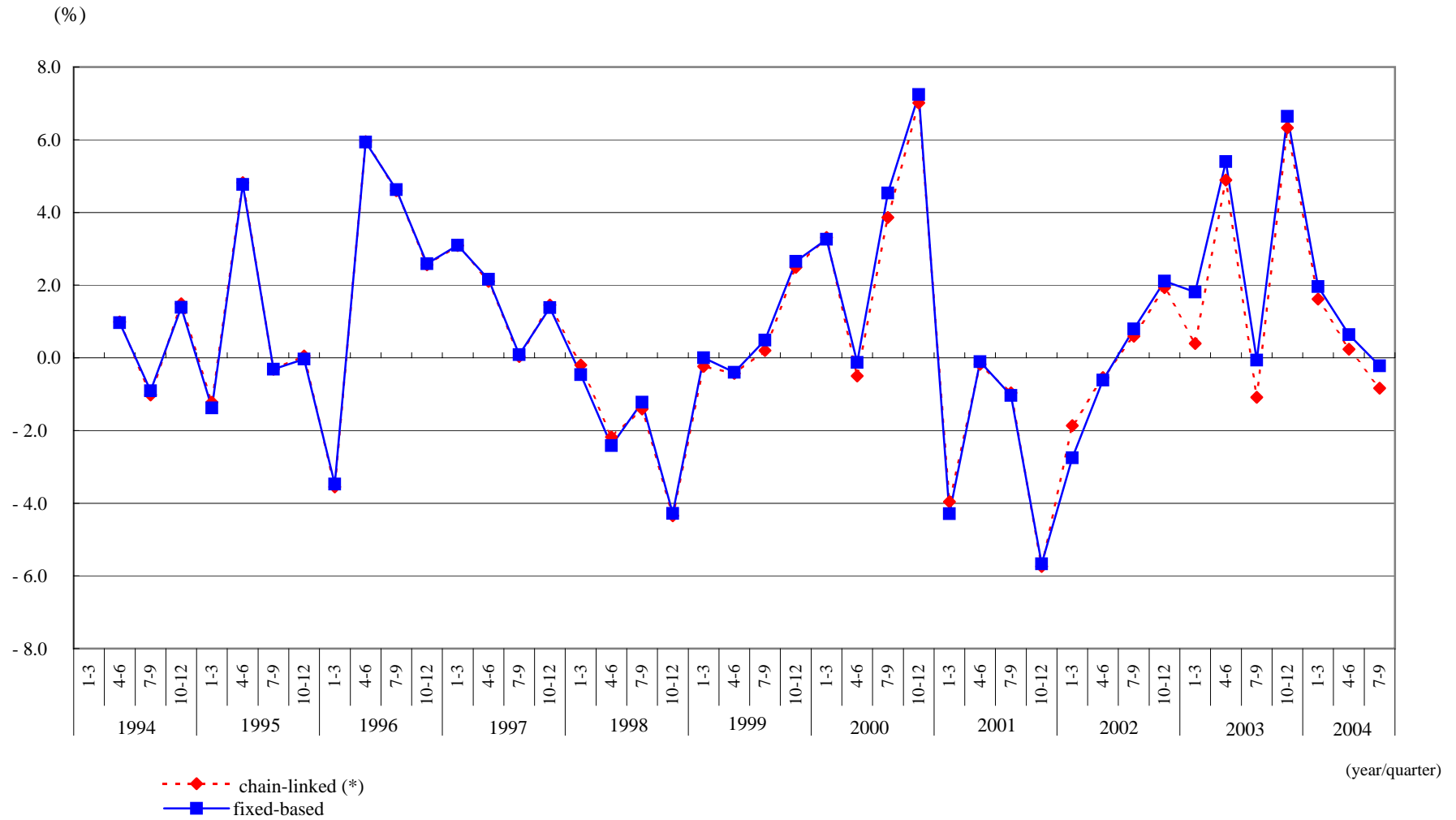
Figure 2 Real consumption of households (changes from previous quarter, seasonally adjusted)



(*) Volume measures: Laspeyres type index based on previous calendar years

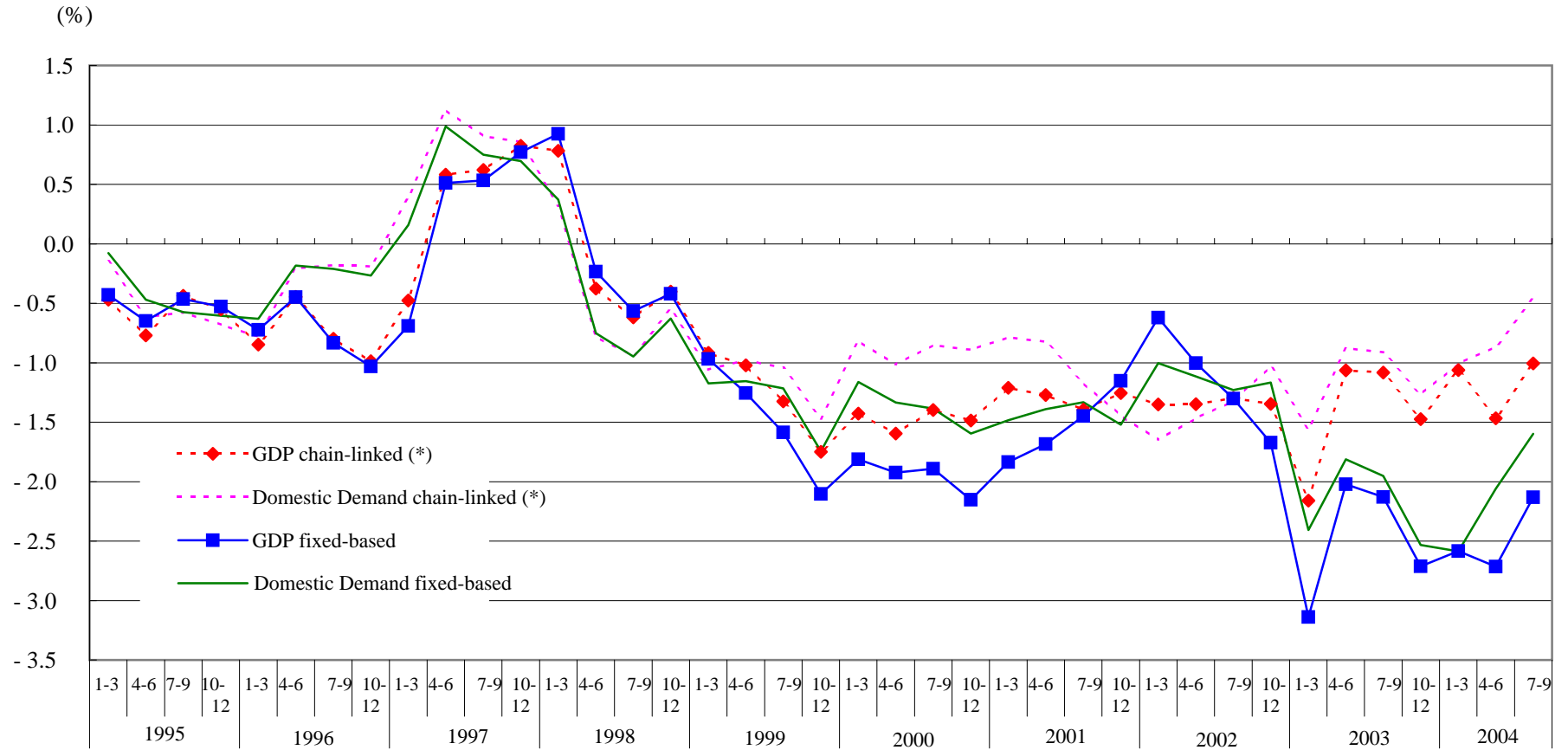
Deflators: Paasche type index based on previous calendar years

Figure 3 Real private non-residential investment (changes from previous quarter, seasonally adjusted)



(*) Volume measures: Laspeyres type index based on previous calendar years
 Deflators: Paasche type index based on previous calendar years

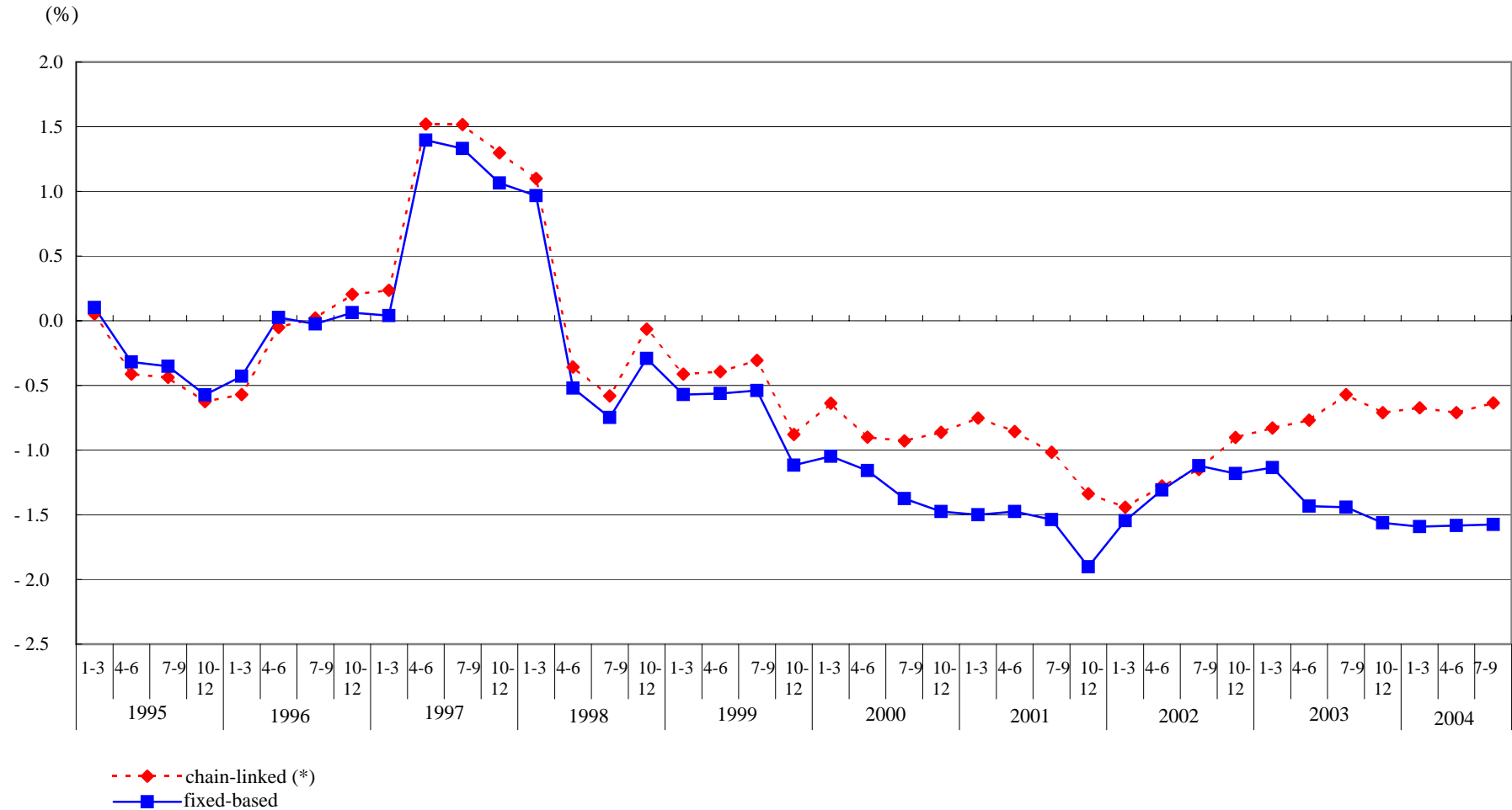
Figure 4 GDP deflator and domestic demand deflator (changes from previous year)



(*) Volume measures: Laspeyres type index based on previous calendar years

Deflators: Paasche type index based on previous calendar years

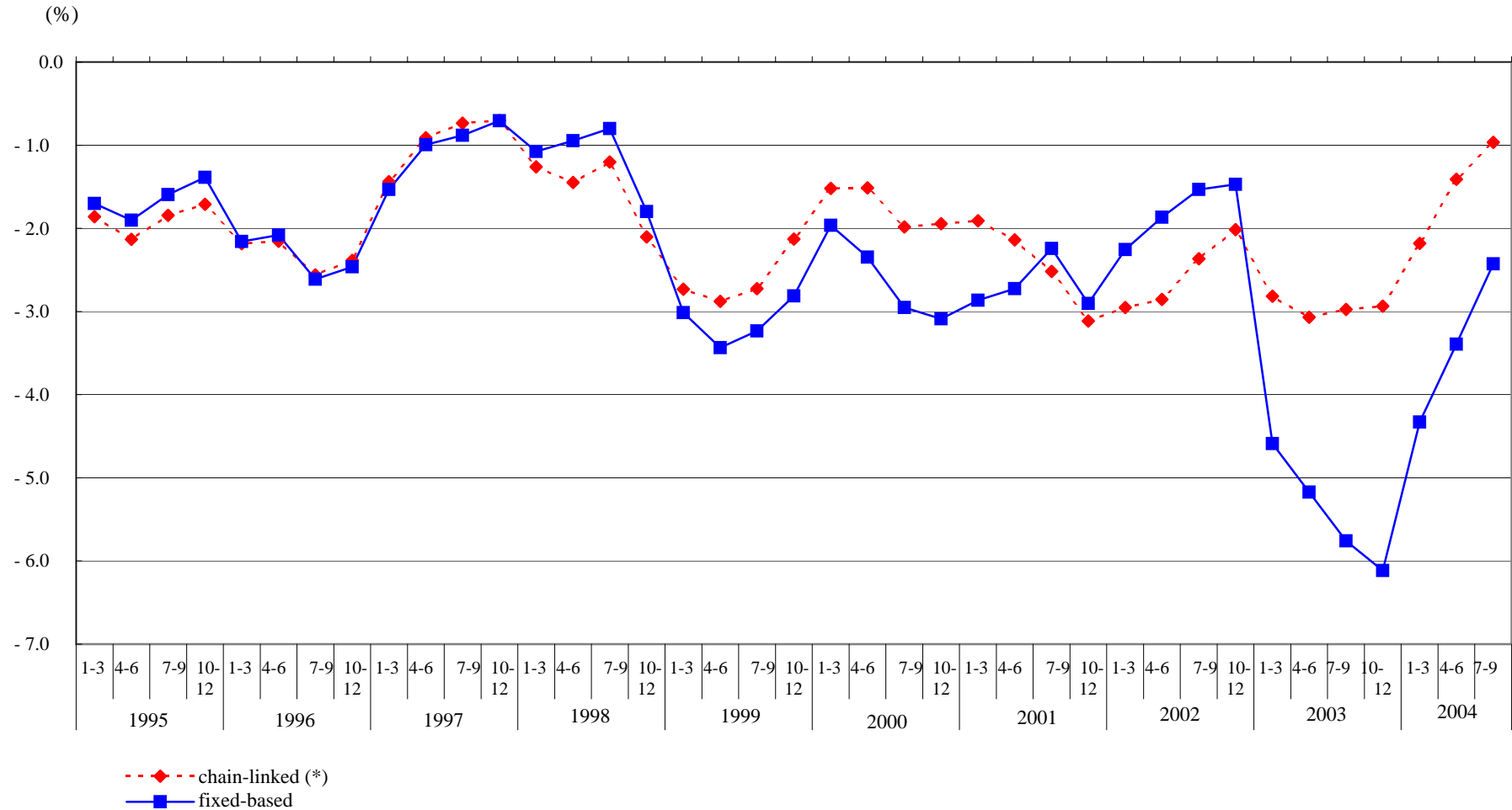
Figure 5 Households consumption deflator (changes from previous year)



(*) Volume measures: Laspeyres type index based on previous calendar years

Deflators: Paasche type index based on previous calendar years

Figure 6 Private non-residential investment deflator (changes from previous year)



(*) Volume measures: Laspeyres type index based on previous calendar years

Deflators: Paasche type index based on previous calendar years