

In Search of Accurate Measures of Income Inequality across Japanese Households[†]

Masahiro Hori^{a,b*}, Saeko Maeda^a, and Fumihiko Suga^{a,c*}

^a Economic and Social Research Institute, Cabinet Office, Japan

^b School of International and Public Policy, Hitotsubashi University, Japan

^c Department of Economics, Kyushu University, Japan

August 2020

Table and Figures

[†]This paper forms part of our microdata-based research at the Economic and Social Research Institute (ESRI) on household consumption, labor supply, and macroeconomic policies in Japan. We are grateful to Professor Tomoaki Yamada for his valuable comments on an earlier version of this paper. We would also like to thank Junya Hamaaki, Keiko Murata, Koichiro Iwamoto, and other ESRI colleagues for their support, and Ralph Paprzycki for his English editing service. Special thanks go to the Statistics Bureau of Japan for providing us with the microdata from the *National Survey on Family Income and Expenditure* (NSFIE) and the *Population Census*. The views expressed in this paper are those of the authors and do not represent those of the institutions to which the authors belong.

* Corresponding author

Table 1: Summary statistics: NSFIE raw data

	<i>National Survey of Family Income and Expenditures</i>		
	1989	1999	2009
Number of households	56,017	55,919	51,033
Age of household head (mean)	47.9 (13.0)	51.0 (14.1)	55.2 (14.6)
Number of family members (mean)	3.6 (1.5)	3.2 (1.4)	3.0 (1.3)
Household pre-tax income (mean)	685.0 (463.0)	706.2 (465.6)	623.7 (436.2)
Household disposable income (mean)	567.6 (327.5)	579.1 (347.3)	499.0 (319.0)
Equalized pre-tax income (mean)	340.2 (223.1)	413.6 (255.8)	365.8 (245.8)
Equalised disposable income (mean)	281.7 (154.0)	339.4 (188.9)	292.7 (176.7)

Notes: Figures in parentheses are standard deviations.

Equalized income here is defined as income divided by the square root of the number of family members.

Table 2. Summary statistics: Population Census data vs. NSFIE data

	(A) Population Census					(B) National Survey of Family Income and Expenditures				
						(B-1) Raw data				
	1990	2000	2010	1989	1999	2009	1989	1999	2009	
Number of households	39,283,207	45,046,024	48,886,982	56,017	55,919	51,033				
Average number of family members	3.0 (1.6)	2.7 (1.5)	2.5 (1.4)	3.6 (1.5)	3.2 (1.4)	3.0 (1.3)	3.3 (1.7)	2.7 (1.5)	2.5 (1.4)	
Mean of age of household head	49.1 (15.1)	52.0 (16.3)	55.1 (17.1)	47.9 (13.0)	51.0 (14.1)	55.2 (14.6)	47.5 (14.0)	50.7 (15.4)	54.8 (15.9)	
Share of self-employed households	15.6%	12.2%	8.7%	17.8%	14.0%	12.6%	16.1%	12.5%	10.9%	
Share of jobless households	12.1%	20.2%	28.5%	7.9%	14.0%	21.0%	10.4%	18.1%	25.9%	
Share of elderly households (age > 60)	23.9%	32.1%	41.4%	18.6%	27.4%	39.1%	19.9%	29.7%	40.4%	
Share of single households	20.9%	25.5%	29.2%	6.7%	8.2%	7.5%	18.5%	26.2%	29.3%	
Share of home-owner households	61.0%	61.7%	63.9%	74.4%	75.0%	80.5%	67.7%	66.2%	71.1%	
Share of nuclear family households among two-or-more-person households	49.6%	50.5%	53.3%	71.4%	77.7%	81.0%	73.8%	79.3%	82.6%	
Share of dual-income households among nuclear family households	41.6%	41.8%	45.9%	52.1%	53.4%	57.3%	50.2%	52.1%	55.2%	

Notes: 1. Figures in parentheses are standard deviations.

2. The "Adjusted data" in the columns on the right show the sample statistics of the adjusted data using the sampling weights officially provided by the Ministry of Internal Affairs and Communications for the NSFIE micro data.

3. Nuclear family households in the denominator here are limited to households with household heads aged 60 years or younger.

Table 3(a): Inverse of the adjustment factors ($1/w_{j,t} \equiv \hat{s}_{j,t}/s_{j,t}$) by weighting cell (household group): Single-person households in the raw 2009 NSFIE data

NSFIE 2009			Renter			Home-owner										
			-40	41-60	61-	-40	41-60	61-								
Single male	No worker	Designated cities	0.0160			0.1179			0.0652			0.1989				
		Tokyo 23 wards														
		Other cities in Area 1														
		Other cities in Area 2														
		Other cities in Area 3														
		Other cities in Area 4														
	Other cities in Area 5	0.2358			0.3431											
	One worker	Designated cities	0.0550	0.0685	0.1389			0.1116	0.2646	0.1794						
		Tokyo 23 wards						0.1433								
		Other cities in Area 1	0.2238	0.1133				0.3172								
		Other cities in Area 2	0.0997	0.1446				0.1763	0.3584			0.3683				
		Other cities in Area 3	0.1459	0.0969				0.2313								
Other cities in Area 4		0.2069	0.1698	0.2498				0.2549								
Other cities in Area 5	0.3237	0.2374	0.2525	0.3020	0.4466	0.3033										
Single female	No worker	Designated cities	0.0617			0.1277			0.2630			0.3546				
		Tokyo 23 wards														
		Other cities in Area 1														
		Other cities in Area 2														
		Other cities in Area 3														
		Other cities in Area 4														
	Other cities in Area 5	0.3547			0.6240	0.6362										
	One worker	Designated cities	0.0836	0.2054	0.2106			0.1713	0.3646	0.3067						
		Tokyo 23 wards		0.0886				0.1495								
		Other cities in Area 1	0.3278	0.3215				0.5977	0.7783			0.5902				
		Other cities in Area 2	0.2138	0.3739				0.4672	0.1355					0.6748		
		Other cities in Area 3	0.1830	0.3421				0.4292	0.6060							
Other cities in Area 4		0.3176	0.4485	0.6414				0.1931	0.8120					0.5091		
Other cities in Area 5	0.3710	0.4938	0.3673	0.6187												

Table 3(b): Inverse of the adjustment factors ($1/w_{j,t} \equiv \hat{s}_{j,t}/s_{j,t}$) by weighting cell (household group): Two-or-more-person households in the raw 2009 NSFIE data

NSFIE 2009			Renter			Home-owner (small)			Home-owner (large)								
			-40	41-60	61-	-40	41-60	61-	-40	41-60	61-						
Two-or-more-person with no worker		Designated cities	0.0842	0.0856	0.5370	0.1988	0.7469	0.4791	0.1955	1.0114	0.5082						
		Tokyo 23 wards			0.1394												
		Other cities in Area 1		0.2452	1.1066							0.4114	1.5980	0.8804	2.4784		
		Other cities in Area 2	0.1503	0.2239	0.7983							0.3870	1.2768	1.0843	2.1783		
		Other cities in Area 3		0.2314	1.1656							0.4097	1.1137	0.7459	1.9120		
		Other cities in Area 4	0.3113	0.4669	1.0660							0.4353	1.4725	0.8979	2.4660		
Couple only	One worker	Other cities in Area 5	0.2491	0.4032	0.9934	0.4794	1.5959	1.0391	2.8640								
		Designated cities	0.6151	0.6871	0.4795	0.4268	0.9658	0.6975	1.1279	0.9175							
		Tokyo 23 wards	0.3226	0.3091	0.2725	0.2520	0.3628	0.4036	0.7247	0.4669							
		Other cities in Area 1	0.8995	0.9652	1.1162	1.3912	1.5874	1.6099	3.2691	2.3496							
		Other cities in Area 2	0.7628	0.6991	0.5708	1.5715	1.5459	1.4559	2.8762	2.3139							
		Other cities in Area 3	1.0889	1.2140	1.4580	0.7846	1.2758	1.2303	2.1291	1.7553							
	Multiple workers	Other cities in Area 4	0.7110	1.4467	1.1507	0.9683	1.7002	1.1808	1.3605	2.8555	2.0876						
		Other cities in Area 5	1.1587	1.7369	1.4434							1.9259	1.5278	3.9646	2.6343		
		Designated cities	0.3786	0.6856	0.6694							0.2865	0.5313	0.4709	1.1605	0.8207	0.6764
		Tokyo 23 wards	0.1825	0.2145	0.2943							0.3983	0.2953				0.5148
		Other cities in Area 1	0.9929	0.7592	1.1717							0.8945	1.4902	1.6225	2.1889	2.8661	2.8825
		Other cities in Area 2	0.6692	0.6189	0.6654							1.2617	1.4638	1.4881	1.6667	3.0343	1.7409
	Single parent with child(ren)	One worker	Other cities in Area 3	0.7844	0.6952	0.8804	0.9221	1.3549	1.1005	1.0833	1.8567	1.6288					
			Other cities in Area 4	1.2195	1.6887	1.0222	0.9451	1.7600	1.5027	2.2852	2.9862	2.1699					
			Other cities in Area 5	1.4578	1.5574	1.0944	1.3163	1.9366	1.4879	2.1085	3.6253	2.7292					
			Designated cities	0.7016	0.9680		0.4727	1.9922		4.8117	7.6138						
			Tokyo 23 wards	0.4549	0.6399			1.3735									
			Other cities in Area 1	0.8897	1.5951			4.1292									
Other cities in Area 2		0.7993	1.2901	2.1002		2.1637											
Other cities in Area 3		0.9407	1.6342			2.0853											
Other cities in Area 4		1.3326	2.0000	2.2017		3.9462											
Parents with child(ren)		One worker	Other cities in Area 5	1.7372	2.0075	3.1079	4.6655										
			Designated cities	0.9526	1.5204	0.7421	1.6849		0.7944	2.0344							
			Tokyo 23 wards	0.5560	0.5090	0.3806	0.7692			1.4537							
	Other cities in Area 1		1.6862	2.1721	1.8351	3.4416	2.5297	5.1548									
	Other cities in Area 2		1.0185	1.3428	1.6661	3.4895	2.3521	4.7558									
	Other cities in Area 3		1.4580	1.9105	1.9113	3.5655	1.7726	4.1447									
	Multiple workers	Other cities in Area 4	1.6922	2.3265	1.7477	3.4695	2.1379	4.9084									
		Other cities in Area 5	1.9634	2.6081	1.9458	3.3204	3.3315	5.7415									
		Designated cities	0.7588	2.4051	0.9297	2.4292	1.1262	3.7941									
		Tokyo 23 wards	0.5107	0.9706	0.4116	1.4266	0.6408	3.2091									
		Other cities in Area 1	1.6632	3.9664	1.6403	5.5300	2.6249	10.6872									
		Other cities in Area 2	1.4032	2.1662	1.8697	5.1328	2.2987	7.6522									
Three generations	One worker	Other cities in Area 3	1.2855	3.5623	1.7045	4.7382	1.7088	7.1121									
		Other cities in Area 4	1.9773	3.5253	2.0801	5.5265	1.6349	6.8032									
		Other cities in Area 5	2.3719	3.7738	2.2888	6.2463	2.8376	9.4862									
		Designated cities			0.2076	0.1594		0.3790	0.8113	0.1225							
		Tokyo 23 wards															
		Other cities in Area 1		0.2426		1.3432	1.2245	0.2588	2.8248	2.3554	0.3688						
	Multiple workers	Other cities in Area 2				1.0688	1.0801		1.3098	2.0198	0.3806						
		Other cities in Area 3				0.6561	0.8793		0.5980	1.5366	0.5526						
		Other cities in Area 4				1.2133	1.4767	0.2264	1.6830	1.4874	0.3937						
		Other cities in Area 5				1.2683	0.7600	0.1880	2.2085	2.4438	0.5939						
		Designated cities				0.5965	0.4205	0.1282	1.1595	0.6383	0.2916						
		Tokyo 23 wards				0.4401	0.4862	0.3133	0.4862	0.3133	0.1951						
Other	One worker	Other cities in Area 1				1.3544	1.1827	0.6795	2.4289	2.4776	0.8807						
		Other cities in Area 2				1.1315	1.1633	0.4159	2.7298	2.0215	0.4963						
		Other cities in Area 3				1.0265	0.7321	0.2636	1.7814	1.8633	0.5876						
		Other cities in Area 4				0.9348	1.3897	1.3979	0.6077	3.4487	2.1259	0.6653					
		Other cities in Area 5				0.8880	2.1462	1.4047	0.4624	2.5213	2.6619	0.7057					
		Designated cities				0.0770	0.0396		0.1424	0.1046	0.1587	0.1656					
	Multiple workers	Tokyo 23 wards									0.1253						
		Other cities in Area 1				0.2409	0.1496	0.2644	0.2146	0.6177	0.3965						
		Other cities in Area 2				0.2850	0.1111	0.2924	0.1859	0.8264	0.4571						
		Other cities in Area 3				0.3654	0.1780	0.2571	0.1368	0.6698	0.3393						
		Other cities in Area 4				0.4886	0.2718	0.3076	0.1753	0.9132	0.4028						
		Other cities in Area 5				0.4542	0.3704	0.4274	0.3458	1.0670	0.6489						
Other	One worker	Designated cities				0.4022	0.0618	0.0906	0.4815	0.0991	0.0831						
		Tokyo 23 wards				0.1703											
		Other cities in Area 1				0.4012	0.3081	0.3141	0.6443	0.1787	0.1886	1.6681	0.5781	0.4351			
		Other cities in Area 2				0.1313	0.2953	0.1955	0.9084	0.2676	0.1900	2.3363	0.6007	0.4698			
		Other cities in Area 3				0.4184	0.2653	0.2403	0.4423	0.1383	0.1726	1.8144	0.3210	0.2866			
		Other cities in Area 4				0.2318	0.6525	0.3166	1.2748	0.2939	0.2494	2.3053	0.8835	0.6790			
	Multiple workers	Other cities in Area 5				0.4963	0.3756	0.3494	0.7707	0.7707	0.3451	0.3518	2.4465	0.7868	0.6068		

Table 4(a): Disproportionality of the NSFIE sample with provided sampling weights by population group in 2009 (single households)

NSFIE 2009			Renter			Home-owner				
			-40	41-60	61-	-40	41-60	61-		
Single male	No worker	Designated cities	0.1217			0.3421			2.0361	
		Tokyo 23 wards								
		Other cities in Area 1							0.7059	
		Other cities in Area 2								
		Other cities in Area 3								
		Other cities in Area 4								
	Other cities in Area 5	0.8674	1.1581							
	One worker	Designated cities	1.0491	1.1762	0.6715	1.9683	2.3911	1.9470		
		Tokyo 23 wards	1.6197	0.5982		2.7851				
		Other cities in Area 1	0.7648	0.6674		1.0895	1.3675			
		Other cities in Area 2	1.0943	0.6025		1.5285	1.6231			
		Other cities in Area 3	1.0857	0.6670		1.3432	1.0936			
Other cities in Area 4		1.2521	1.0470	0.8413		1.3761	1.7124		0.9304	
Single female	No worker	Designated cities	0.1901			0.9529			1.9605	
		Tokyo 23 wards								
		Other cities in Area 1							0.8348	
		Other cities in Area 2							0.8285	
		Other cities in Area 3								
		Other cities in Area 4								
	Other cities in Area 5	0.8278	1.3574							
	One worker	Designated cities	0.8149	1.2090	0.9763	1.9062	1.5544	1.4807		
		Tokyo 23 wards	1.4020	1.2533		1.3906				
		Other cities in Area 1	1.1201	0.8184		2.5435	1.7129			
		Other cities in Area 2	1.0820	0.8234		1.0798	0.0625		1.3302	1.1461
		Other cities in Area 3	0.9863	1.0422		1.6470	1.2945			
Other cities in Area 4		1.3201	0.9792	1.6004		0.3341	1.3679		1.0247	
Other cities in Area 5	1.0066	0.5161	1.2056							

Table 4(b): Disproportionality of the NSFIE sample with provided sampling weights by population group in 2009 (two-or-more-person households)

NSFIE 2009			Renter			Home-owner (small)			Home-owner (large)			
			-40	41-60	61-	-40	41-60	61-	-40	41-60	61-	
Two-or-more-person with no worker		Designated cities	0.1687	0.1416	1.0178	0.3395	1.2430	0.3185	1.7122			
		Tokyo 23 wards			0.3734		1.3756		1.2525			
		Other cities in Area 1		0.2003	0.9193	0.2963	1.2987	0.6627	1.8573			
		Other cities in Area 2	0.1130	0.2597	0.6365	0.2878	0.9427	0.6324	1.4231			
		Other cities in Area 3		0.2106	0.9739	0.3194	0.8616	0.4960	1.4248			
		Other cities in Area 4	0.1880	0.2569	0.5721	0.2333	0.8739	0.5651	1.4242			
		Other cities in Area 5	0.1334	0.2305	0.5811	0.2811	0.9353	0.5651	1.5743			
Couple only	One worker	Designated cities	1.1039	1.1291	0.9404	0.6646	1.6359	1.1492	1.7040	1.4018		
		Tokyo 23 wards	0.9500	0.8474	0.9298	0.9707	1.3039	1.0968	1.3830	1.4670		
		Other cities in Area 1	0.7132	0.6763	0.9616	1.1477	1.3457	1.2824	2.3099	1.7826		
		Other cities in Area 2	0.5688	0.5523	0.4600	1.3628	1.2011	1.0260	1.9129	1.5215		
		Other cities in Area 3	0.8791	0.9515	1.2268	0.5717	1.0192	0.9516	1.4696	1.3191		
		Other cities in Area 4	0.4844	0.9311	0.6899	0.6029	0.9487	0.6785	1.6410	1.2429		
		Other cities in Area 5	0.6909	1.0185	0.7739		1.1255	0.8592	2.2359	1.4096		
	Multiple workers	Designated cities	0.6309	1.1251	1.3142	0.5947	0.9053	0.8481	2.3493	1.6795	1.2391	
		Tokyo 23 wards	0.6033	0.5922	0.6628		1.3367	1.0188		1.4036		
		Other cities in Area 1	0.8099	0.5817	0.9215	0.7405	1.1934	1.2815	1.6001	2.1403	2.2353	
		Other cities in Area 2	0.5173	0.4498	0.4766	0.9476	1.0726	1.0427	1.0448	1.9376	1.1311	
		Other cities in Area 3	0.6274	0.7029	0.6995	0.7205	0.9772	0.8158	0.7891	1.3998	1.1395	
		Other cities in Area 4	0.7327	0.9732	0.7103	0.5309	1.0775	0.8661	1.2288	1.7850	1.2014	
		Other cities in Area 5	0.8765	0.9619	0.6402	0.7401	1.0986	0.8093	1.1704	1.8421	1.4854	
Single parent with child(ren)	One worker	Designated cities	1.2111	1.7555		0.8927	3.4533	3.1783	4.9314			
		Tokyo 23 wards	0.9534	1.9838			3.9090					
		Other cities in Area 1	0.7151	1.1669			3.1969					
		Other cities in Area 2	0.5422	0.7428	1.5264		1.4535					
		Other cities in Area 3	0.7517	1.1949			1.5459					
		Other cities in Area 4	0.8269	1.2243	1.3054		2.2552					
		Other cities in Area 5	1.0290	1.1304	1.7417		2.4282					
Parents with child(ren)	One worker	Designated cities	1.5959	2.4297	1.1960	2.7803	1.4556	3.1952				
		Tokyo 23 wards	1.4251	1.4440	1.0359	1.9271		3.4155				
		Other cities in Area 1	1.2123	1.4759	1.2962	2.4853	1.7318	3.6553				
		Other cities in Area 2	0.7438	0.9699	1.2386	2.4118	1.4824	3.1654				
		Other cities in Area 3	1.0469	1.2409	1.3499	2.4950	1.1620	2.7726				
		Other cities in Area 4	1.0802	1.5104	1.0519	2.1167	1.1673	3.0163				
		Other cities in Area 5	1.1584	1.5716	1.1482	1.9169	1.8456	3.3352				
	Multiple workers	Designated cities	1.2181	4.0510	1.5240	4.0666	1.7445	6.2160				
		Tokyo 23 wards	1.4247	2.8410	1.0099	4.2693	1.8053	9.1317				
		Other cities in Area 1	1.1842	2.8183	1.1864	3.9655	1.7318	7.2745				
		Other cities in Area 2	0.9620	1.4908	1.2453	3.5860	1.4211	4.8191				
		Other cities in Area 3	0.9177	2.7558	1.1736	3.2785	1.0782	4.6430				
		Other cities in Area 4	1.1818	2.1928	1.2418	3.5492	0.9865	4.2021				
		Other cities in Area 5	1.3163	2.2151	1.2469	3.5557	1.4836	5.1445				
Three generations	One worker	Designated cities			0.9476	0.3373		0.5316	1.4963	0.2064		
		Tokyo 23 wards										
		Other cities in Area 1		0.1748		1.0214	0.8567	0.1905	1.8401	1.4752	0.2237	
		Other cities in Area 2				0.7000	0.7159		1.2657	1.3177	0.2553	
		Other cities in Area 3				0.4100	0.5692		0.4305	0.9319	0.3844	
		Other cities in Area 4				1.0435	1.1120	0.1403	1.2383	1.0133	0.1964	
		Other cities in Area 5		0.2519		0.4552	0.4158	0.1117	1.0297	1.3113	0.2660	
	Multiple workers	Designated cities		0.7369		0.9244	0.6099	0.1488	1.8416	1.0174	0.4111	
		Tokyo 23 wards		0.9252			1.2892		1.2914	0.8287	0.5702	
		Other cities in Area 1		0.4857		0.9207	0.7788	0.4382	1.5289	1.6395	0.5566	
		Other cities in Area 2		0.6614		0.9532	0.7628	0.2749	1.8725	1.3222	0.3326	
		Other cities in Area 3		0.6498		0.5985	0.4462	0.1785	0.9695	1.0501	0.3524	
		Other cities in Area 4		0.7126		0.8948	0.9286	0.3852	2.2065	1.4289	0.4391	
		Other cities in Area 5		0.5531		0.9806	0.7656	0.2454	1.1628	1.3390	0.3668	
Other	One worker	Designated cities								0.2992		
		Tokyo 23 wards		0.1447	0.0965		0.3509	0.2232		0.2342	0.3981	
		Other cities in Area 1		0.2067	0.1109		0.1934	0.1629		0.4076	0.3019	
		Other cities in Area 2		0.2301	0.1056		0.2113	0.1232		0.5350	0.2793	
		Other cities in Area 3		0.2875	0.1466		0.2085	0.1006		0.4580	0.2247	
		Other cities in Area 4		0.2779	0.1459		0.1891	0.0965		0.5632	0.2550	
		Other cities in Area 5		0.2782	0.2217		0.2503	0.1864		0.5830	0.3459	
	Multiple workers	Designated cities				0.6549	0.1474	0.2171	0.8534	0.1677	0.2020	
		Tokyo 23 wards				0.2546						
		Other cities in Area 1		0.2965	0.2379	0.2170	0.5531	0.1327	0.1412	0.9812	0.4066	0.3109
		Other cities in Area 2		0.0646	0.2067	0.1369	0.6928	0.1756	0.1393	1.3251	0.3753	0.2905
		Other cities in Area 3		0.3085	0.1983	0.1997	0.3636	0.0911	0.1372	1.1307	0.2249	0.1970
		Other cities in Area 4		0.1278	0.4217	0.2151	0.6968	0.1922	0.1708	1.3993	0.5415	0.4294
		Other cities in Area 5		0.2732	0.1956	0.1994	0.4624	0.1909	0.2011	1.1241	0.4121	0.3146

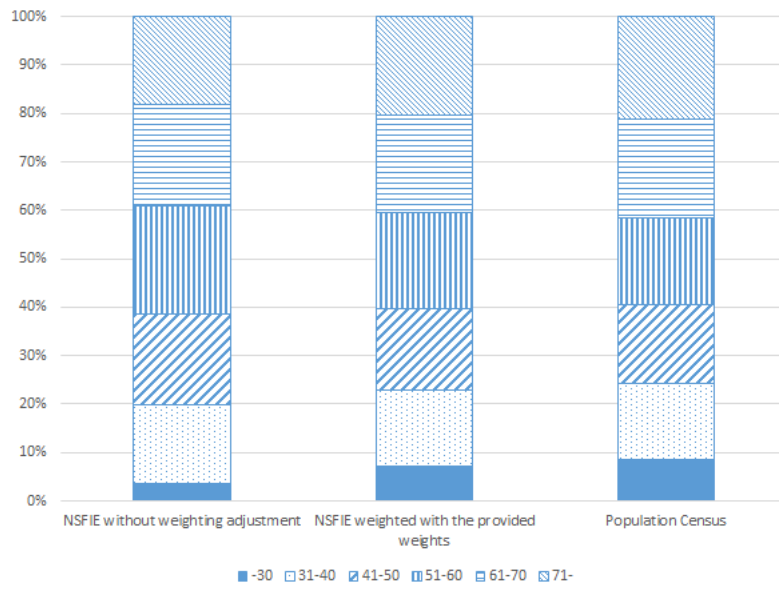


Figure 1(a): Household share of each age category in 2009

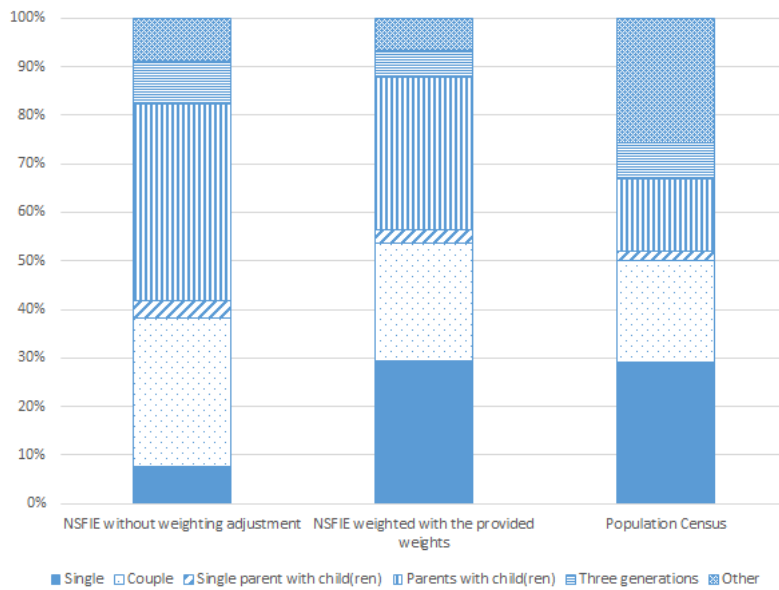


Figure 1(b): Population share of each household type in 2009

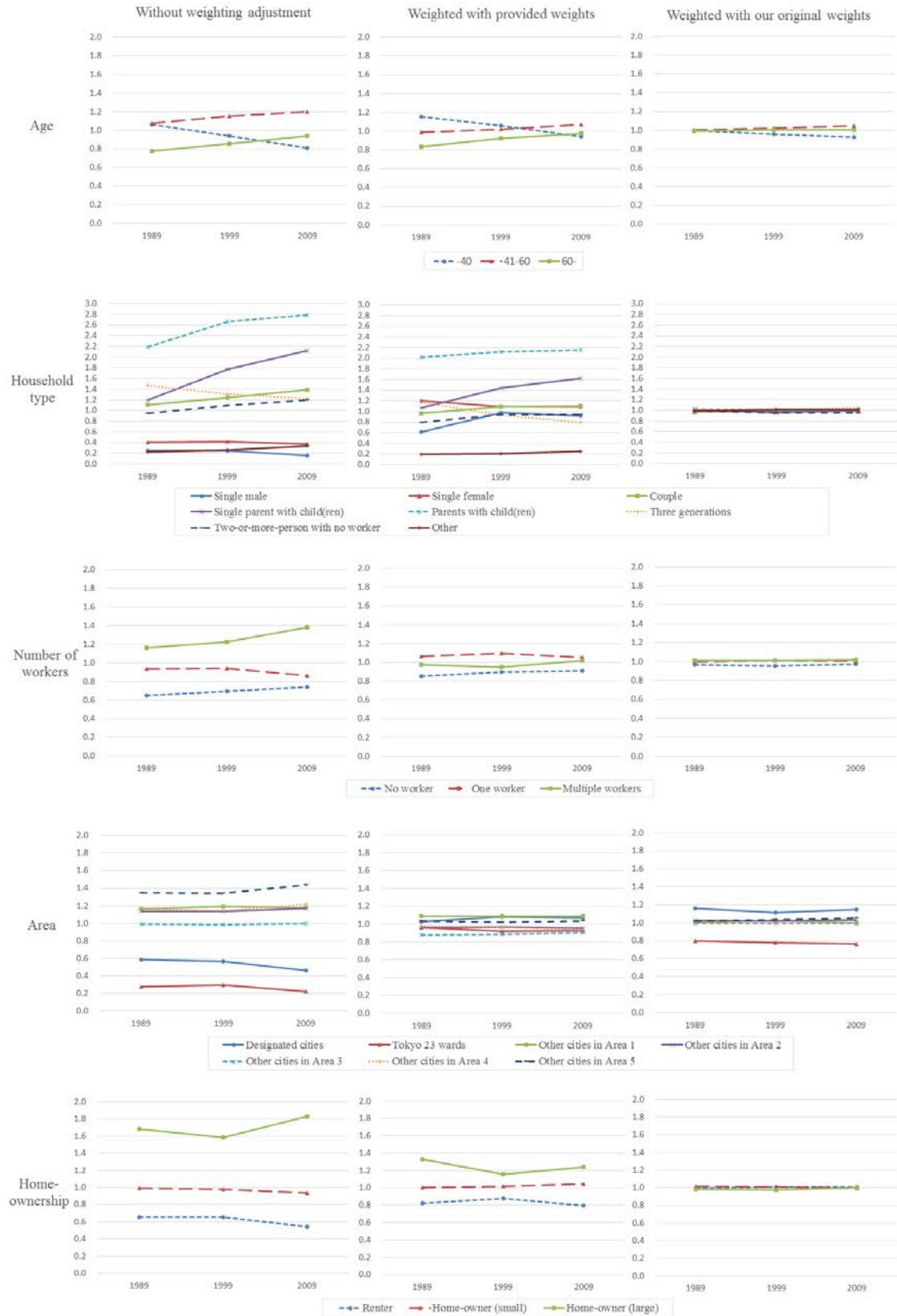


Figure 2: Disproportionality of the NSFIE sample by household characteristic, 1989-2009

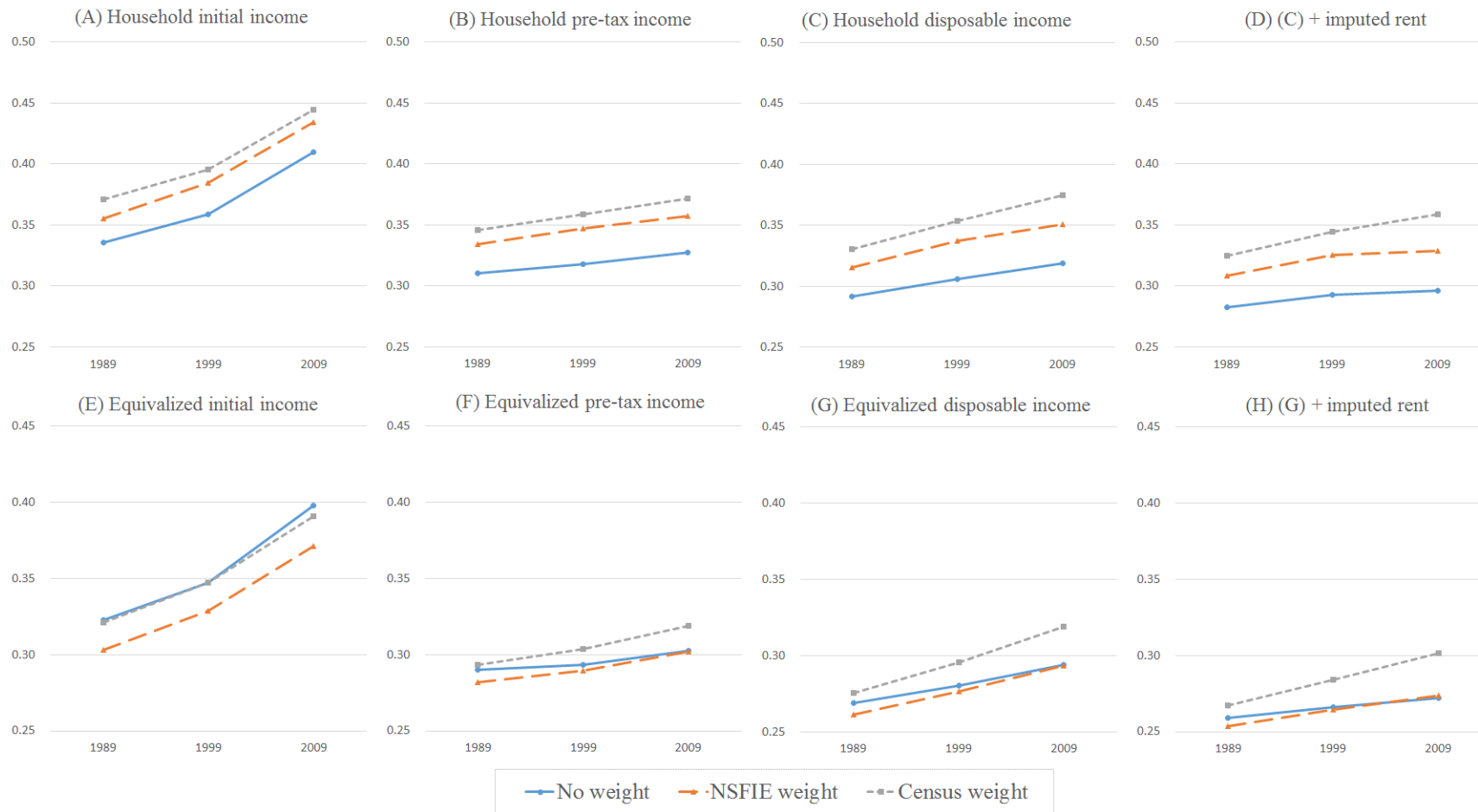


Figure 3: Gini coefficient by sampling weight, 1989-2009

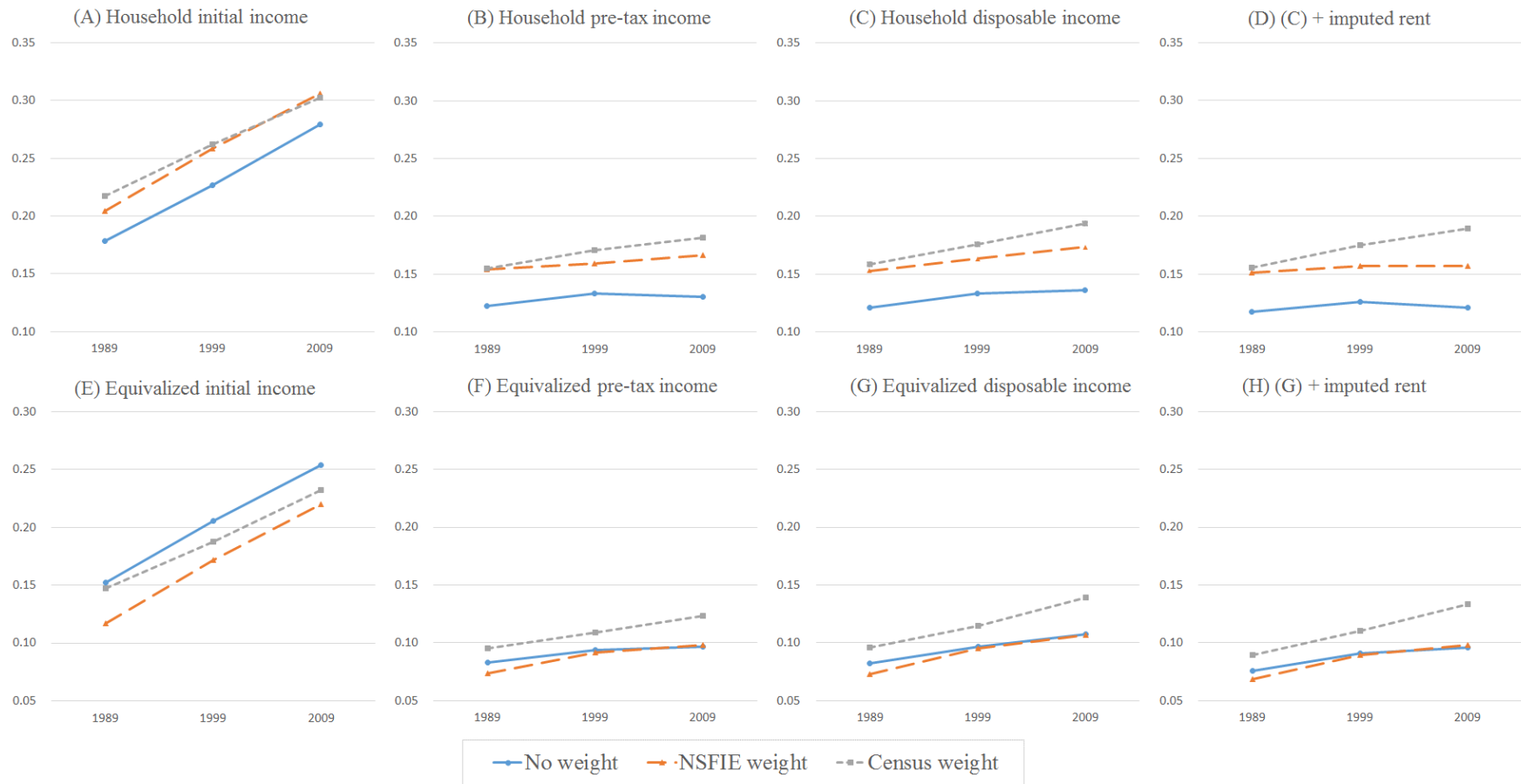


Figure 4: Relative poverty rate by sampling weight, 1989-2009

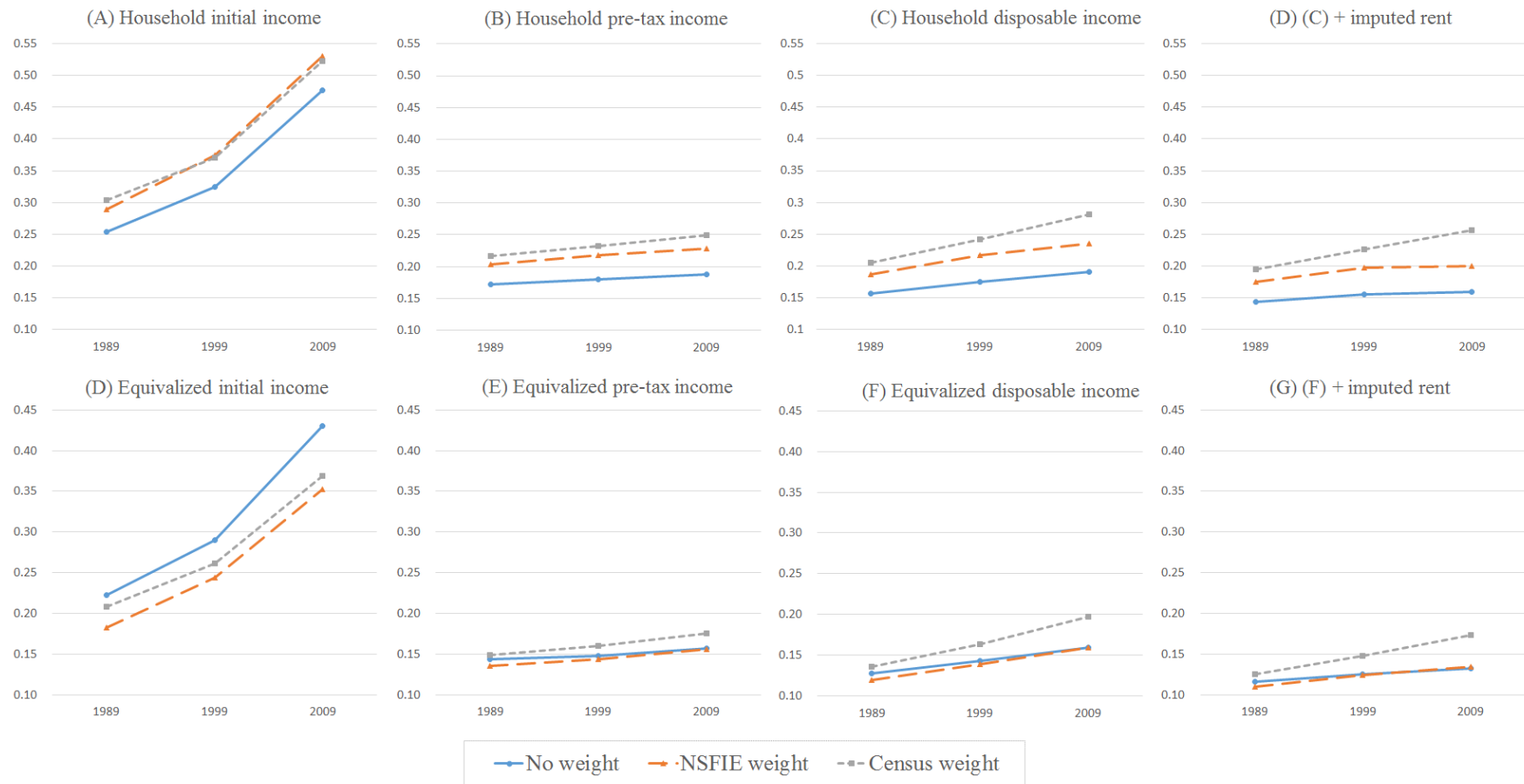


Figure 5: MLD by sampling weight, 1989–2009

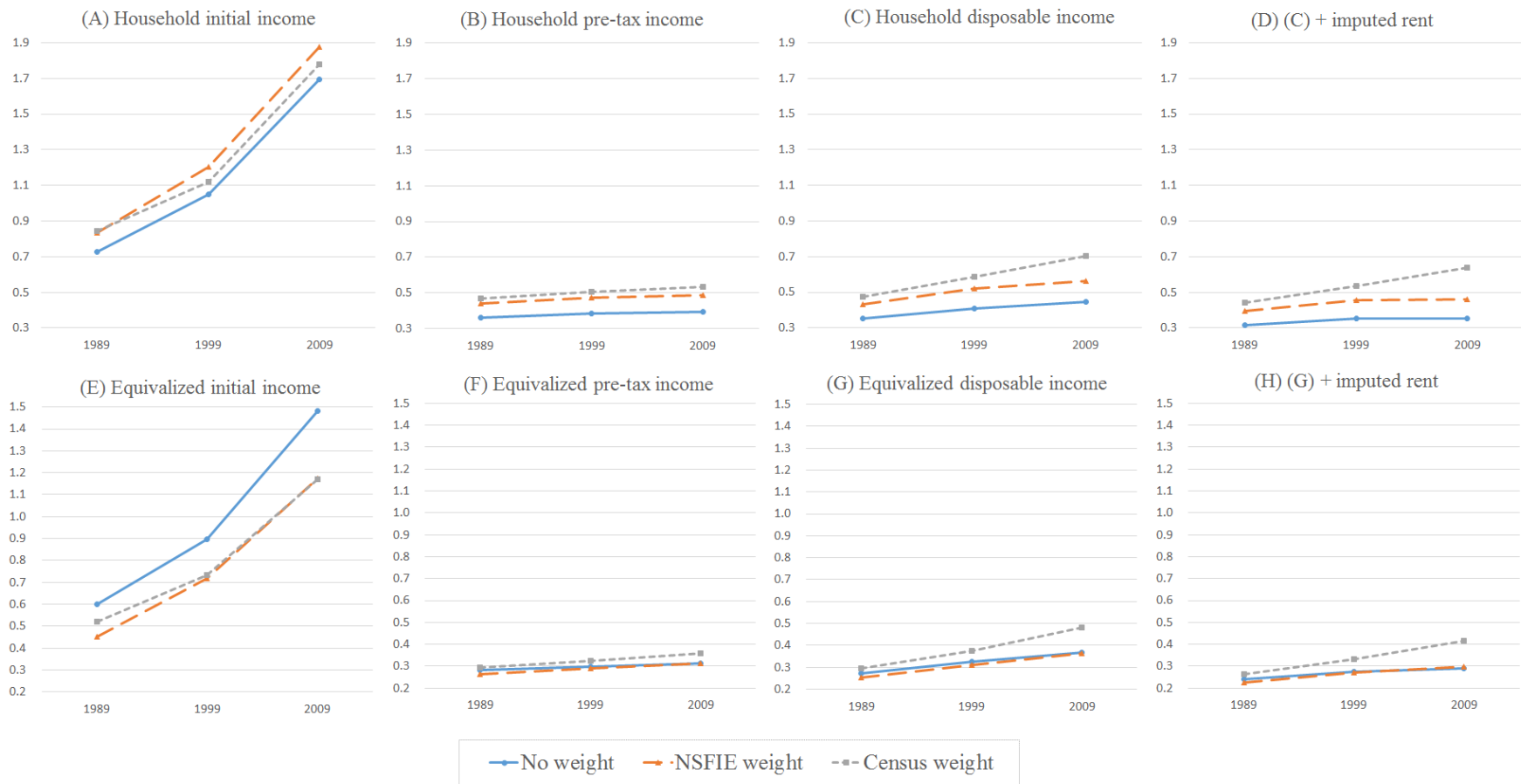


Figure 6: LV by sampling weight, 1989–2009

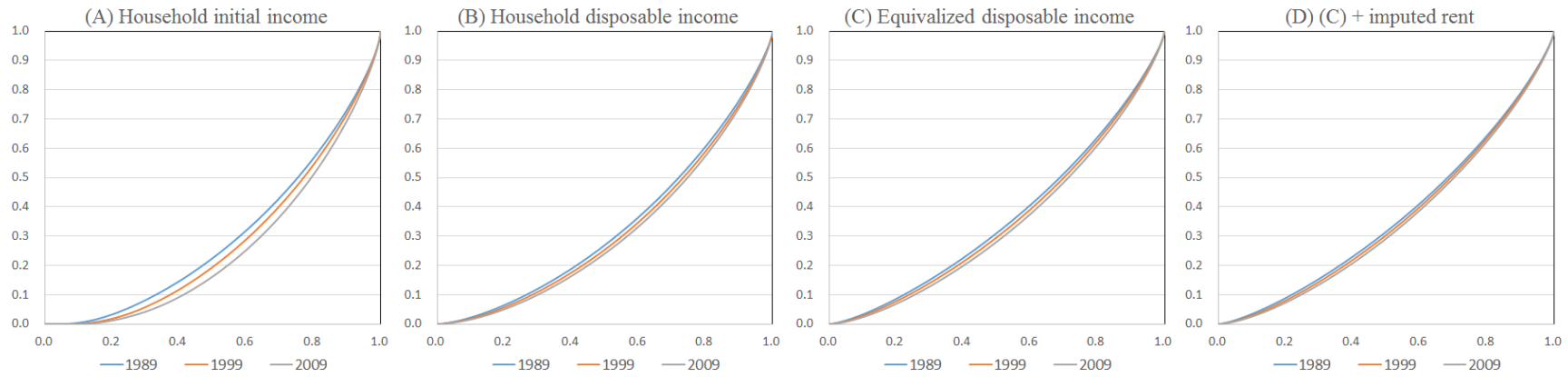


Figure 7: Lorenz curves, 1989–2009

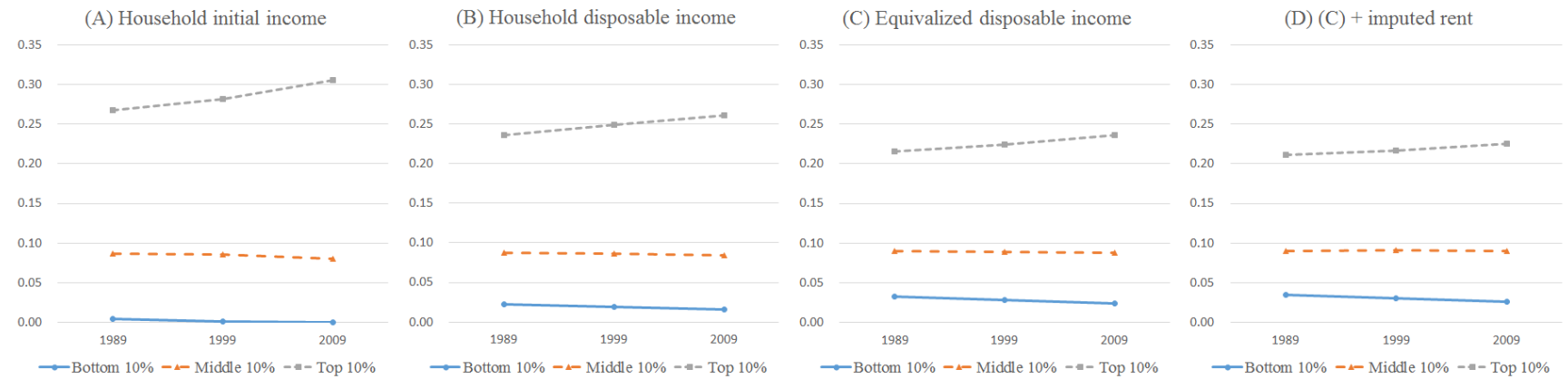


Figure 8: Top, middle, and bottom 10% shares, 1989–2009

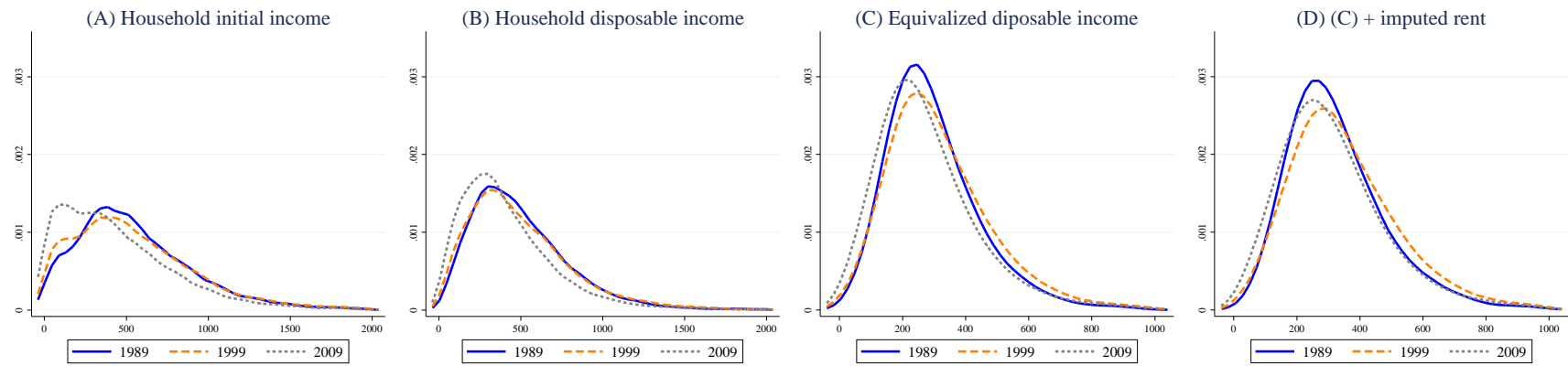


Figure 9: Kernel density of income, 1989–2009

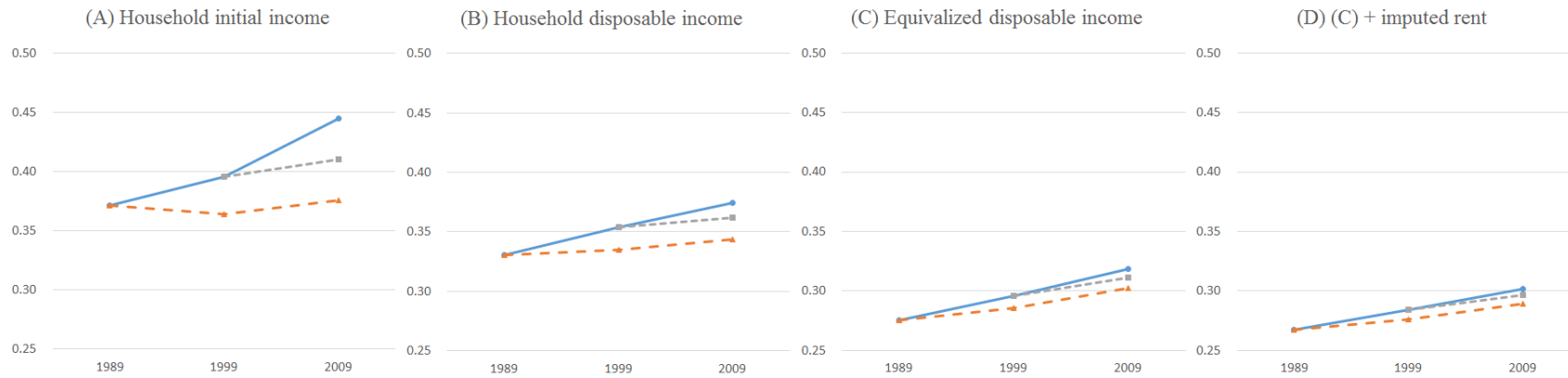


Figure 10(a): Gini coefficient with fixed household group shares (weighting cells)

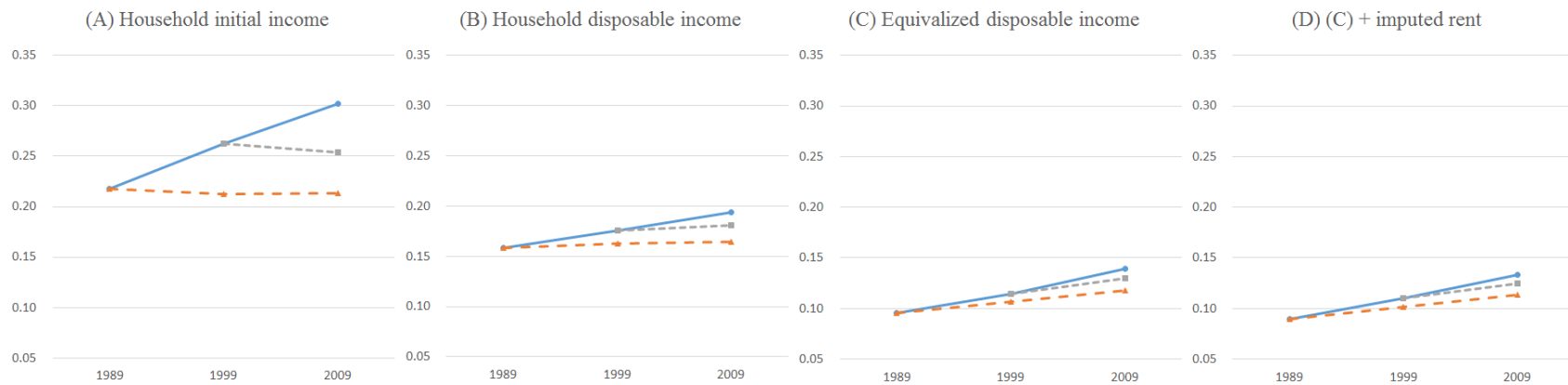


Figure 10(b): Relative poverty rate with fixed household group shares (weighting cells)

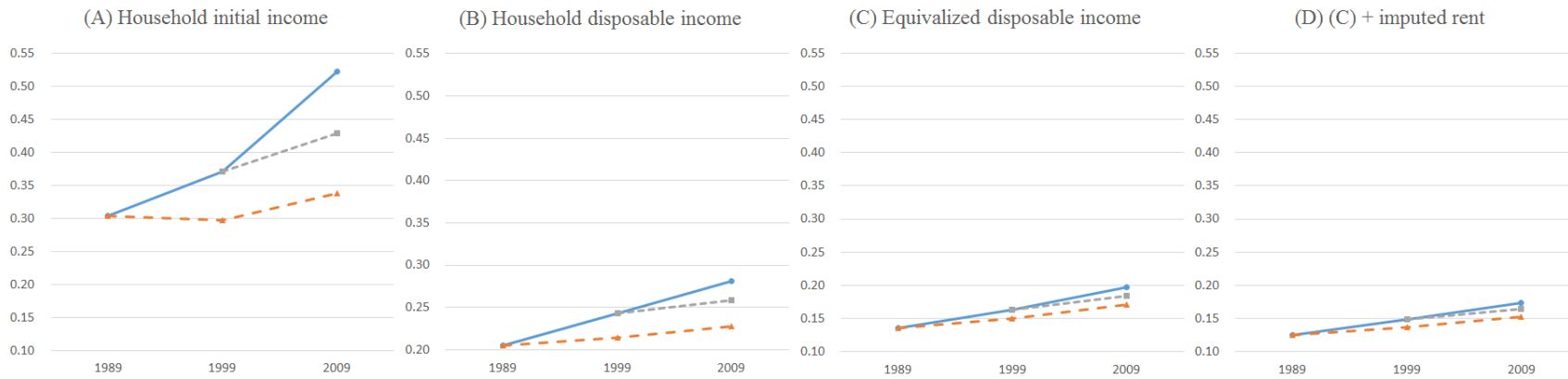


Figure 10(c): MLD with fixed share of household group (weighting cell)

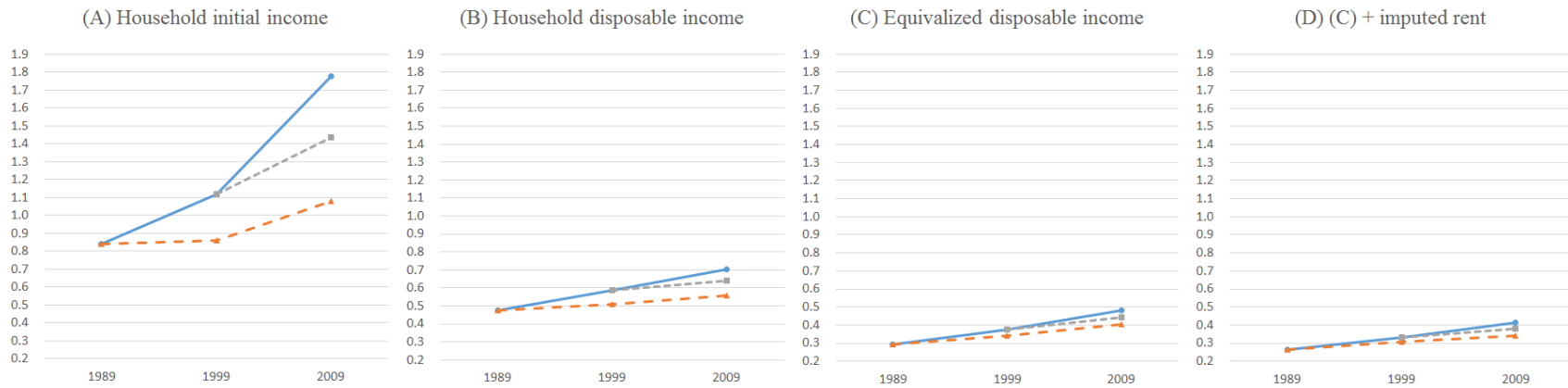


Figure 10(d): LV with fixed share of household group (weighting cell)

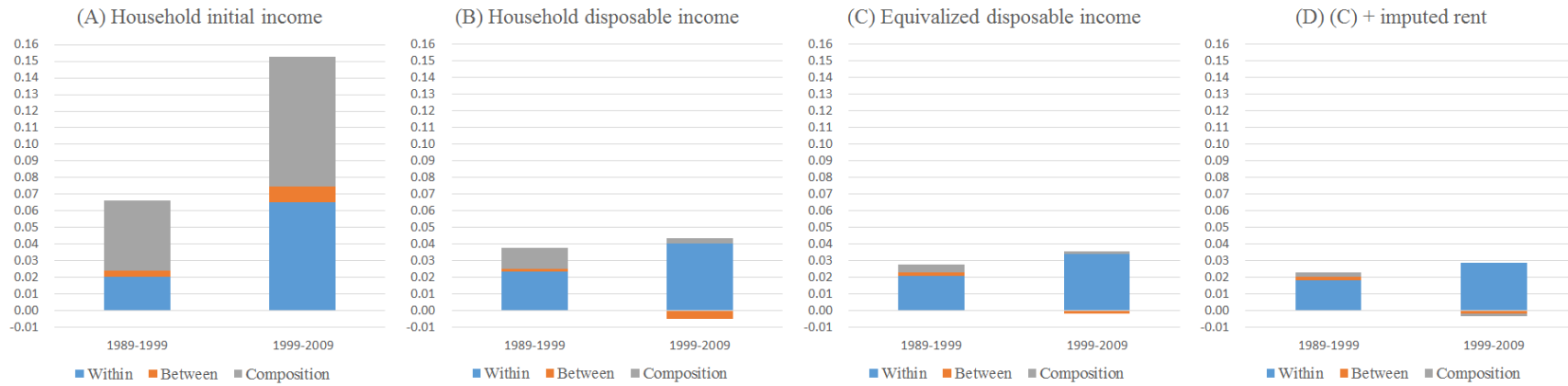


Figure 11(a): Decomposition of MLD (age)

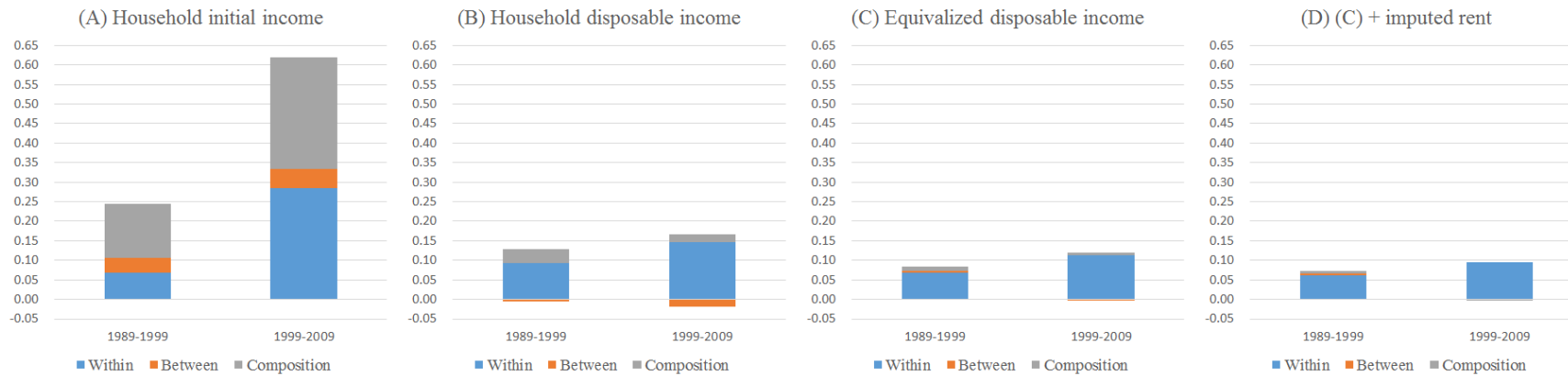


Figure 11(b): Decomposition of LV (age)

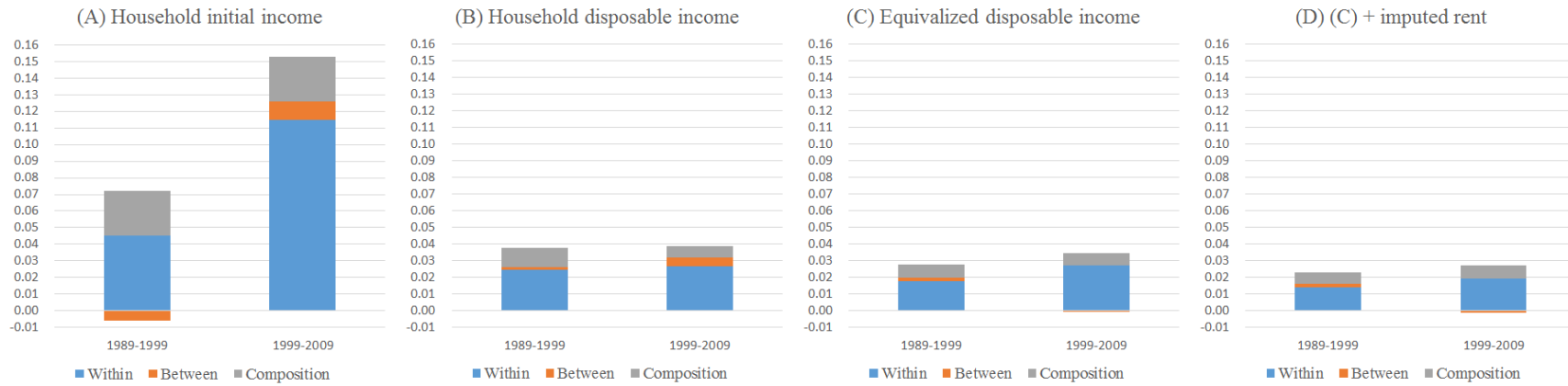


Figure 12(a): Decomposition of MLD (household type)

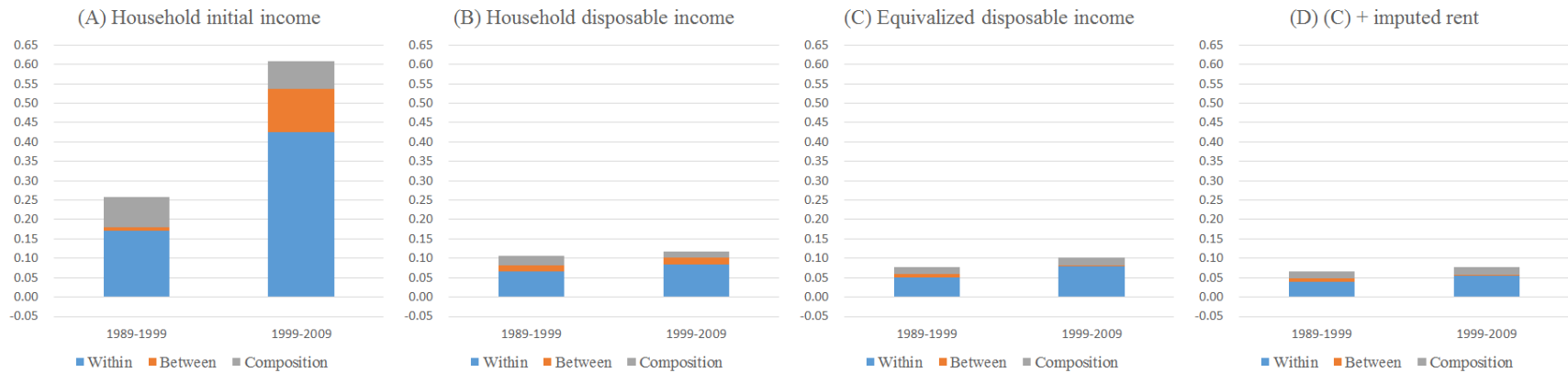


Figure 12(b): Decomposition of LV (household type)

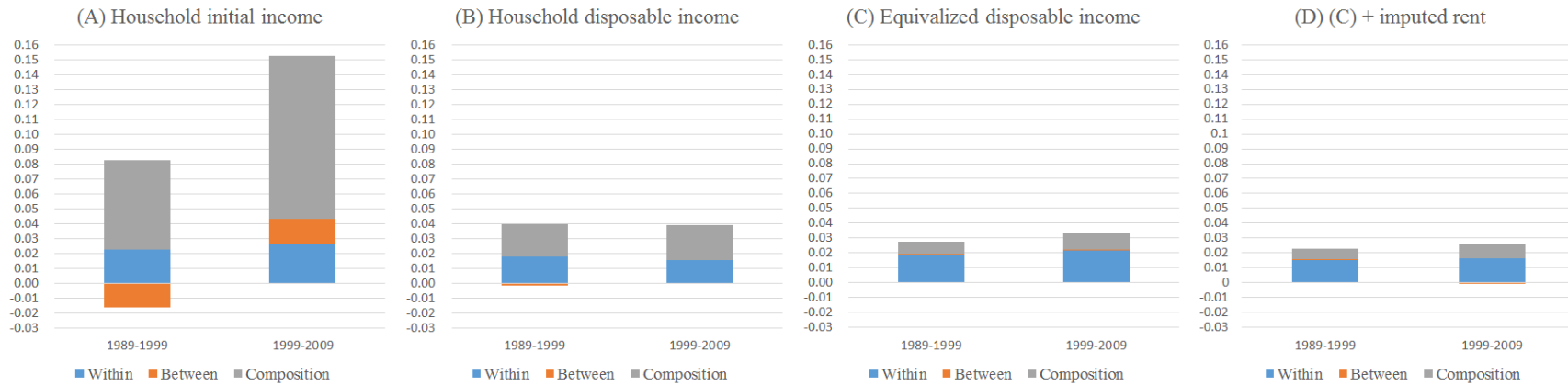


Figure 13(a): Decomposition of MLD (number of workers)

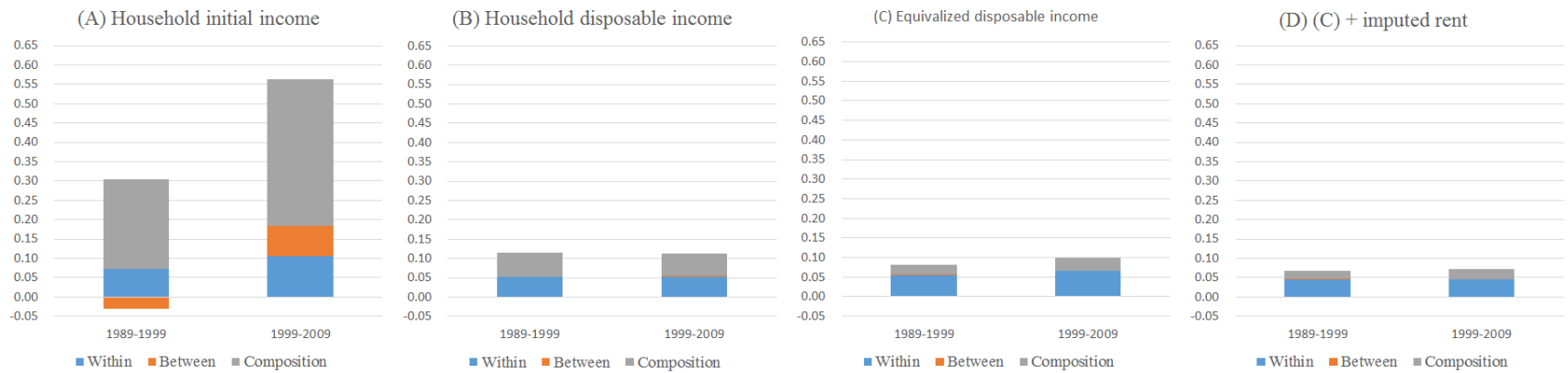


Figure 13(b): Decomposition of LV (number of workers)

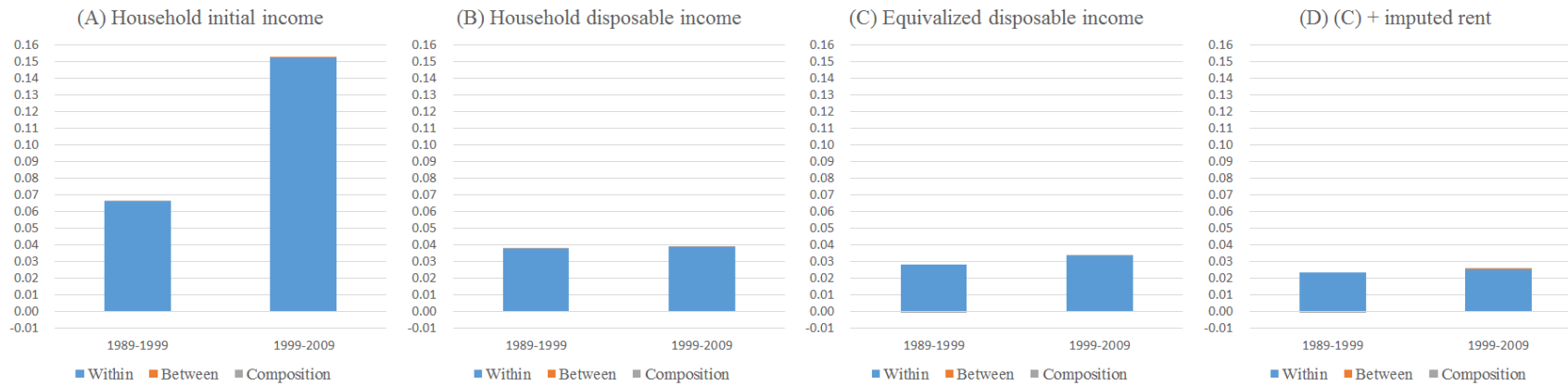


Figure 14(a): Decomposition of MLD (area)

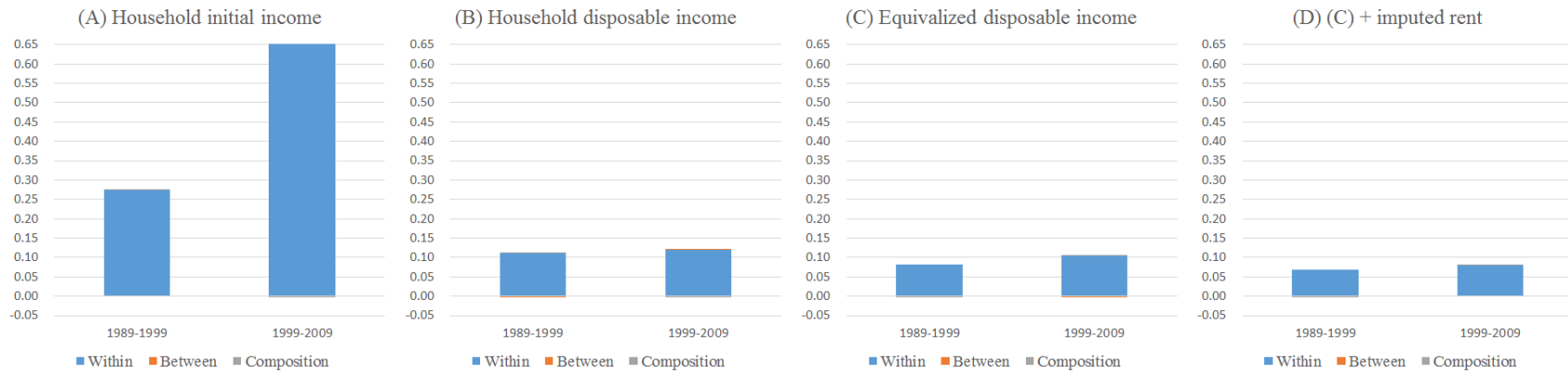


Figure 14(b): Decomposition of LV (area)

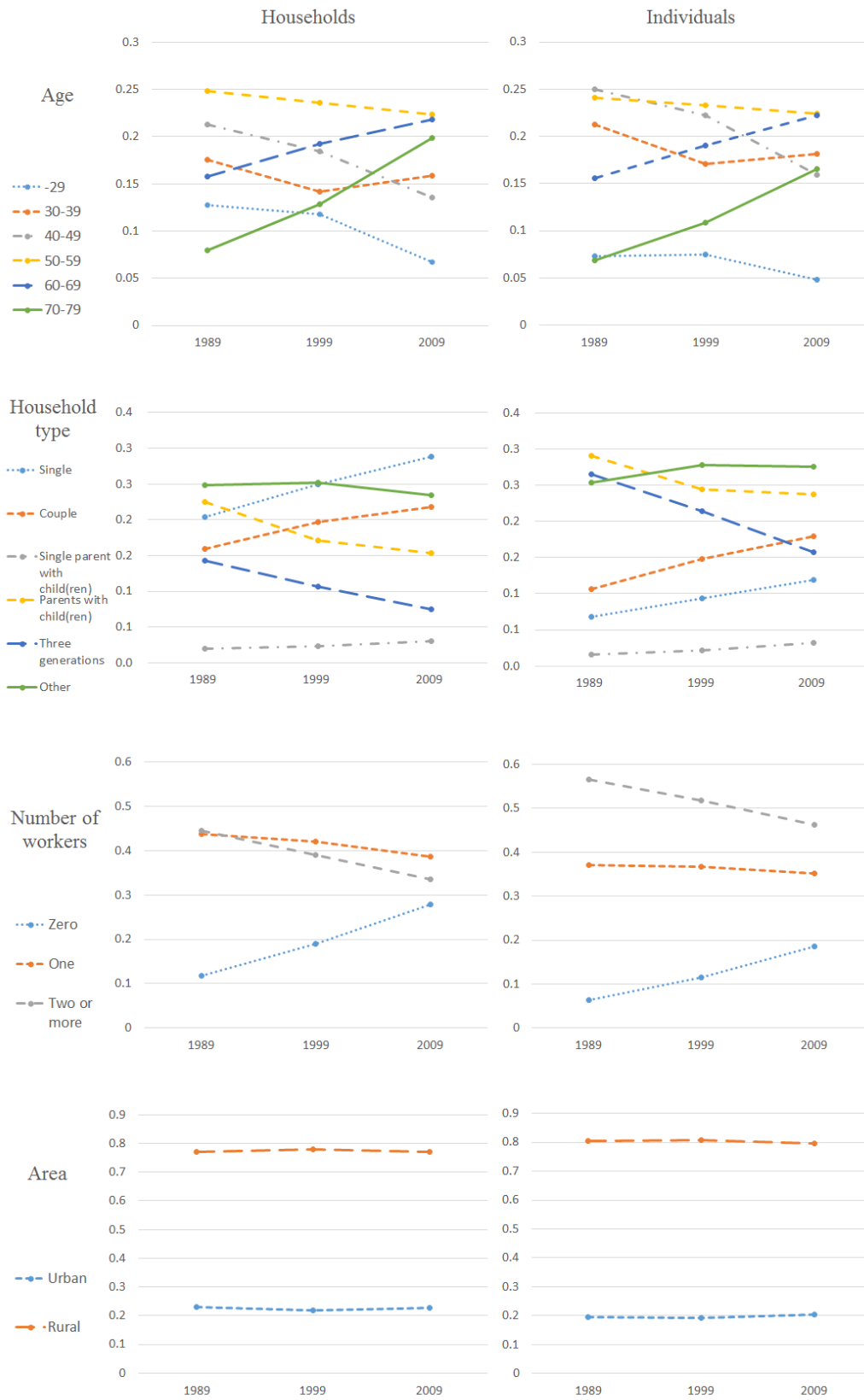


Figure 15: Population share by category

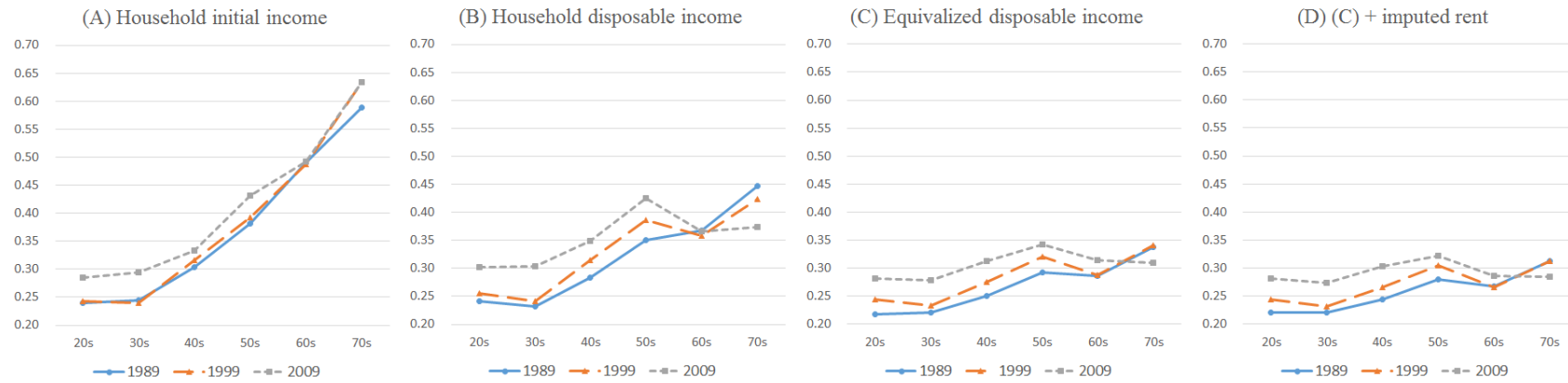


Figure 16(a): Gini coefficient by age group

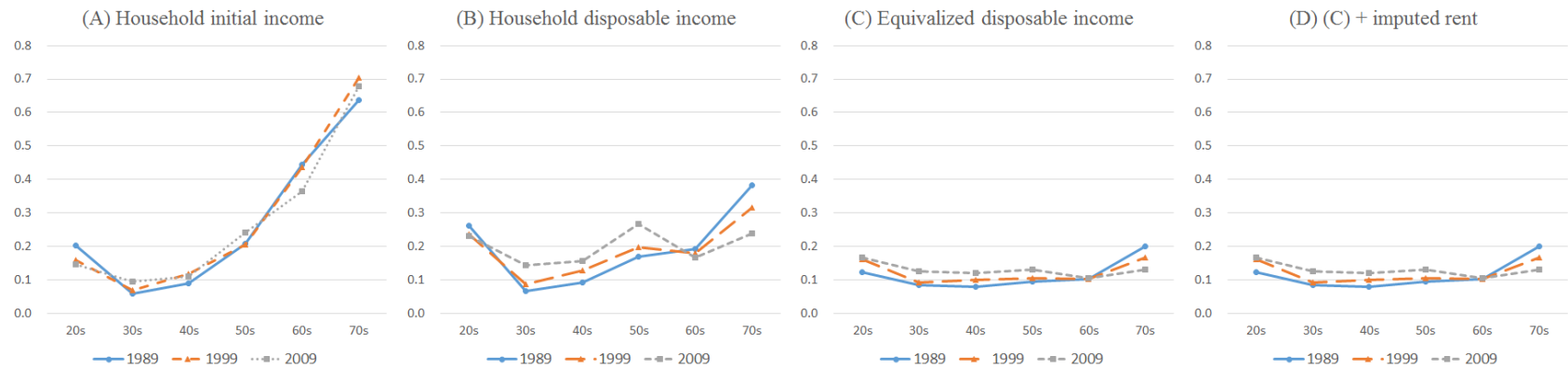


Figure 16(b): Relative poverty rate by age group

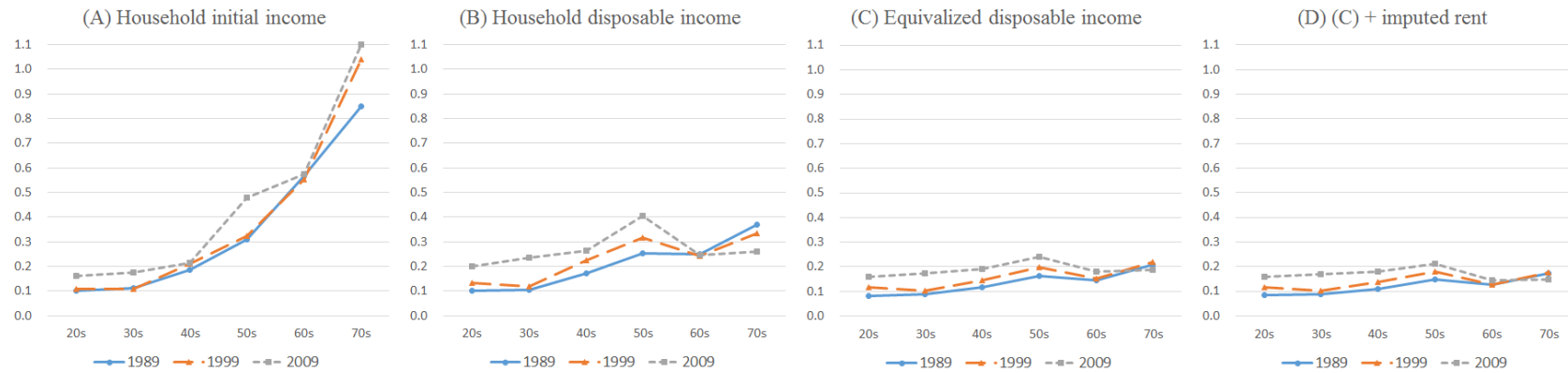


Figure 16(c): MLD by age group

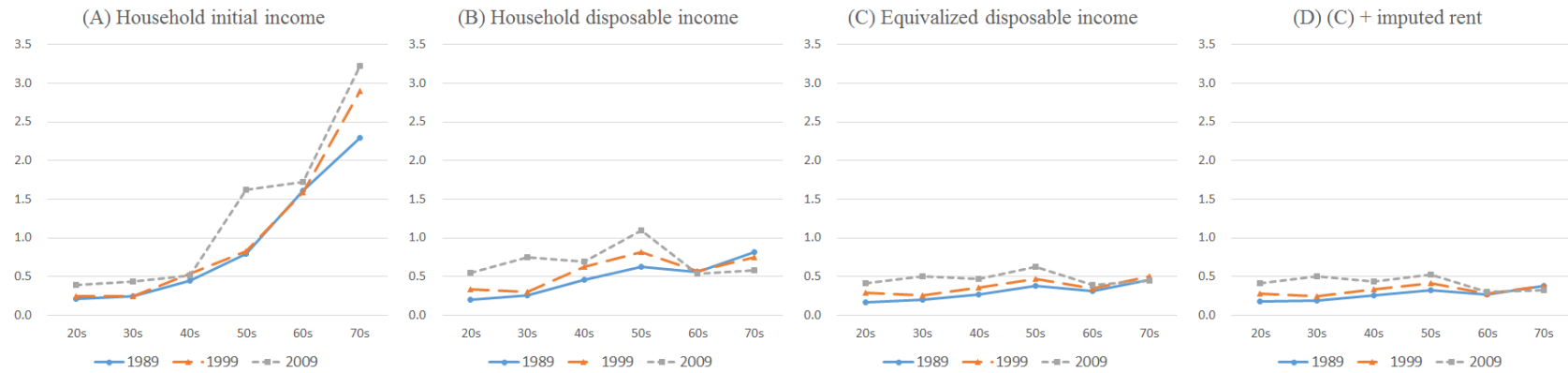


Figure 16(d): LV by age group

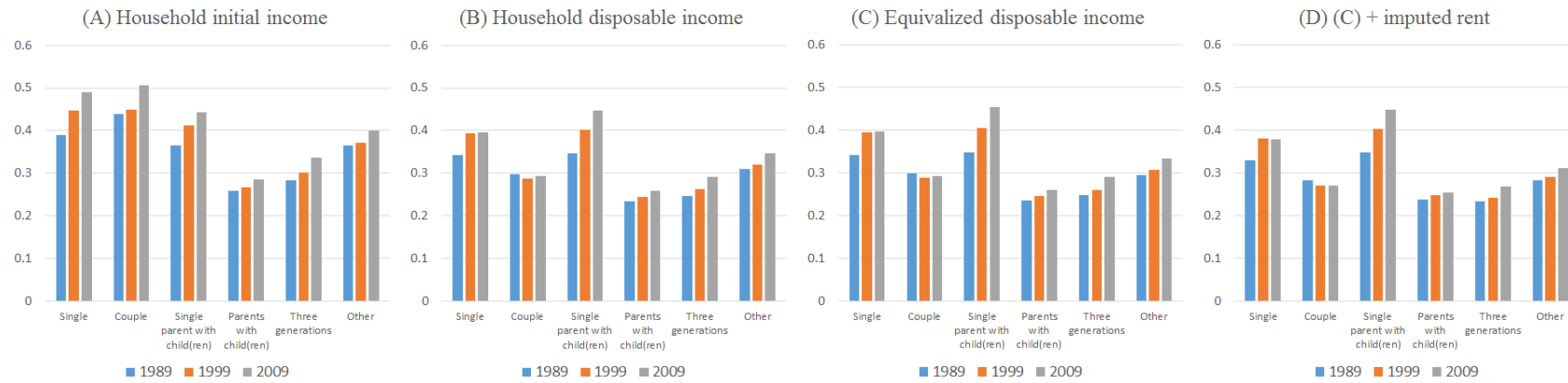


Figure 17(a): Gini coefficient by household type

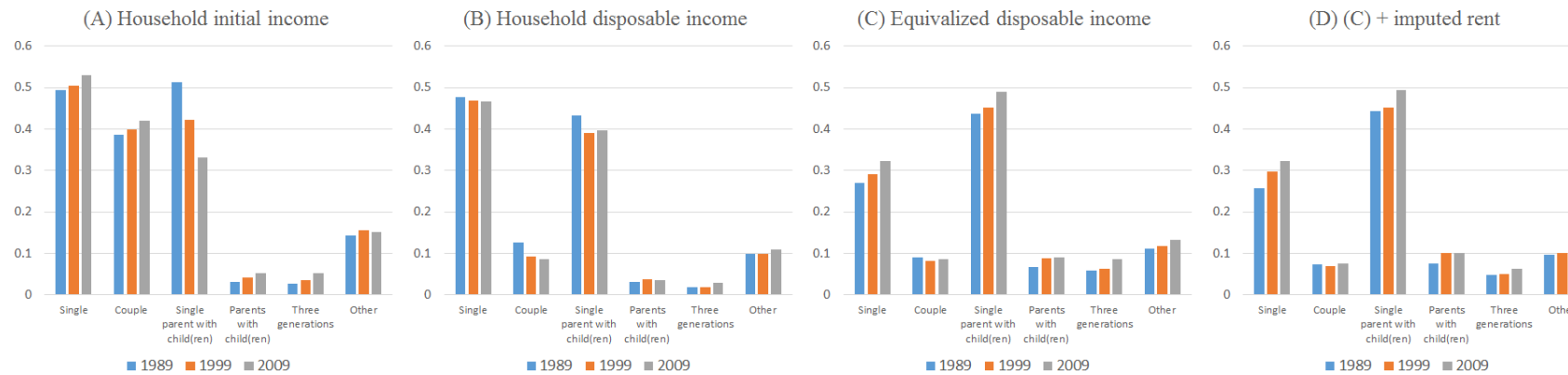


Figure 17(b): Relative poverty rate by household type

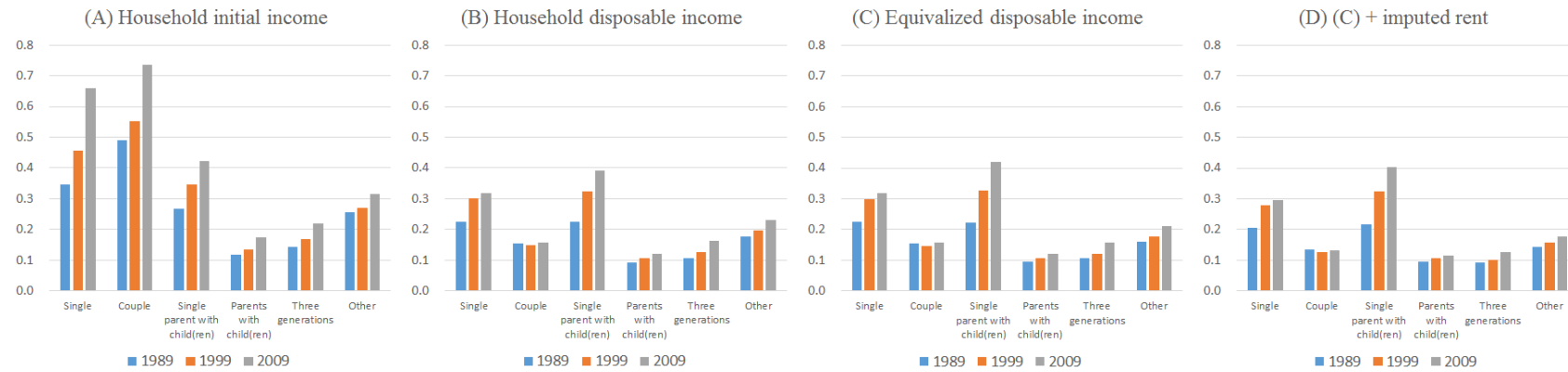


Figure 17(c): MLD by household type

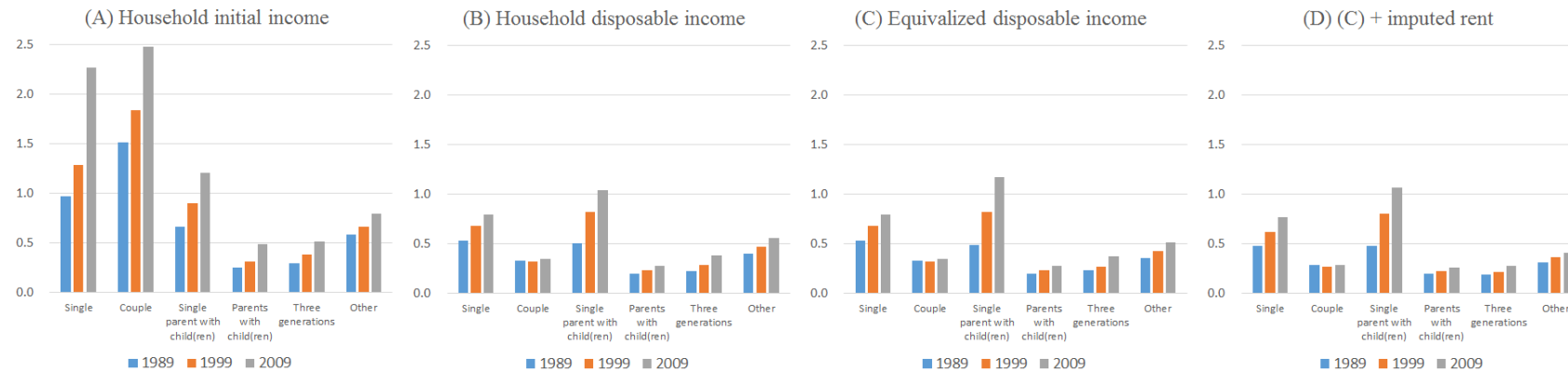


Figure 17(d): LV by household type



Figure 18(a): Gini coefficient by number of workers

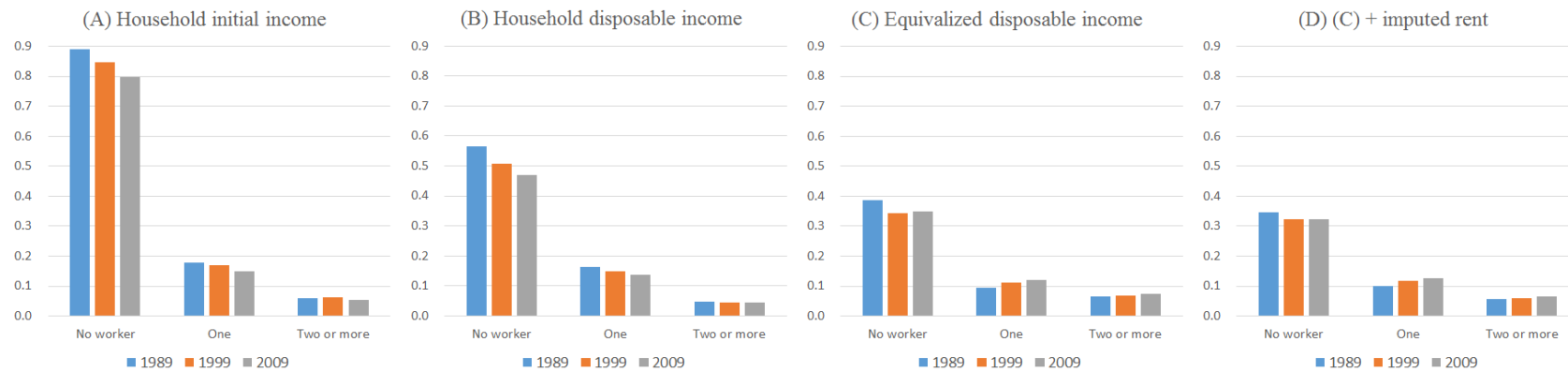


Figure 18(b): Relative poverty rate by number of workers



Figure 18(c): MLD by number of workers



Figure 18(d): LV by number of workers

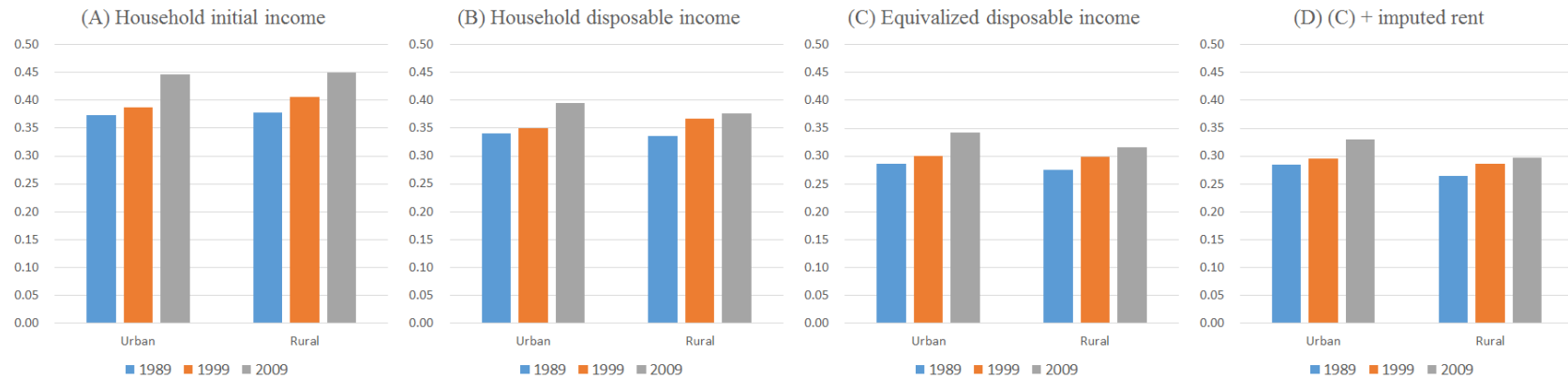


Figure 19(a): Gini coefficient by area

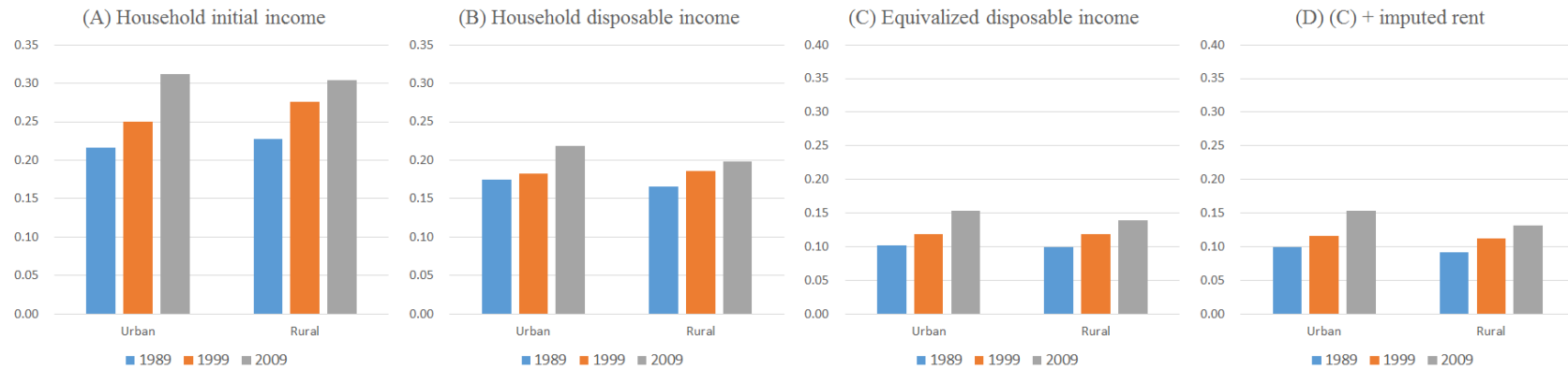


Figure 19(b): Relative poverty rate by area

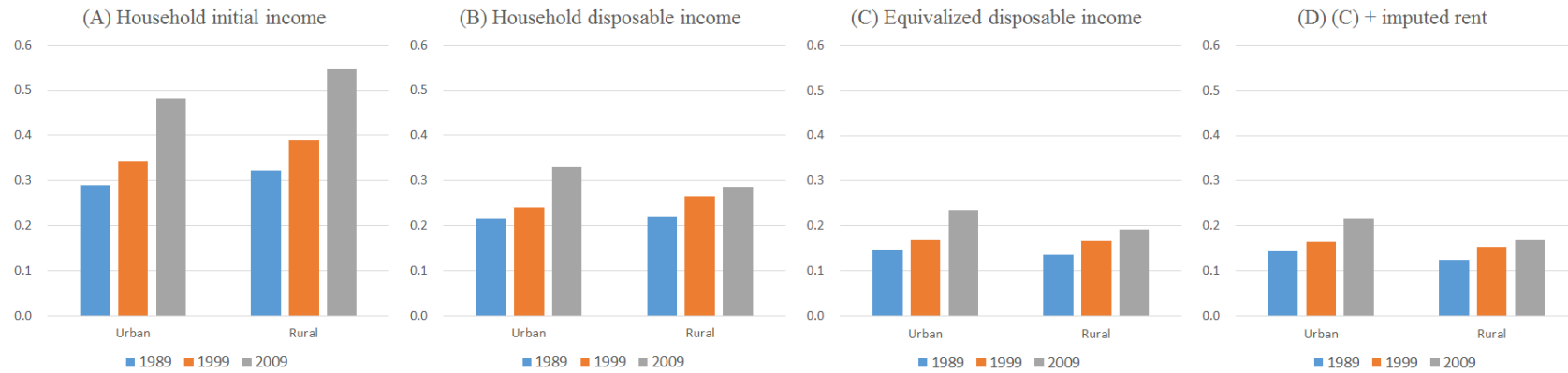


Figure 19(c): MLD by area

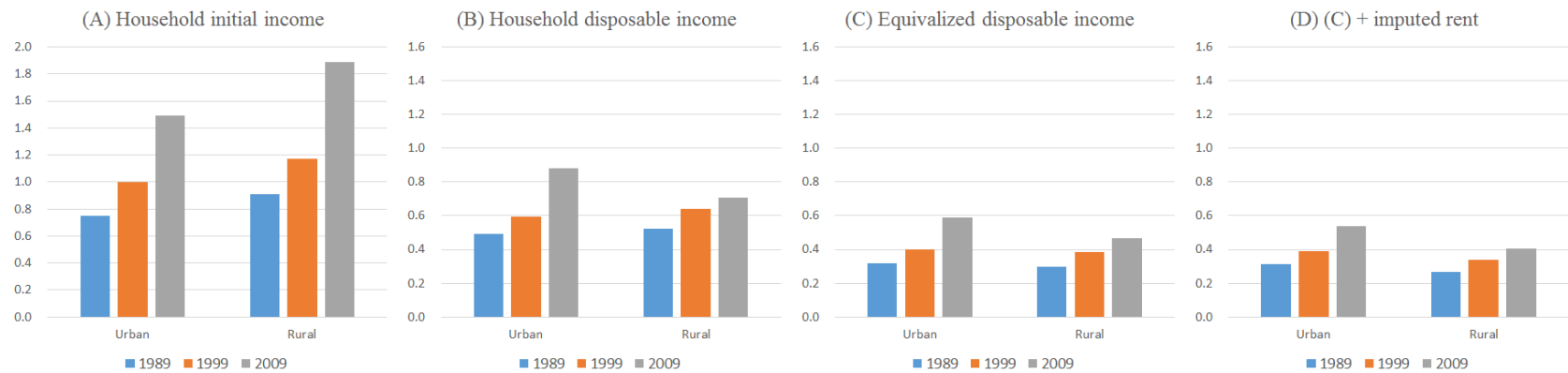


Figure 19(d): LV by area