

第1图 Garber, Alan, and Jonathan Skinner. (2008) Is American Health Care Uniquely Inefficient?

Figure 3

Health Care Production Functions: Shifting over Time

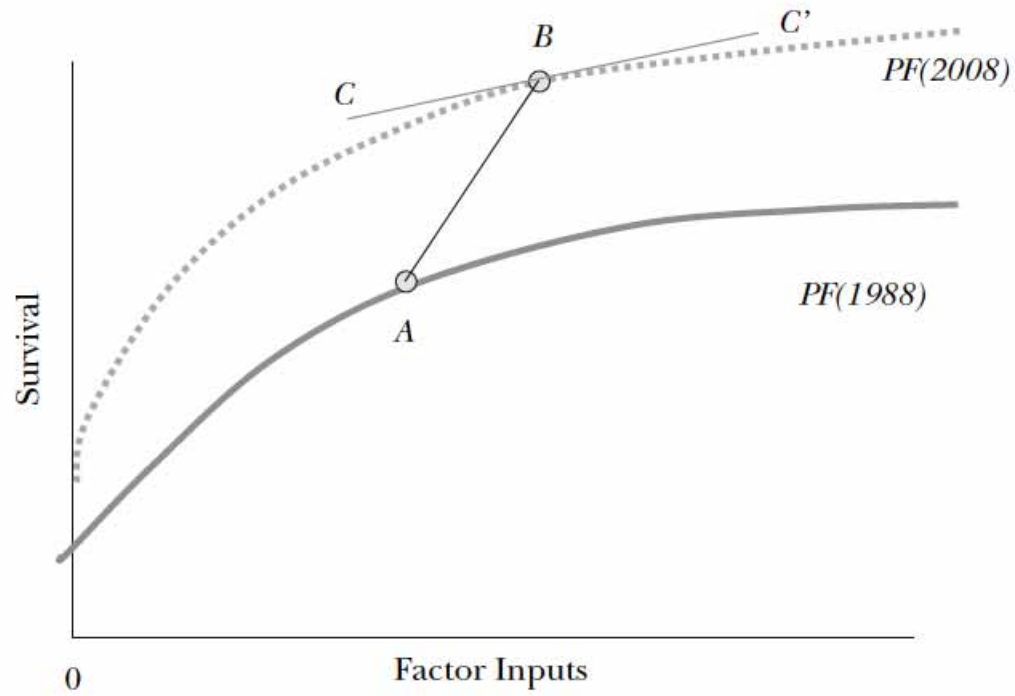


EXHIBIT 2

Adjusted One-Year Survival For Elderly Medicare Beneficiaries With An Acute Myocardial Infarction (AMI), 1984–2002

Percent surviving one year

70

65

60

55

1985

1990

1995

2000

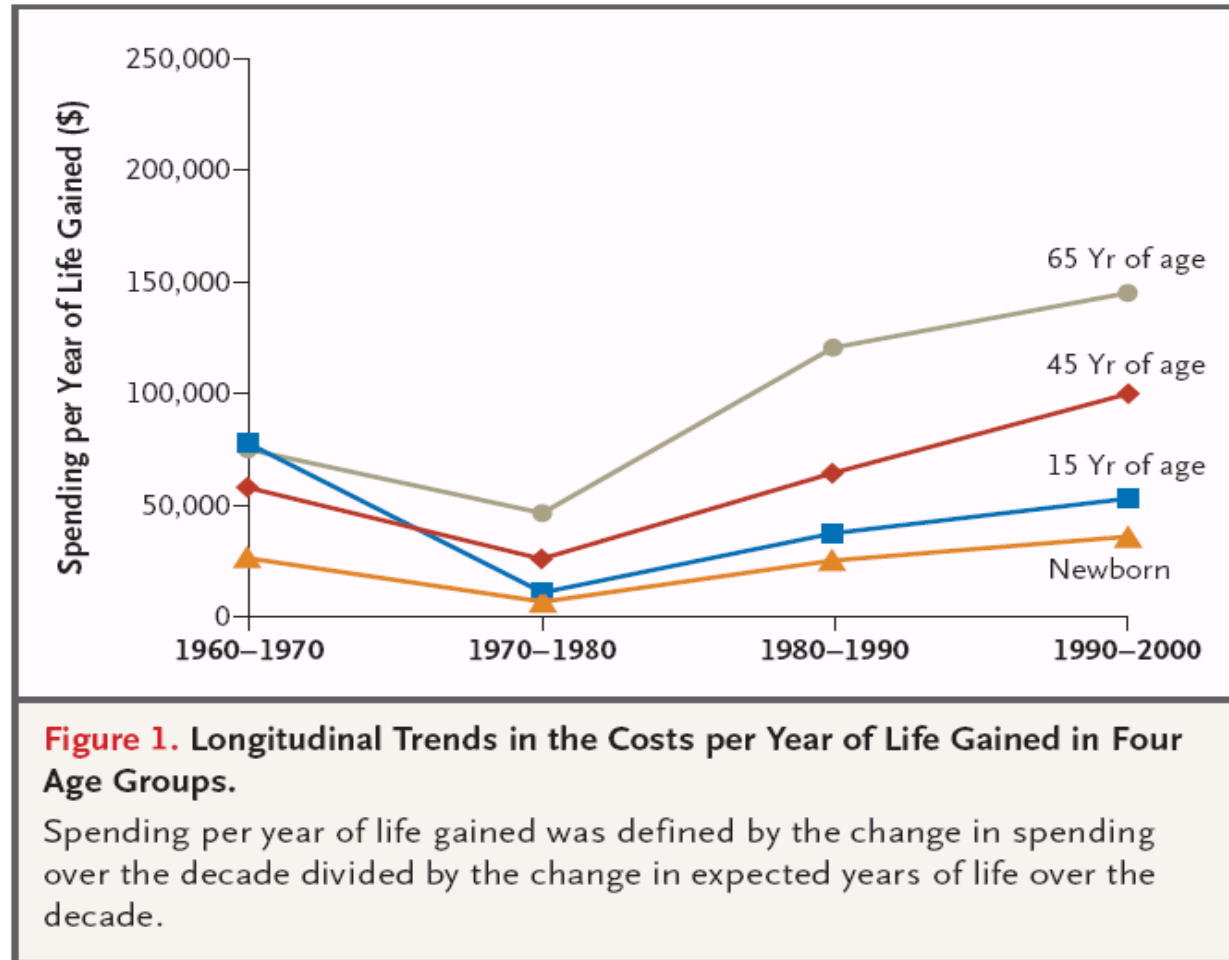
Cutler/McClellan

Skinner et al.

SOURCES: Data generating the dashed line (1984–1994) are from D.M. Cutler and M. McClellan, “Is Technological Change in Medicine Worth It?” *Health Affairs* 21, no. 5 (2001): 11–29. Data generating the solid line (1985–2002) are from the authors’ calculations using Medicare claims data.

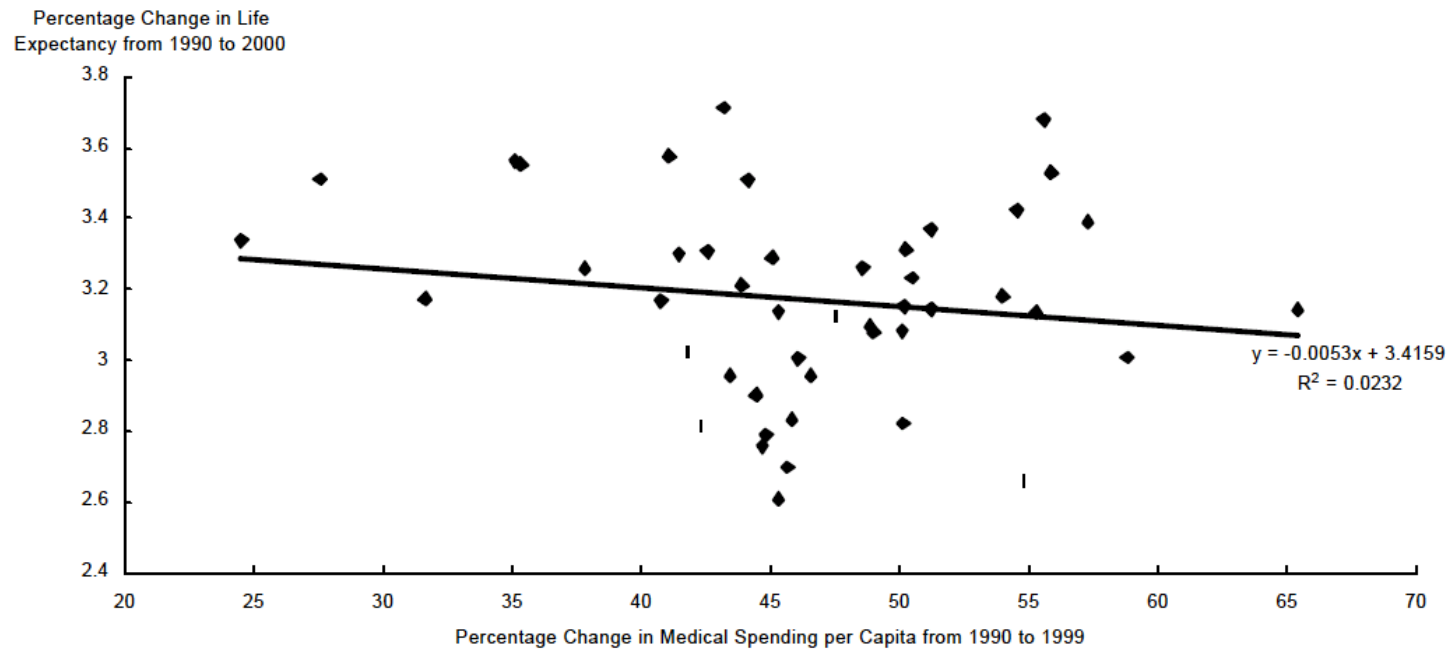
NOTE: The vertical axis measures the percentage of elderly Medicare beneficiaries who survive the index AMI; this is equal to 100 minus the percentage one-year mortality.

第3图 Cutler, David, Allison Rosen and Sandeep Vijan. (2006) The Value of Medical Spending in the U.S., 1960-2000.



第4図 Fukui, Tadashi and Yasushi Iwamoto. (2004) Medical Spending and the Health Outcome of the Japanese Population.

Figure 6(b): The Relation between Life Expectancy and Medical Spending per Capita
(Females at Birth)



第5图 Cutler, David, Mark McClellan, Joseph Newhouse and Dahlia Remler. (1998) Are Medical Prices Declining?

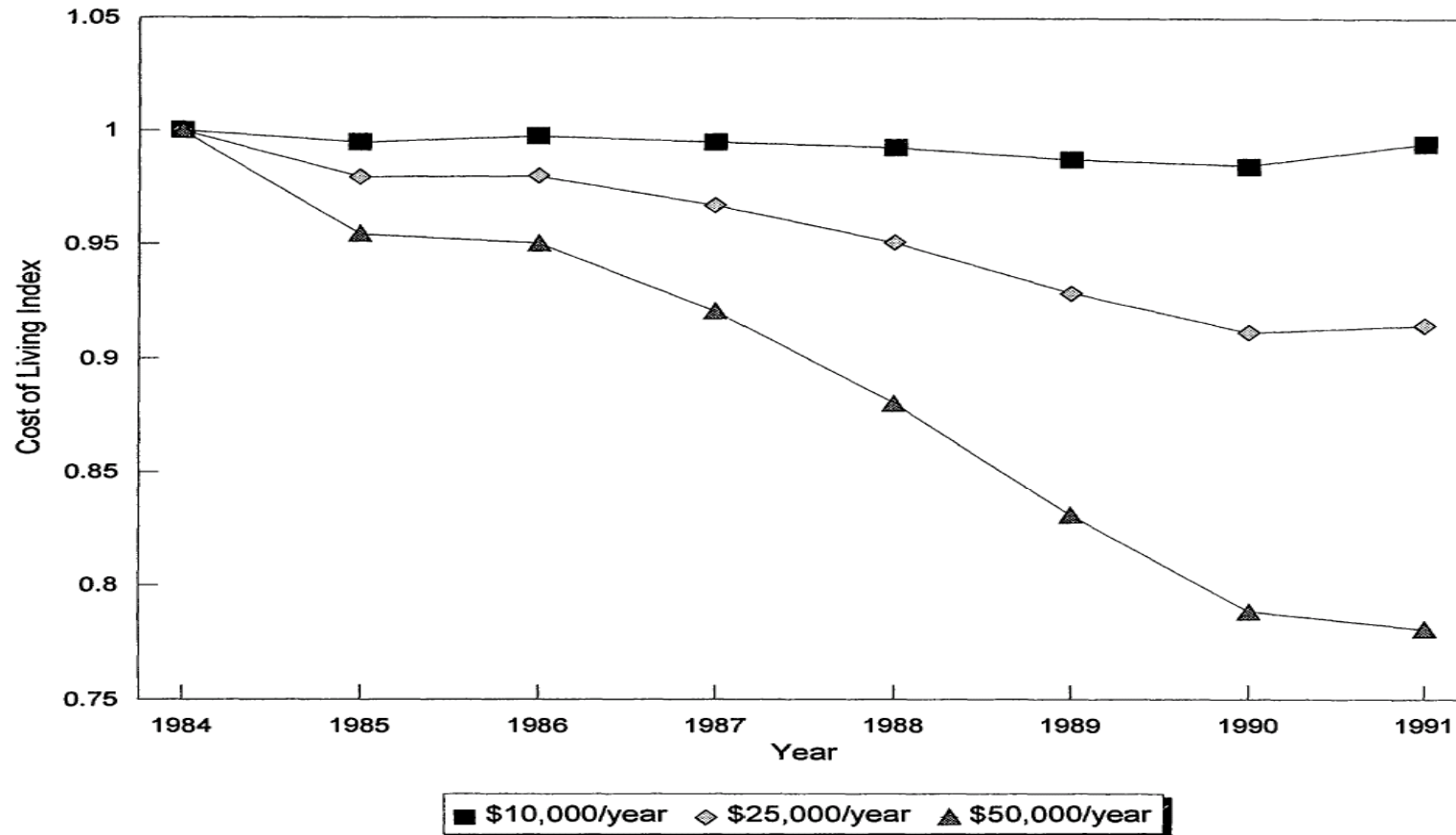


FIGURE V
Cost of Living Index
Index is normalized to 1 in 1984.