

# Measuring Advancement of Economy and Society: Economic Growth and Well-being

Justin Wolfers

Professor of Economics and Public Policy, University of Michigan

ESRI International Conference, Tokyo – July 31, 2025

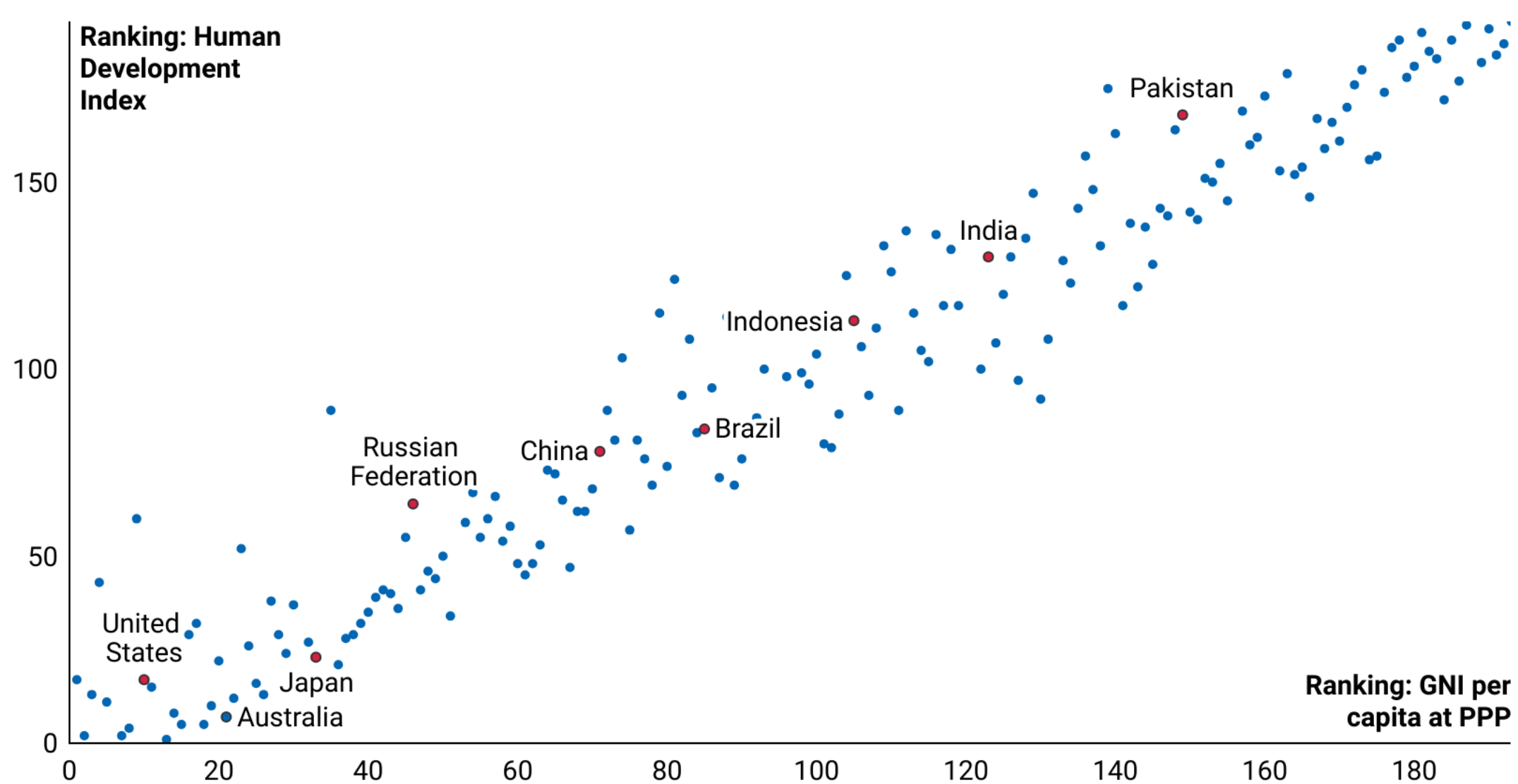
## Four claims

1. Alternative indicators of wellbeing are fun to think about  
...but rarely change policy advice
2. Real GDP per capita is closely related to subjective well-being
3. The world is getting happier  
...at the same rate you might expect given that it is growing
4. “Objective” data are somewhat subjective  
...and “subjective” data may be no less objective



# "Holistic" measures yield similar cross-national rankings to real GDP per capita

Correlation = 0.967

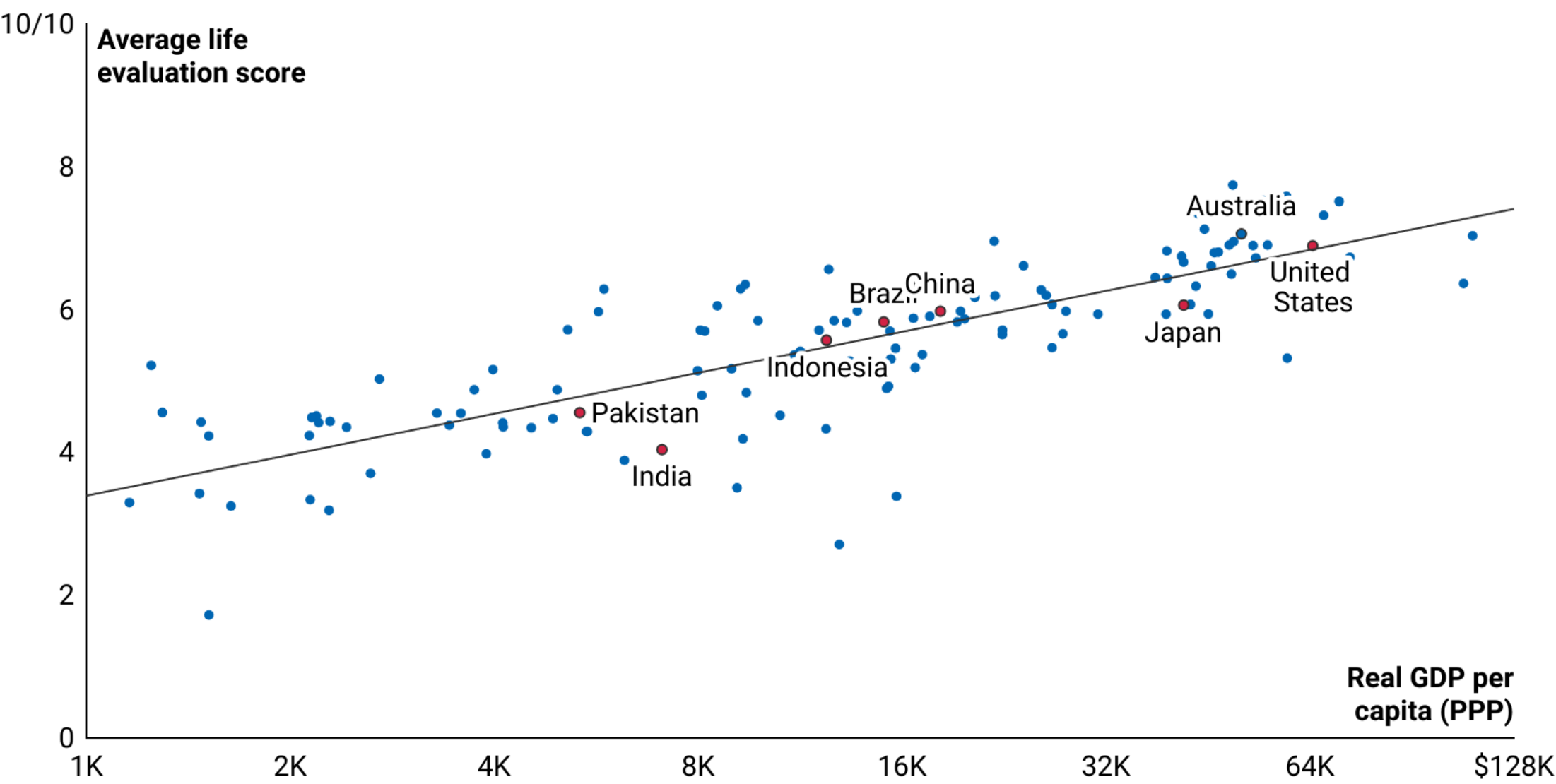


The Human Development Index (HDI) is a geometric mean of three sub-indices: 1. Health (measured by life expectancy at birth); 2. Education (years of schooling for adults aged 25+, and expected years of schooling for kids entering school); and 3. Gross national income per capita at PPP.

Chart: @JustinWolters • Source: UNDP Human Development Reports

# Subjective well-being scores are closely correlated with GDP per capita

Correlation = 0.81



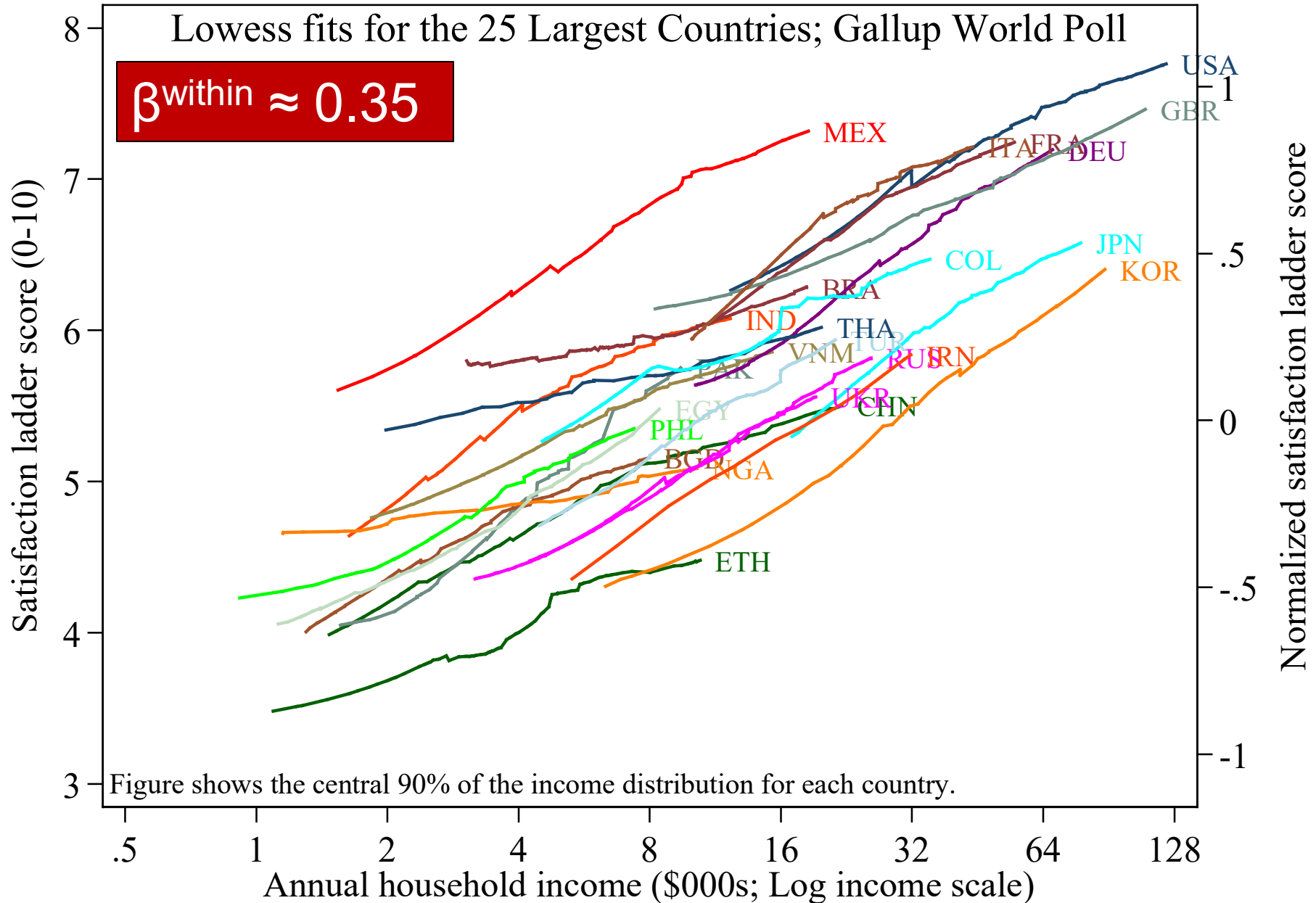
## Four claims

---

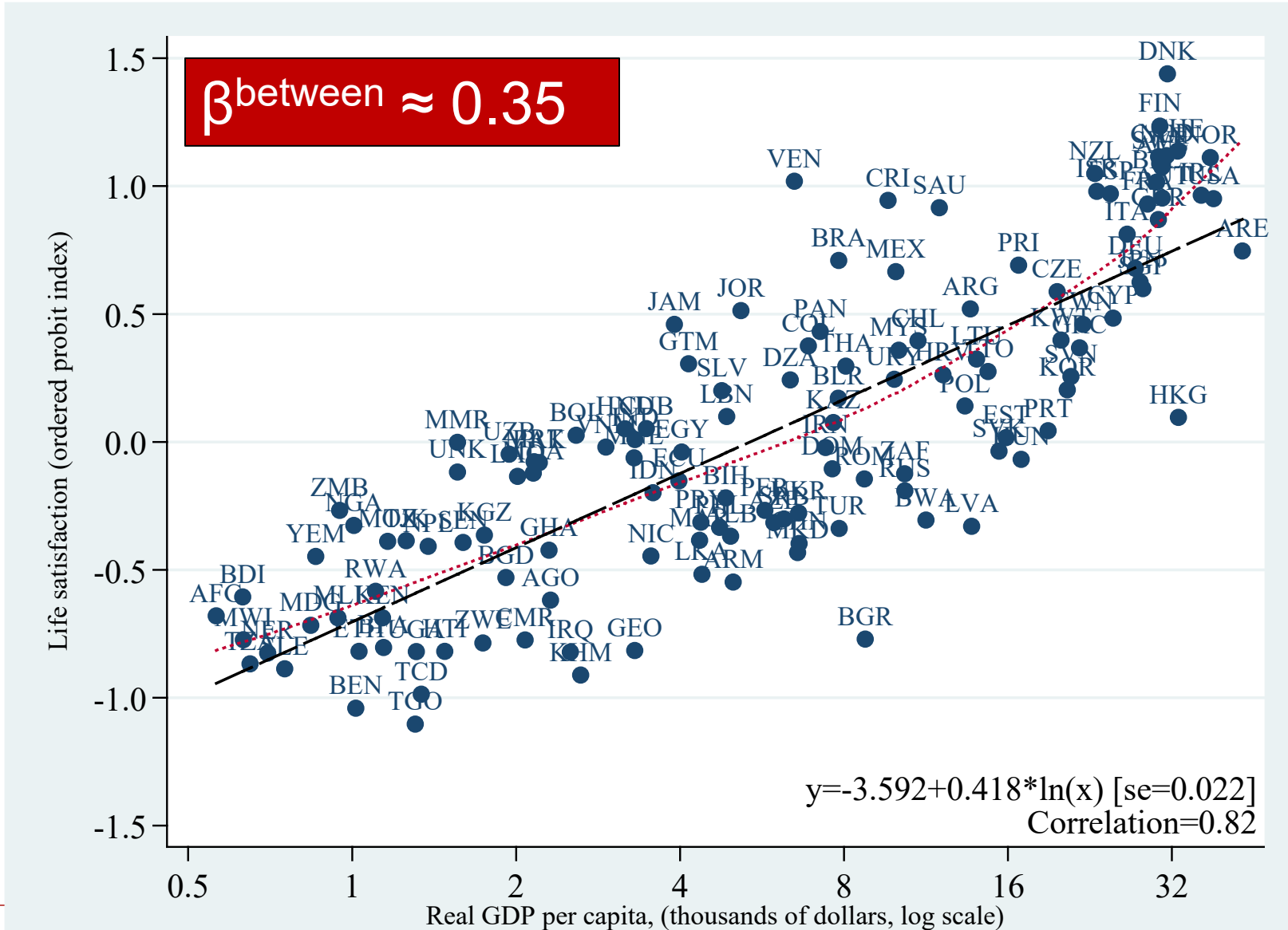
1. Alternative indicators of wellbeing are fun to think about  
...but rarely change policy advice
  2. Real GDP per capita is closely related to subjective well-being
  3. The world is getting happier  
...at the same rate you might expect given that it is growing
  4. “Objective” data are somewhat subjective  
...and “subjective” data may be no less objective
- 



## Satisfaction and Log(Family Income)



## Between Countries: Richer Countries are Happier



## Four claims

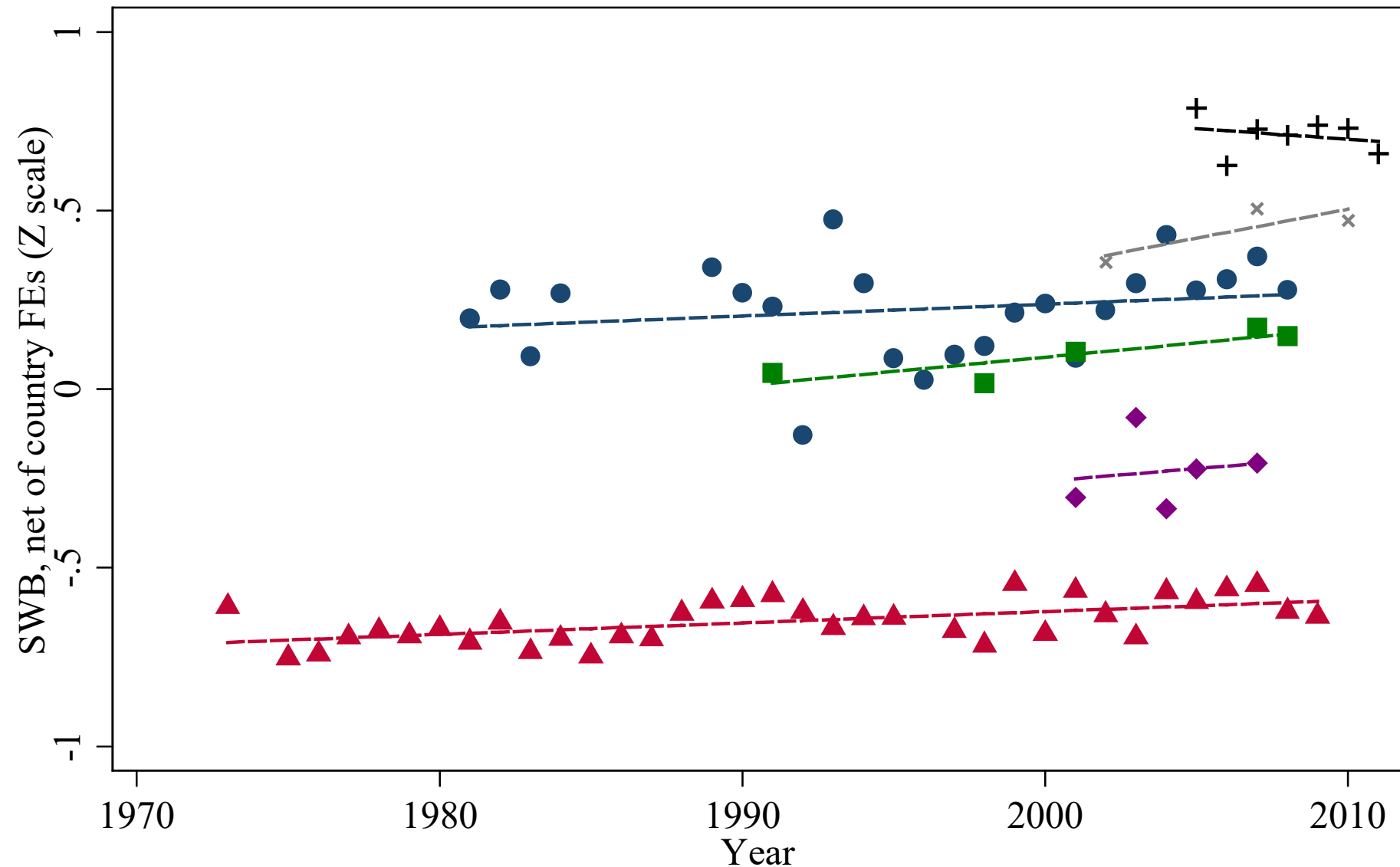
---

1. Alternative indicators of wellbeing are fun to think about  
...but rarely change policy advice
  2. Real GDP per capita is closely related to subjective well-being
  3. The world is getting happier  
...at the same rate you might expect given that it is growing
  4. “Objective” data are somewhat subjective  
...and “subjective” data may be no less objective
- 



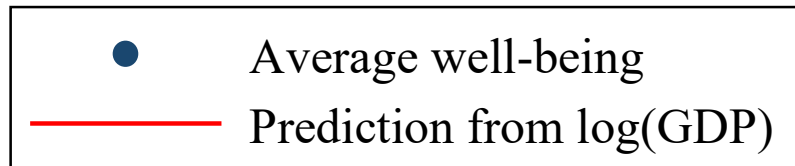
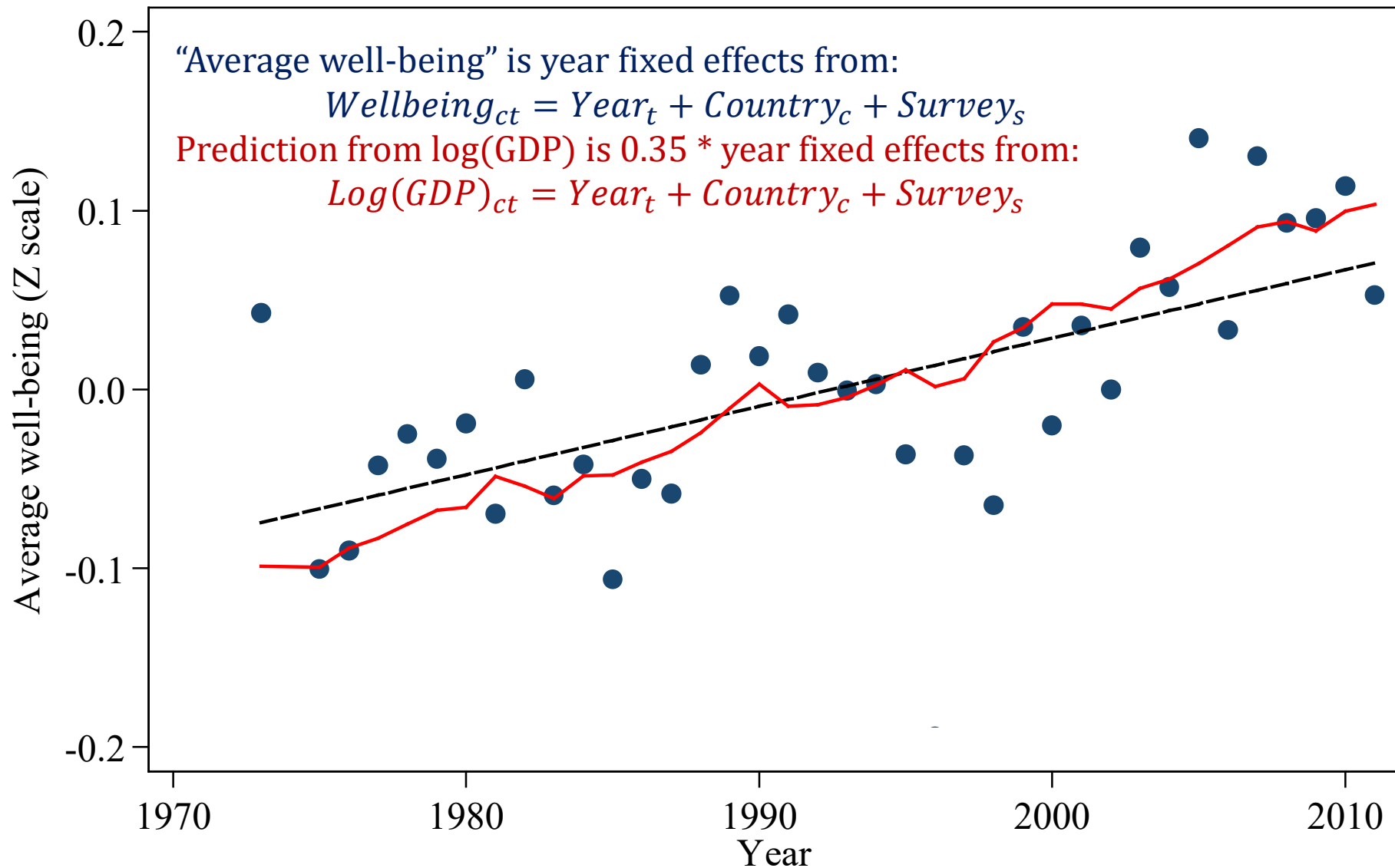


# Life satisfaction has increased over time



+ Gallup   ● WVS   × Pew   ▲ Eurobarometer   ◆ Latinbarometer   ■ ISSP

asdf



## Four claims

---

1. Alternative indicators of wellbeing are fun to think about  
...but rarely change policy advice
2. Real GDP per capita is closely related to subjective well-being
3. The world is getting happier  
...at the same rate you might expect given that it is growing
4. “Objective” data are somewhat subjective  
...and “subjective” data may be no less objective



# Subjective versus Objective measures

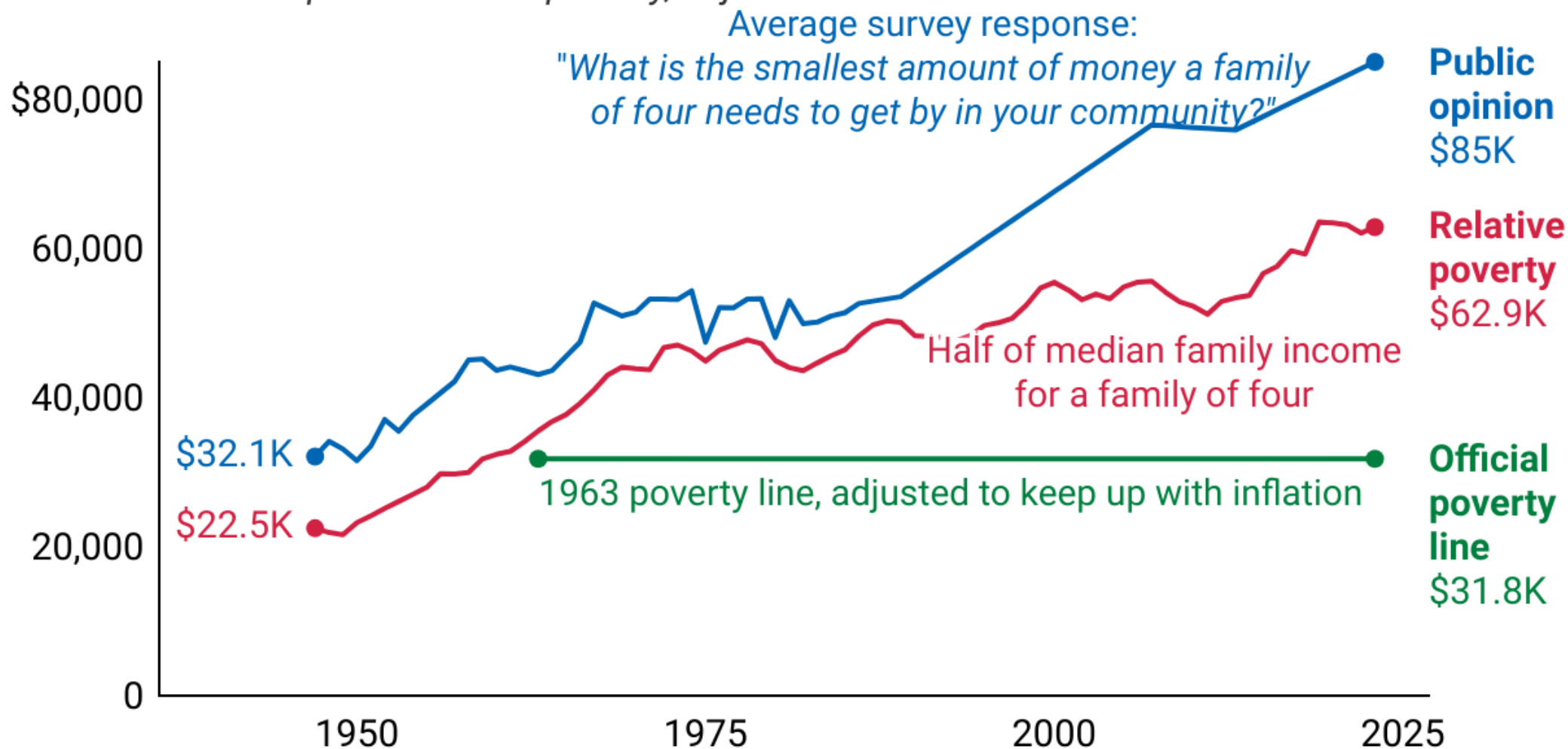
Are these **objective** measures?  
Or are they **subjective**?

- ❑ Unemployment rate
  - ▶ What does it mean to actively search for work?
  - ▶ Are students working?
- ❑ Income
  - ▶ Which resources to include?
- ❑ Real GDP
  - ▶ How to compare people whose consumption baskets barely overlap?
- ❑ Poverty rate
  - ▶ What does it mean to be “in poverty”?



# Different approaches to measuring poverty yield different poverty lines

Annual income required to avoid poverty, adjusted for inflation



## Four claims

---

1. Alternative indicators of wellbeing are fun to think about  
...but rarely change policy advice
  2. Real GDP per capita is closely related to subjective well-being
  3. The world is getting happier  
...at the same rate you might expect given that it is growing
  4. “Objective” data are somewhat subjective  
...and “subjective” data may be no less objective
- 

