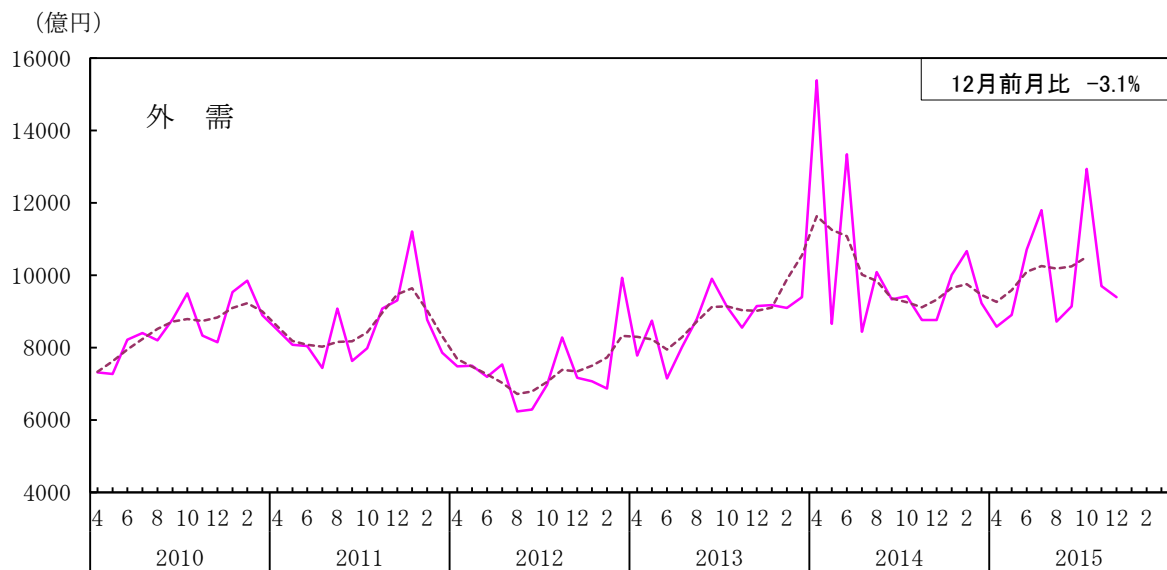
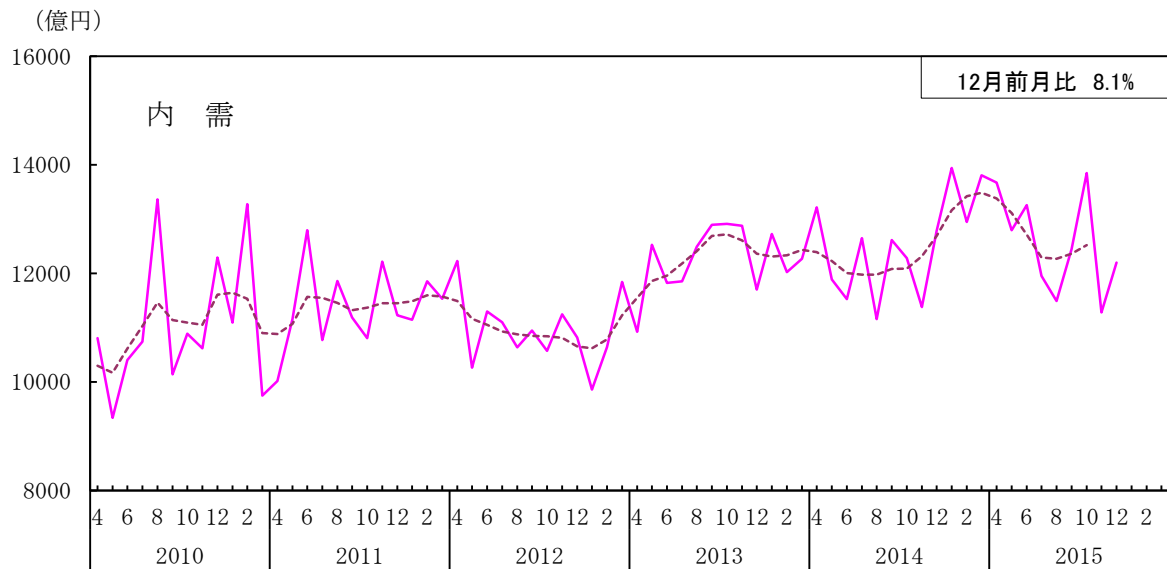
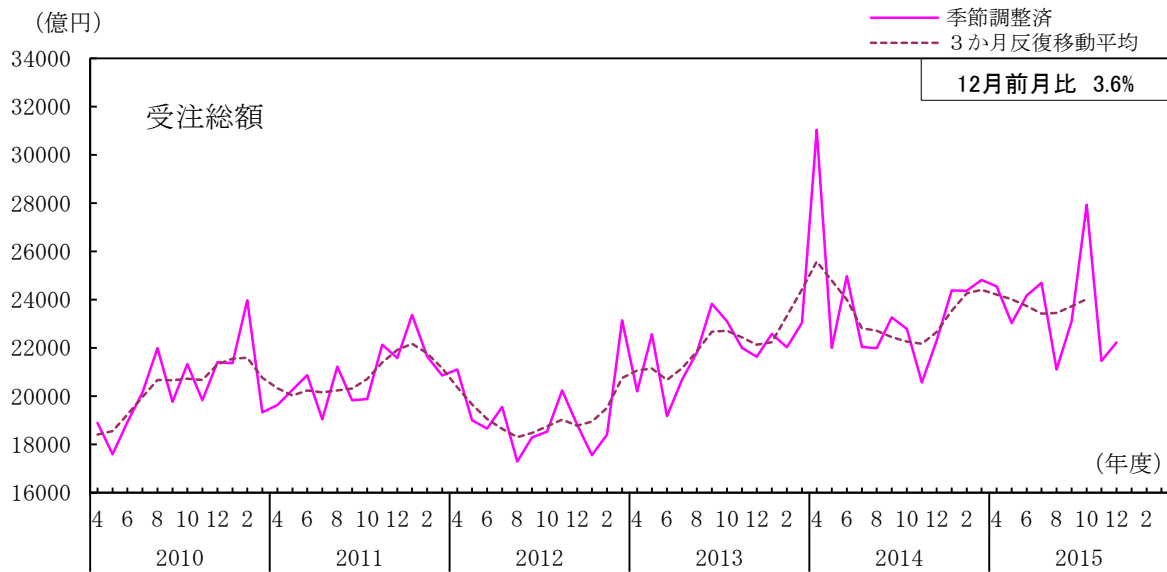
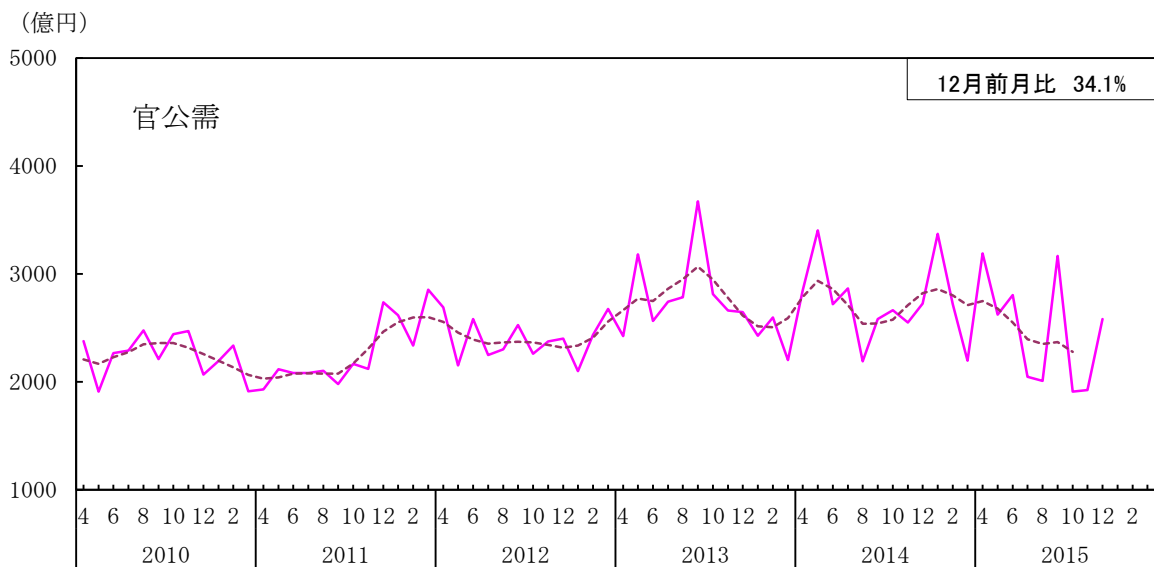
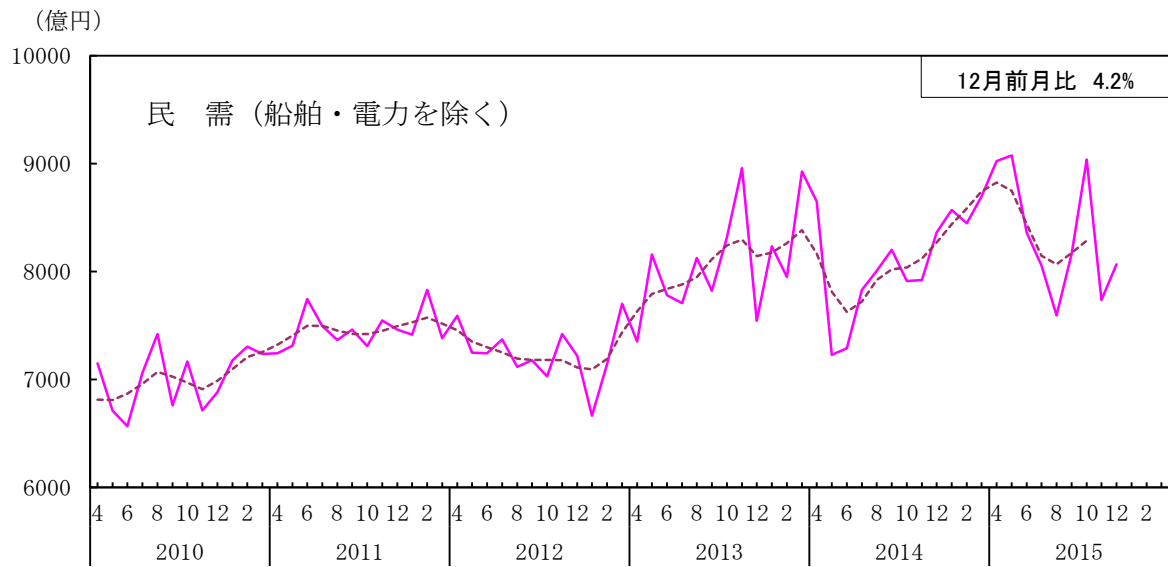
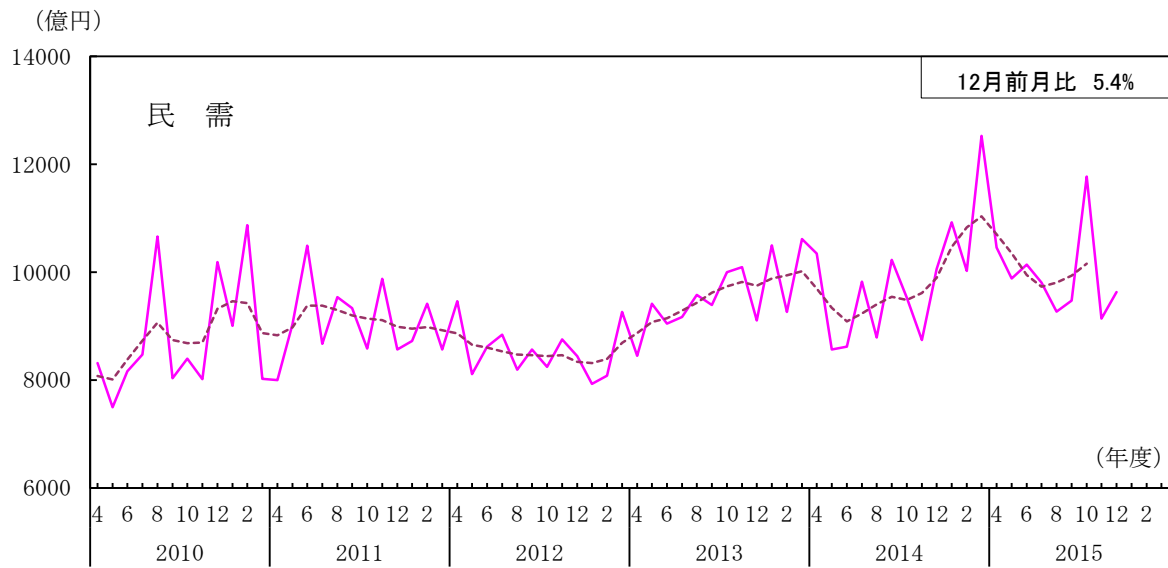


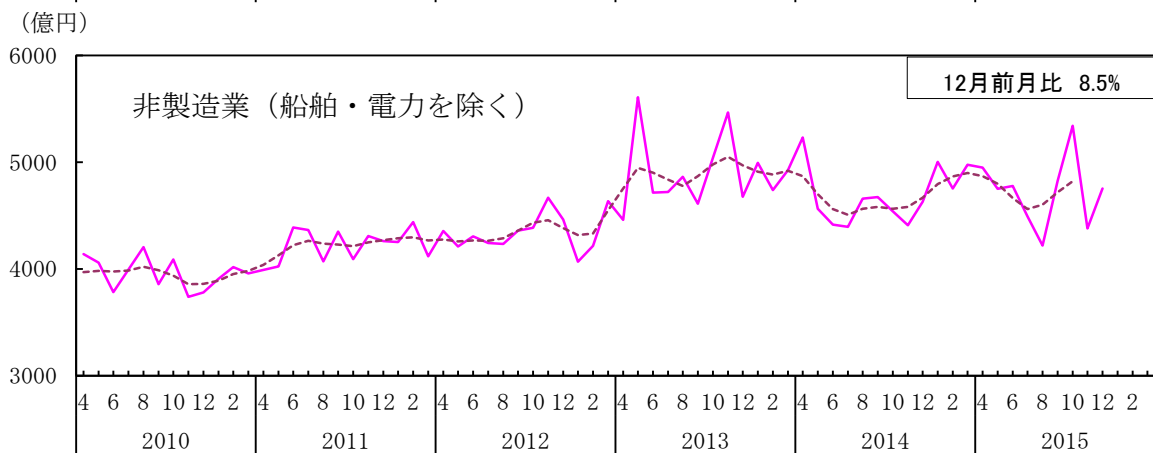
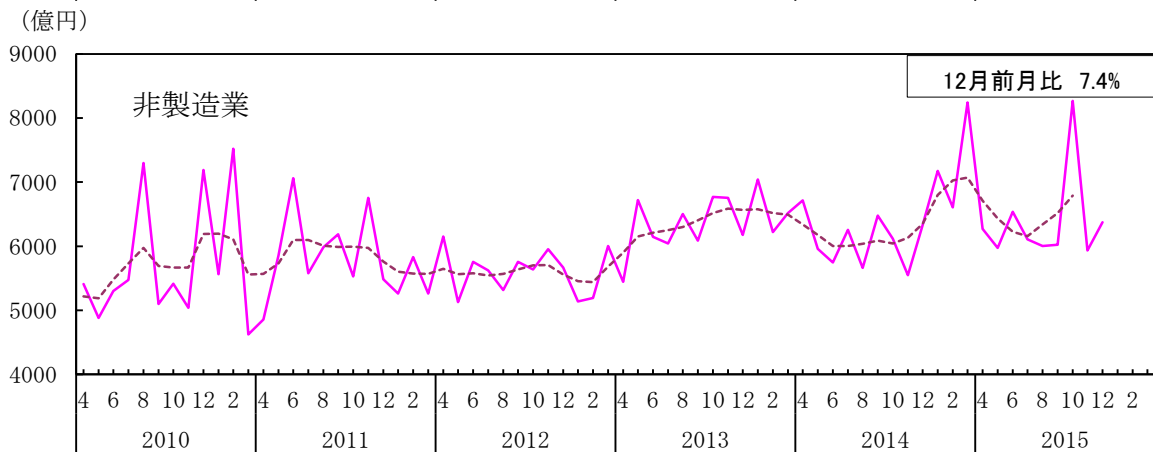
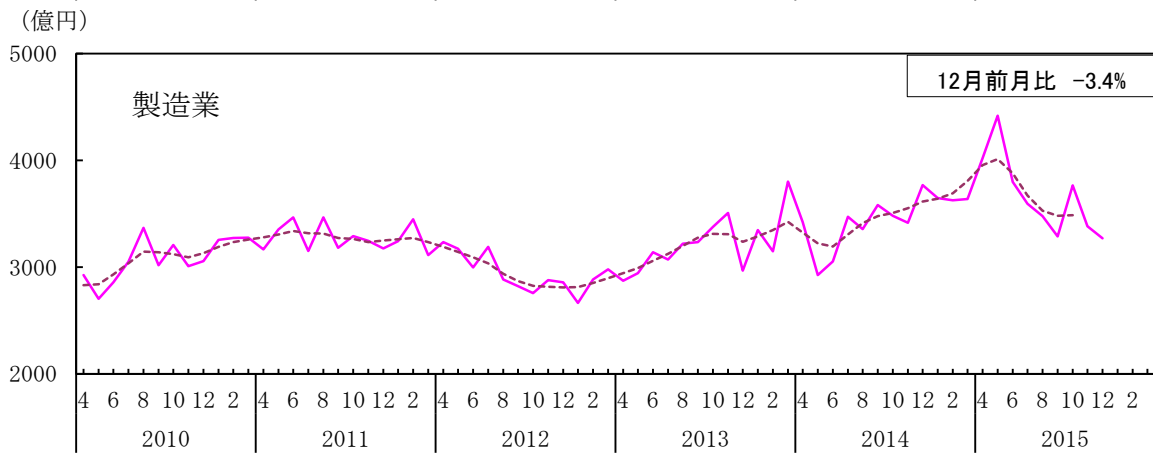
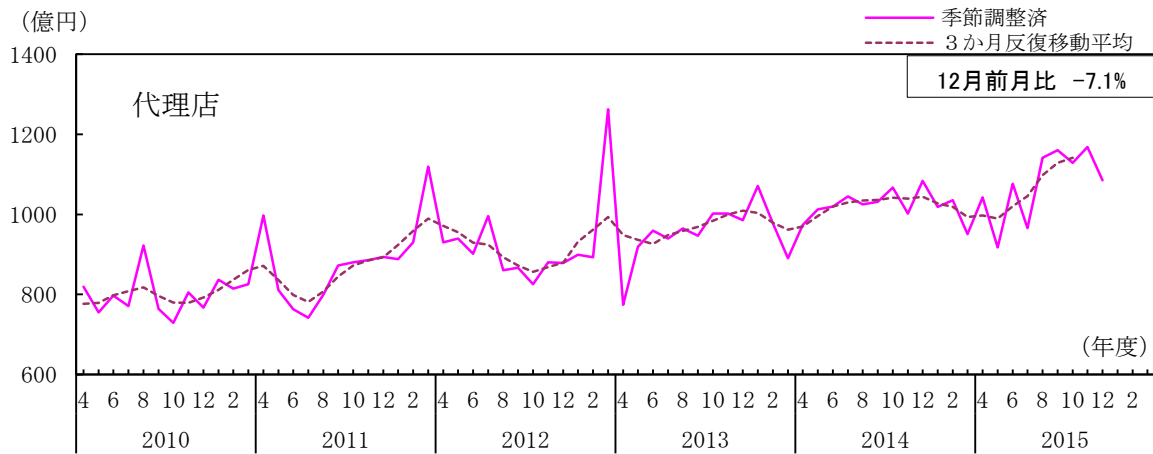
第1図 主要需要者別受注額



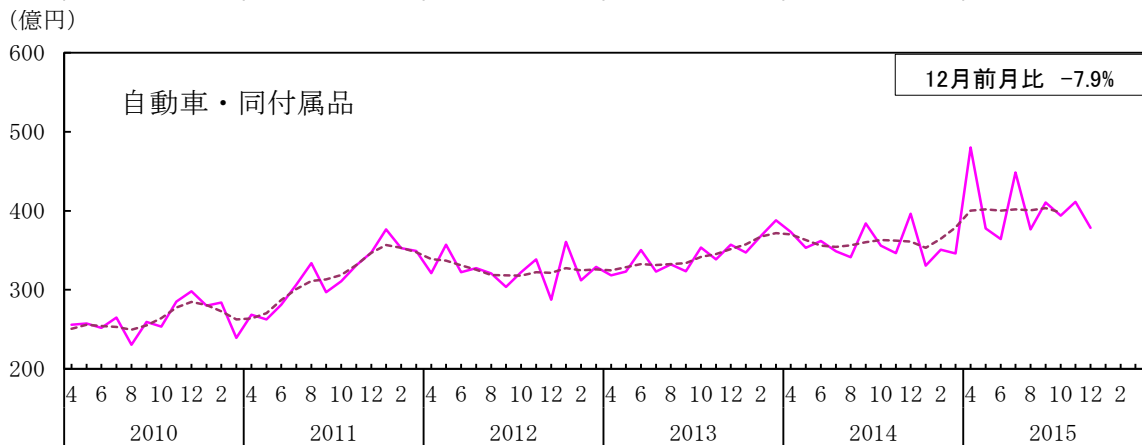
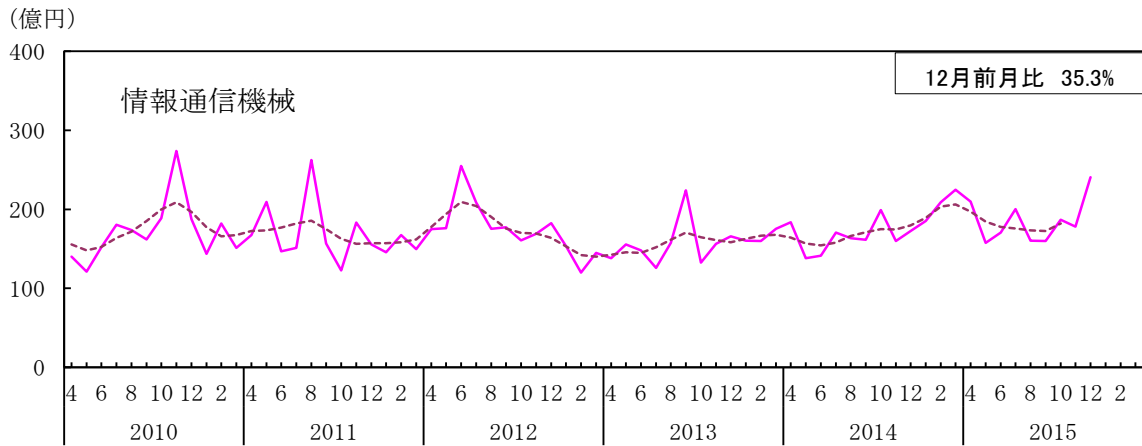
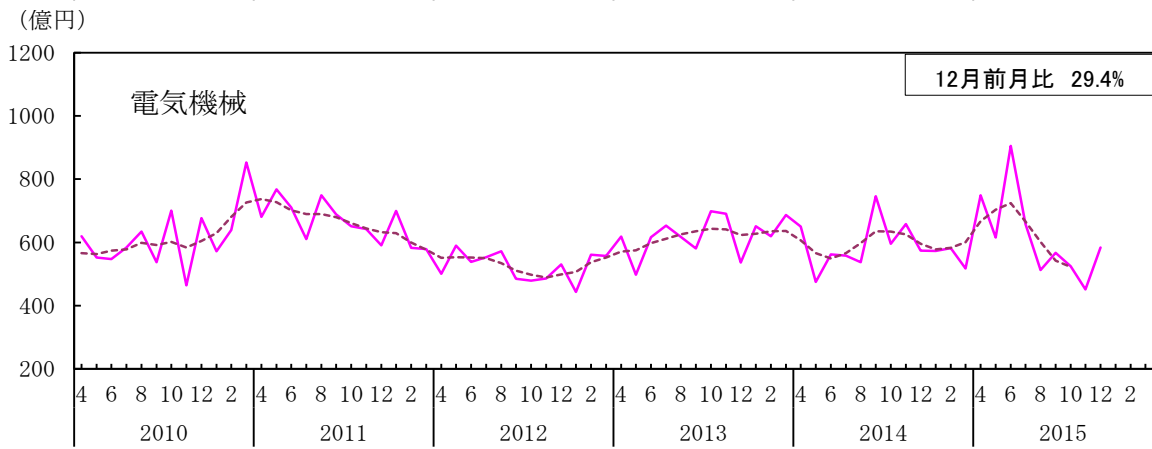
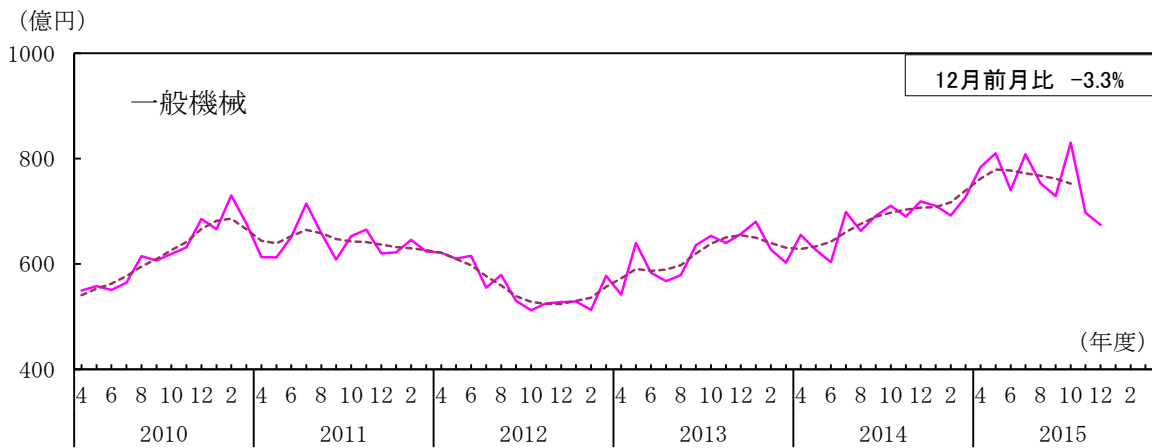
(備考) 3か月反復移動平均は、ある月の3か月後方移動平均と、それをひと月分及びふた月分後方にずらした3か月後方移動平均の3つの平均値を、さらに平均して算出（例えば5月の3か月反復移動平均は、1～3月の平均値、2～4月の平均値、3～5月の平均値を3で割った数値）。



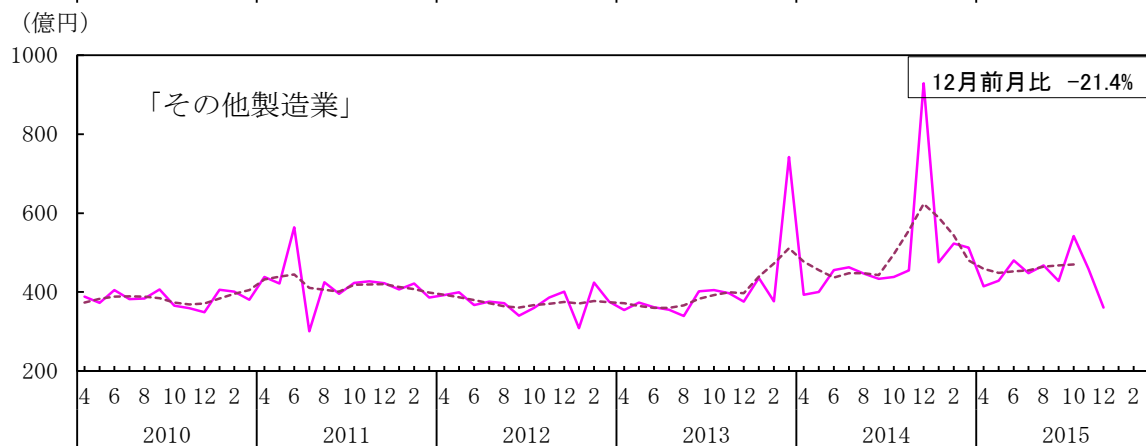
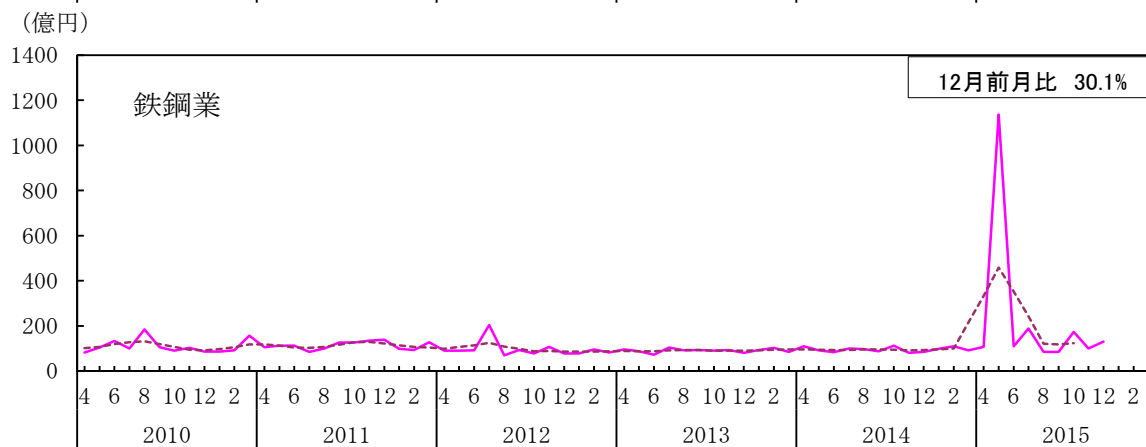
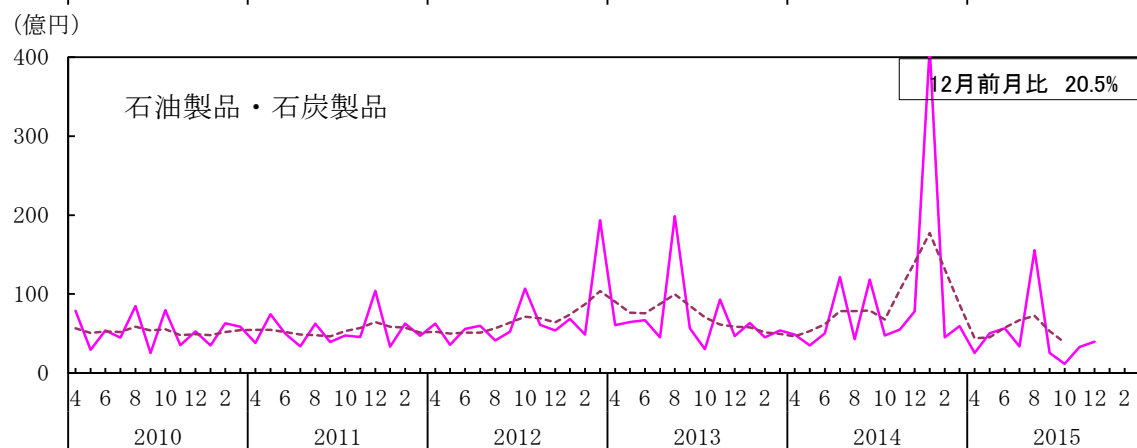
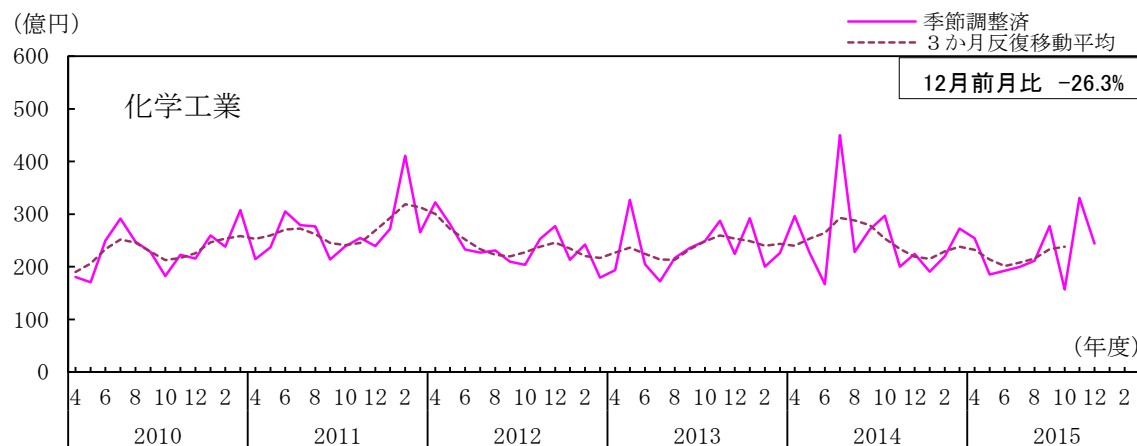
第1図 主要需要者別受注額（つづき）

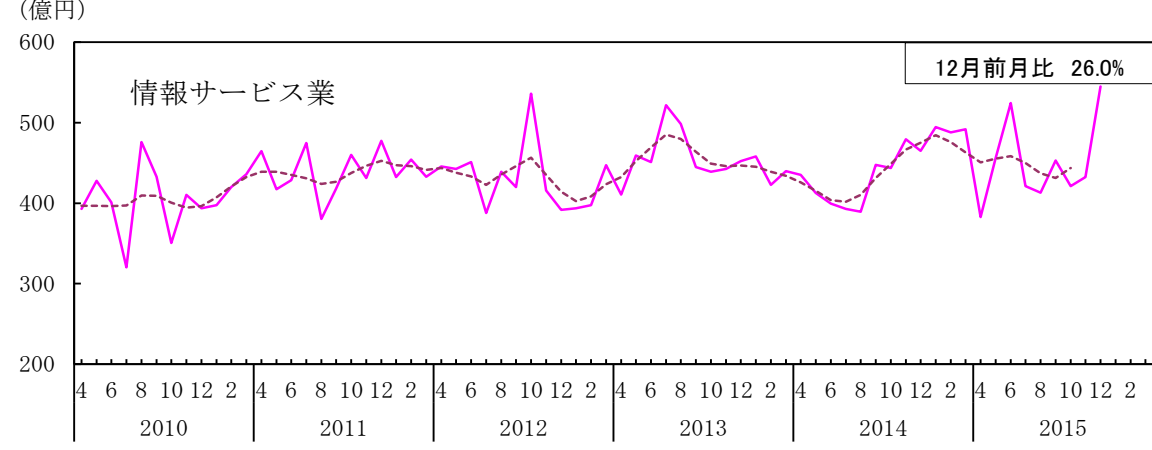
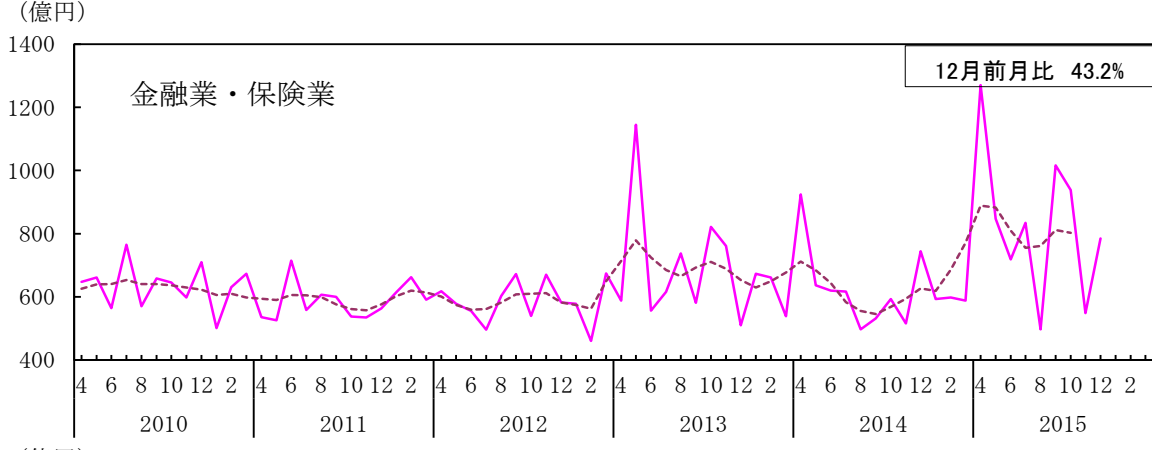
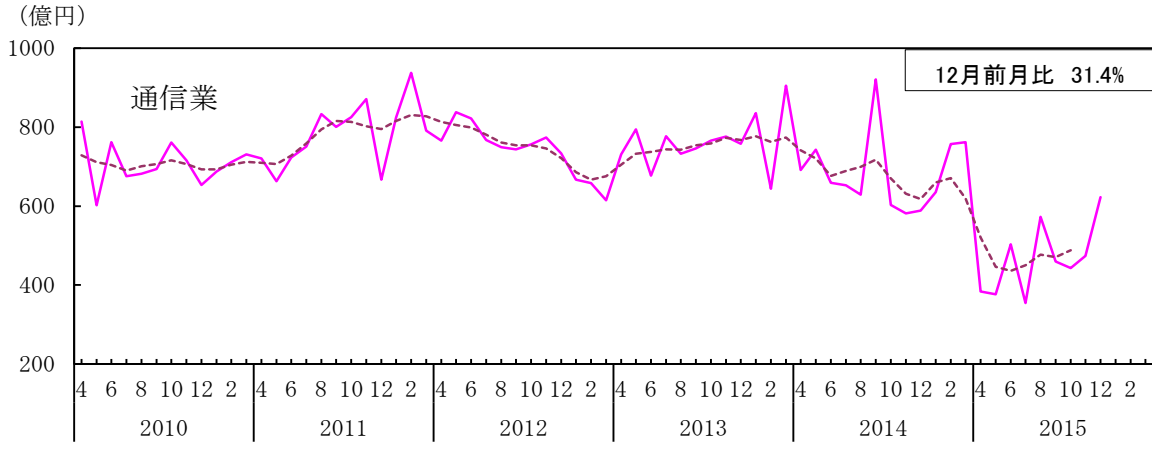
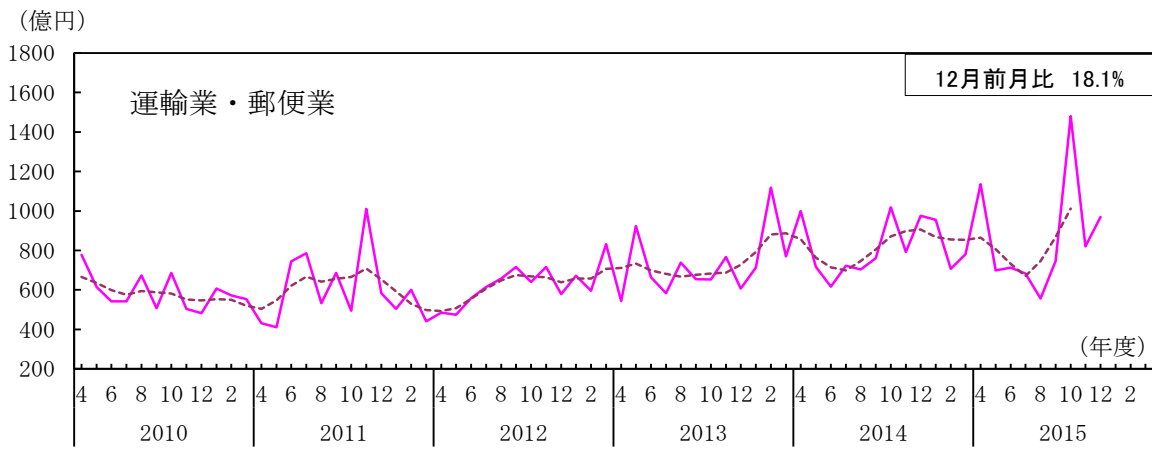


第2図 主要業種別受注額

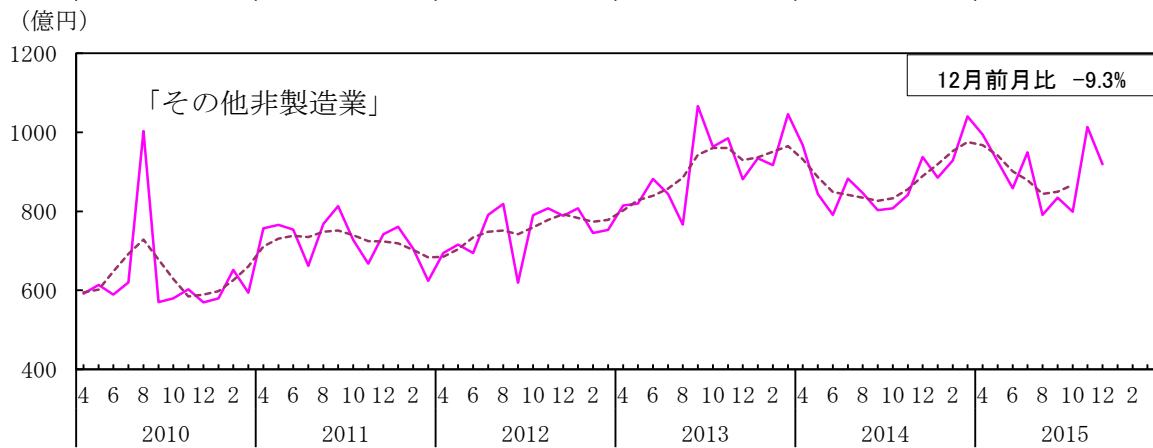
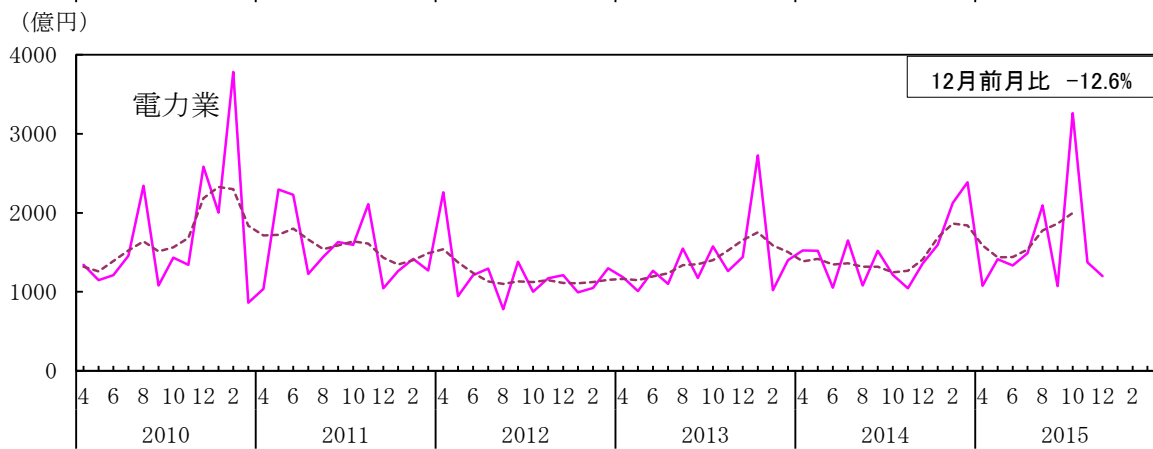
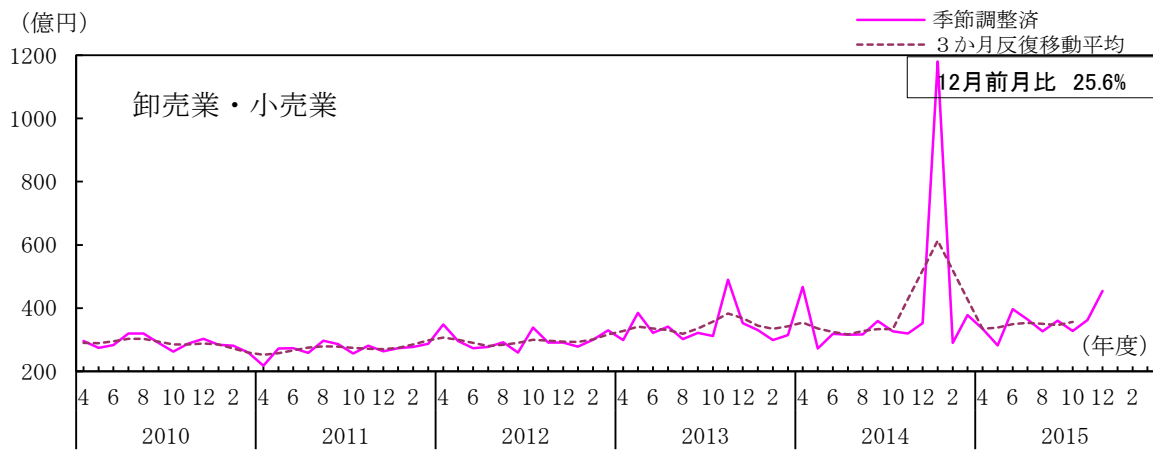


第2図 主要業種別受注額（つづき）





第2図 主要業種別受注額（つづき）



第3図 主要機種別受注額（民需、前年同月比）

